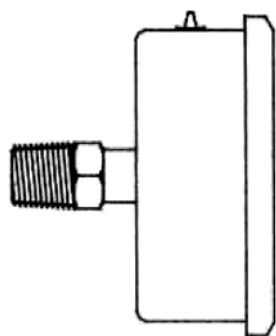


## MANOMETRES

## PRESSURE GAUGES

Prise arrière  
Back connection  
**PA**



Bain de glycérine

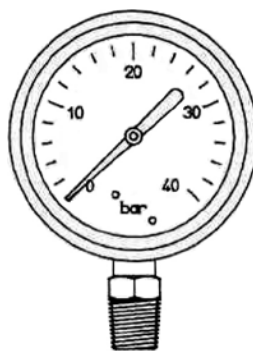
Boîtier : Inox

Raccordement : mâle 1/4"  
ou 1/2" NPT

Diamètre : 63 ou 100 mm (autres sur demande)

Echelles : 0-4 Bar, 0-10 Bar, 0-16 Bar, 0-25 Bar, 0-40 Bar, 0-60 Bar (autres sur demande)

Prise verticale  
Vertical connection  
**PV**



Body : Stainless steel

Connections : mâle 1/4"  
ou 1/2" NPT

Diameter : 63 or 100 mm (other on request)

Ranges : 0-4 Bar, 0-10 Bar, 0-16 Bar, 0-25 Bar, 0-40 Bar, 0-60 Bar (other on request)



| REFERENCE NUMBER | Ø mm   | PRISE TYPE CONNECTION | CONNECTION RACCORDEMENT NPT | ECHELLE BAR | CONSTRUCTION *         |
|------------------|--------|-----------------------|-----------------------------|-------------|------------------------|
| 4V663            | 63     | PV                    | 1/4"                        | 0 - 4       | INOX LAITON / SS BRASS |
| 10V663           |        |                       |                             | 0 - 10      |                        |
| 10A663           |        |                       |                             | 0 - 16      |                        |
| 16V663           |        |                       |                             | 0 - 25      |                        |
| 16A663           |        |                       |                             | 0 - 40      |                        |
| 25V663           |        |                       |                             | 0 - 60      |                        |
| 25A663           |        |                       |                             | 0 - 16      |                        |
| 40V663           |        |                       |                             | 0 - 25      |                        |
| 40A663           |        |                       |                             | 0 - 40      |                        |
| 60V663           |        |                       |                             | 0 - 60      |                        |
| 60A663           |        |                       |                             | 0 - 16      |                        |
| 16V15100         |        |                       |                             | 100         |                        |
| 25V15100         | 0 - 40 |                       |                             |             |                        |
| 40V15100         |        |                       |                             |             |                        |

\* : Existe en version tout inox.  
Ajouter "I" à la référence choisie

\* : For all stainless steel construction.  
Add "I" to the chosen reference number

**MANOMETRE ETALONNES RACCORDES COFRAC CALIBRATED PRESURE GAUGES**

| REFERENCE NUMBER | Ø mm | PRISE TYPE CONNECTION | CONNECTION RACCORDEMENT NPT | ECHELLE BAR | CONSTRUCTION    |
|------------------|------|-----------------------|-----------------------------|-------------|-----------------|
| 25V663I-E        | 63   | PV                    | 1/4"                        | 0 - 25      | STAINLESS STEEL |
| 25A663I-E        |      | PA                    |                             |             |                 |

**MANOMETRE ETALONNES COFRAC \* COFRAC CALIBRATED PRESURE GAUGES \***

| REFERENCE NUMBER | Ø mm | PRISE TYPE CONNECTION | CONNECTION RACCORDEMENT NPT | ECHELLE BAR | CONSTRUCTION    |
|------------------|------|-----------------------|-----------------------------|-------------|-----------------|
| 25V663ICO        | 63   | PV                    | 1/4"                        | 0 - 25      | STAINLESS STEEL |
| 25A663ICO        |      | PA                    |                             |             |                 |

\* : Nous consulter.

\* : On request.

## THERMOMETRES

## THERMOMETERS

**Série PH7250, PV7250 :**

Thermomètres à cadrans pour réservoirs avec gaines.

Longueur : 250 mm

- 30 + 50 °C

Prise horizontale ou verticale

Cadran Ø 80



Doigt de gant pour PH7250, PV7250.  
Raccordement : 1/2" NPT

**PH7250, PV7250 series :**

Dial thermometers for containers.

Length: 250 mm

- 30 + 50 °C

Back or vertical connection

Dial Ø 80



Sheath for PH7250, PV7250 series.  
Connections : 1/2" NPT

**Série TH, TR, TRX :**

Thermomètres à cadrans pour tuyauteries.

-30 +30°C, PA 1/8" L = 100 (TH)

-30 +70°C, PA 1/4" L = 60 (TR)

-30 +50°C, PA L = 60 (TRX)

**TH, TR, TRX series :**

Dial Thermometers for pipes.

-30 +30°C, PA 1/8" L = 100 (TH)

-30 +70°C, PA 1/4" L = 60 (TR)

-30 +50°C, PA L = 60 (TRX)



Doigt de gant pour thermomètre TRX  
Raccordement : 1/2" NPT

Sheath for TRX thermometer  
Connections : 1/2" NPT



## THERMOMETRES

## THERMOMETERS

**Série TV, TVC, TVCO :**

Thermomètres en verre pour compteurs.

Longueur : 240 mm  
- 30 + 70 °C

**TV, TVC, TVCO series :**

Glass thermometers for meters.

Length : 240 mm  
- 30 + 70 °C



| DESIGNATION                     | REFERENCE NUMBER | DESCRIPTION                             |
|---------------------------------|------------------|---|
| -30 +50 °C PH 1/2" L=250        | PH7250           | -30 +50°C BACK CONNECTION 1/2 L=250     |
| -30 +50 °C PV 1/2" L=250        | PV7250           | -30 +50°C BACK CONNECTION 1/2 L=250     |
| DOIGT DE GANT PH7250 PV7250     | DG7250           | SHEATH FOR PH7250 PV7250                |
| -30 +30 °C PA 1/8" L=100        | TH               | -30 +30°C BACK CONNECTION 1/8 L=100     |
| -30 +50 °C PA 1/4" L=60         | TRX              | -30 +50°C BACK CONNECTION 1/2 L=60      |
| DOIGT DE GANT POUR TRX          | DGTRX            | SHEATH FOR TRX                          |
| -30 +70 °C PA 1/4" L=60         | TR               | -30 +70°C BACK CONNECTION 1/2 L=60      |
| -30 + 70°C L=240                | TV               | -30 + 70°C L=240                        |
| -30 +70°C L=240 CONTRÔLE        | TVC              | -30 +70°C L=240 WITH CERTIFICATE        |
| -30 +70°C L=240 CONTRÔLE COFRAC | TVCO             | -30 +70°C L=240 WITH COFRAC CERTIFICATE |