

# FILLING HEADS



## 1-GENERAL DEFINITION

DM Series filling heads are made of corrosion-resistant materials such as stainless steel, brass, aluminum and special polymers.

Filling tips of the DM series Filling Heads are made of brass metal and suitable for ex-proof standards.

Balanced calibrate for easy suspension between filling operations.

Impermeability material suitable for LPG gas provides many long years of services for the DM series filling heads.

### PRODUCT CODING SYSTEM:

**Product Code:** DM-FHX-XXX

DM: Abbreviation of Company Name

FHC: FILLING HEAD TYPE CAMPING

FHJC: FILLING HEAD TYPE JAW CLUTCH

FHFV: FILLING HEAD TYPE F VALVE

FHA: FILLING HEAD TYPE AUTOMATIC

FHB: FILLING HEAD TYPE BRASIL

FHP: FILLING HEAD TYPE PISTON

FHF: FILLING HEAD TYPE FLANGED

FHJ: FILLING HEAD TYPE JUMBO

FHM: FILLING HEAD TYPE MECHANIC

FHI: FILLING HEAD TYPE KEYED FLANGED-ITALIAN

FHV: FILLING HEAD TYPE VALVE

XXX

012: 1/2"

038: 3/8"

014: 1/4"

815: M18 x 1,5

## 2-FILLING HEADS TYPE



FILLING HEAD TYPE CAMPING

PRODUCT CODE: DM-FHC-xxx



FILLING HEAD TYPE F VALVE

PRODUCT CODE: DM-FHFV-xxx



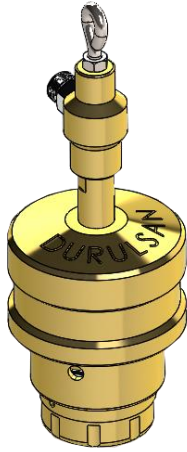
FILLING HEAD TYPE AUTOMATIC

PRODUCT CODE: DM-FHA-xxx

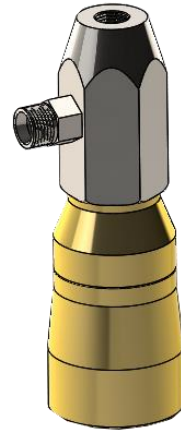


FILLING HEAD TYPE  
KEYED FLANGED

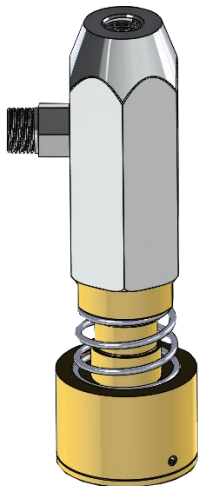
PRODUCT CODE: DM-FHI



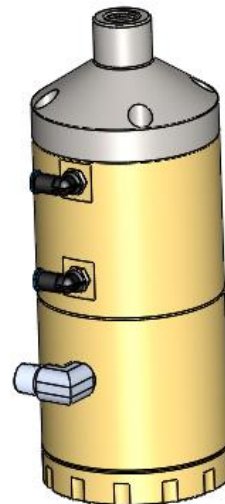
FILLING HEAD TYPE FLANGED  
PRODUCT CODE: DM-FHF-xxx



FILLING HEAD TYPE PISTON  
PRODUCT CODE: DM-FHP-xxx



FILLING HEAD TYPE JUMBO  
PRODUCT CODE: DM-FHJ-xxx

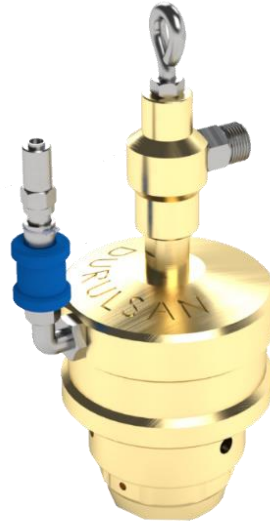


FILLING HEAD TYPE BRASIL  
PRODUCT CODE: DM-FHB-xxx



FILLING HEAD TYPE MECHANIC

PRODUCT CODE: DM-FHM-xxx



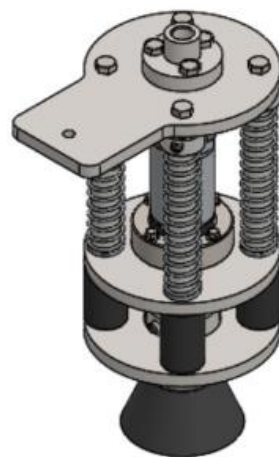
FILLING HEAD TYPE JAW CLUTCH

PRODUCT CODE: DM-FHJC-xxx



FILLING HEAD TYPE F VALVE-ITALIAN

PRODUCT CODE: DM-FHFI-xxx



FILLING HEAD TYPE VALVE

PRODUCT CODE: DM-FHV-xxx

### 3- TECHNICAL SPECIFICATIONS

<b>WORKING PRESSURE</b>	<b>13-15 Bar GAS PRESSURE</b>
<b>WORKING PRESSURE (FHC-FHFV-FHF-FHI-FHFI)</b>	10 Bar AIR PRESSURE
<b>BODY</b>	BRASS/ALUMINIUM/CHROME
<b>HANDLE MATERIAL</b>	BRASS/ALUMINIUM/CHROME
<b>TESTING PRESSURE</b>	25 Bar
<b>SEALING ELEMENT</b>	O-ring and NBR
<b>PISTON CASING</b>	BRASS / ALUMINIUM/CHROME
<b>SPRING MATERIAL</b>	CHROME
<b>SPRING MATERIAL</b>	SPRING STEEL
<b>OPENING PROCESS (FHC-FHP-FHJ-FHM)</b>	SPRING PRESSURE
<b>OPENING PROCESS (FHJC-FHFV-FHF-FHI-FHFI-FHA-FHB-FHV)</b>	AIR PRESSURE
<b>CLOSING PROCESS (FHC-FHP-FHJ-FHM)</b>	SPRING PRESSURE
<b>CLOSING PROCESS (FHJC-FHFV-FHF-FHI-FHFI-FHA-FHB-FHV)</b>	AIR PRESSURE

### 4- CONNECTION SIZES

The connection sizes of filling heads with airline are given as below,

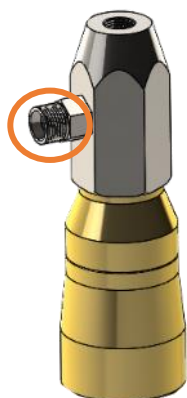
<b>TYPE OF HEAD</b>	<b>CODE OF HEAD</b>	<b>SIZE OF CONNECTION</b>
<b>FILLING HEAD TYPE CAMPING</b>	FHC	
<b>FILLING HEAD TYPE JAW CLUTCH</b>	FHJC	
<b>FILLING HEAD TYPE F VALVE</b>	FHFV	1/2"
<b>FILLING HEAD TYPE PISTON</b>	FHP	
<b>FILLING HEAD TYPE FLANGED</b>	FHF	1/4"
<b>FILLING HEAD TYPE JUMBO</b>	FHJ	
<b>FILLING HEAD TYPE MECHANIC</b>	FHM	3/8"
<b>FILLING HEAD TYPE KEYED FLANGED-ITALIAN</b>	FHI	
<b>FILLING HEAD F VALVE-ITALIAN</b>	FHFI	M18x1,5
<b>FILLING HEAD TYPE AUTOMATIC</b>	FHA	
<b>FILLING HEAD TYPE BRASIL</b>	FHB	
<b>FILLING HEAD TYPE VALVE</b>	FHV	

The example of connection nipples is given as below,



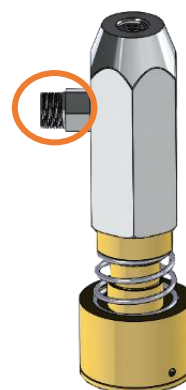
FILLING HEAD TYPE JAW CLUTCH

PRODUCT CODE: DM-FHJC-XXX



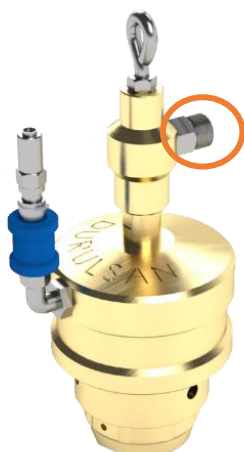
FILLING HEAD TYPE JUMBO

PRODUCT CODE: DM-FHJ-XXX



FILLING HEAD TYPE PISTON

PRODUCT CODE: DM-FHP-XXX



FILLING HEAD TYPE KEYED FLANGED-ITALIAN

PRODUCT CODE: DM-FHI-XXX



FILLING HEAD TYPE F VALVE-ITALIAN

PRODUCT CODE: DM-FHFI-XXX

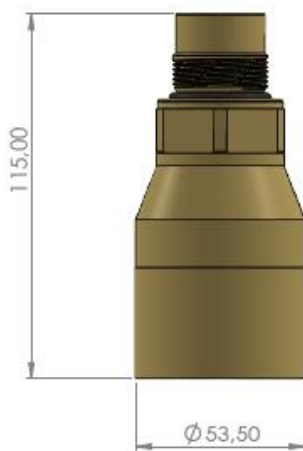
**Whitworth Pipe Thread ISO 228-1(DIN 259, BSPP) Thread Angle is 55°**

Thread size (G / BSPP)	Pipe External Dimensions (Ø)mm	Number of Thread per 1 inch
1/2"	20,955	14
3/8"	16,662	19
1/4"	13,157	19

**Metric ISO 261(DIN 13) Thread Angle is 60°**

Thread size (M)	Pipe External Dimensions (Ø)mm	Pitch
M16	15,962	2
M18	17,958	2,5

**5-OVERALL DIMENSIONS**



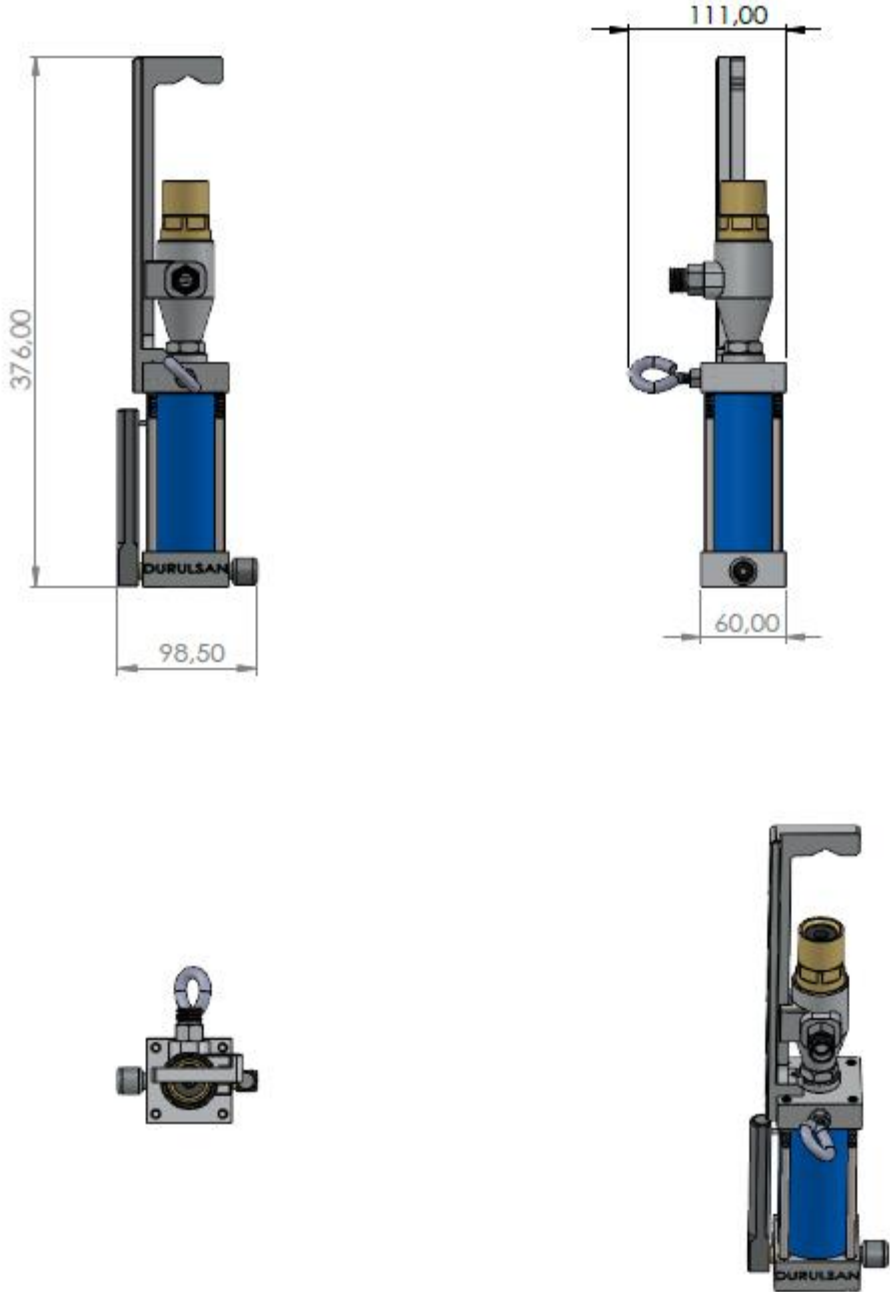
FILLING HEAD TYPE CAMPING

PRODUCT CODE: DM-FHC-xxx



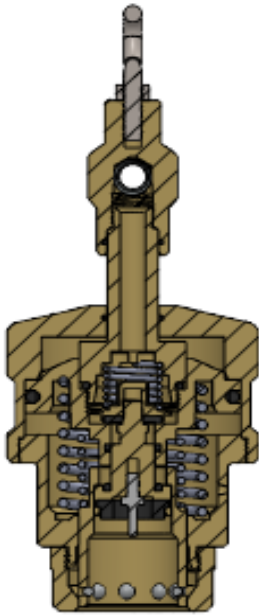
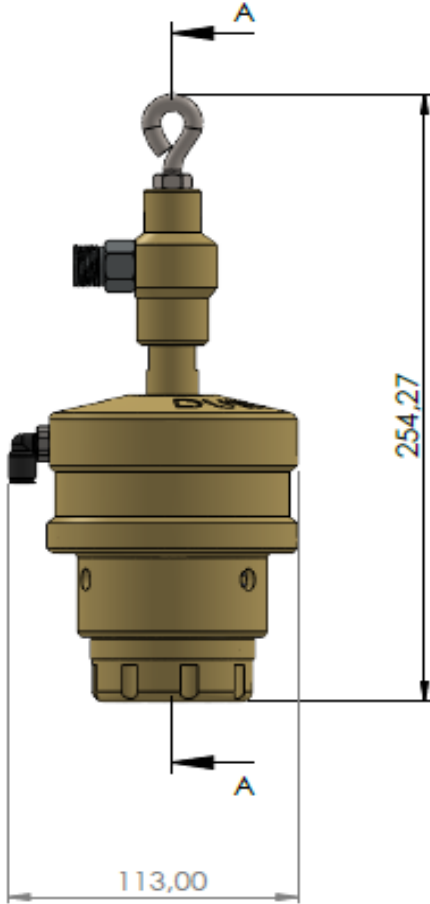
FILLING HEAD TYPE F VALVE

PRODUCT CODE: DM-FHFV-xxx

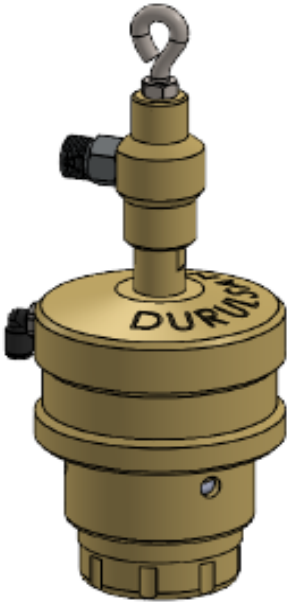


FILLING HEAD TYPE FLANGED

PRODUCT CODE: DM-FHF-xxx

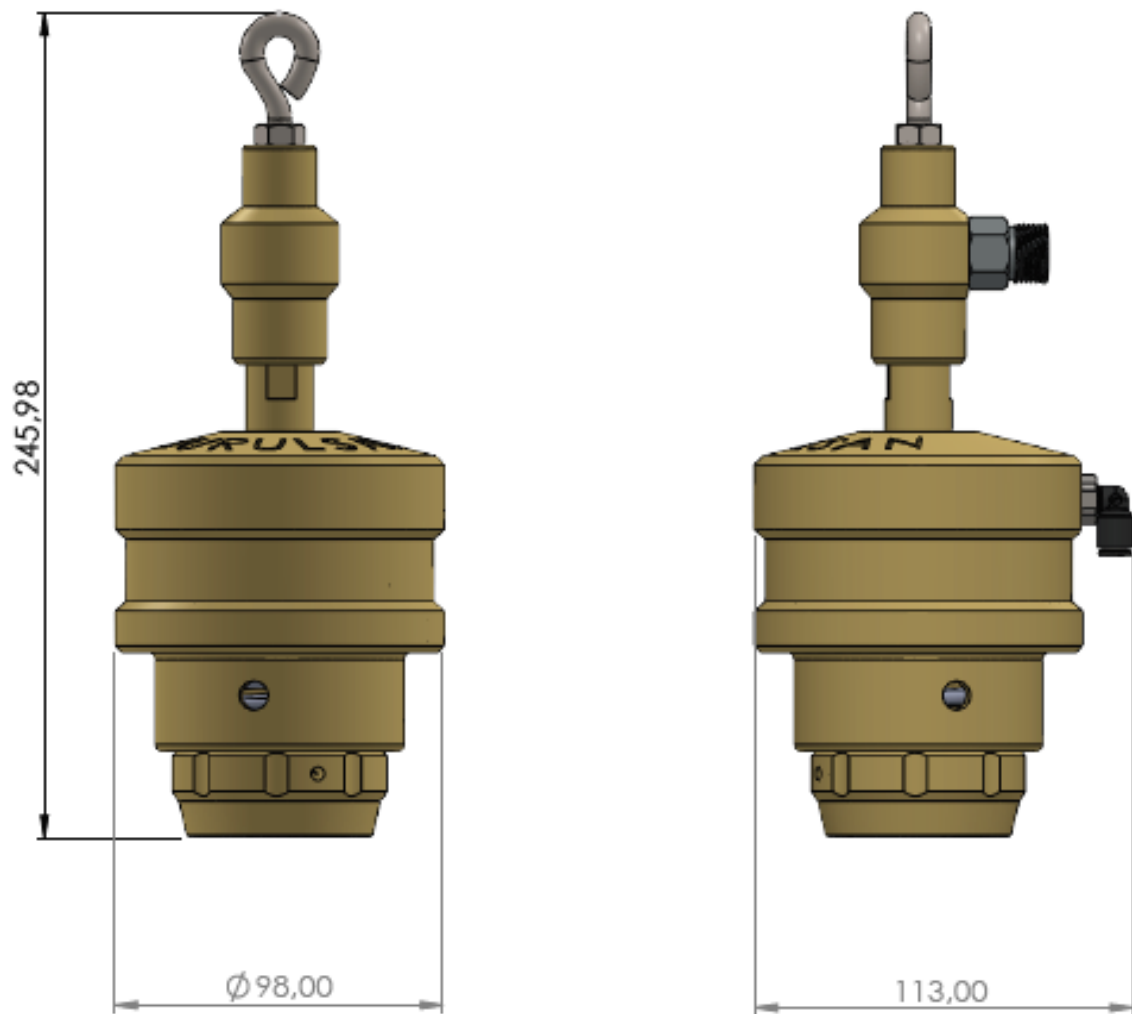


KESIT A-A



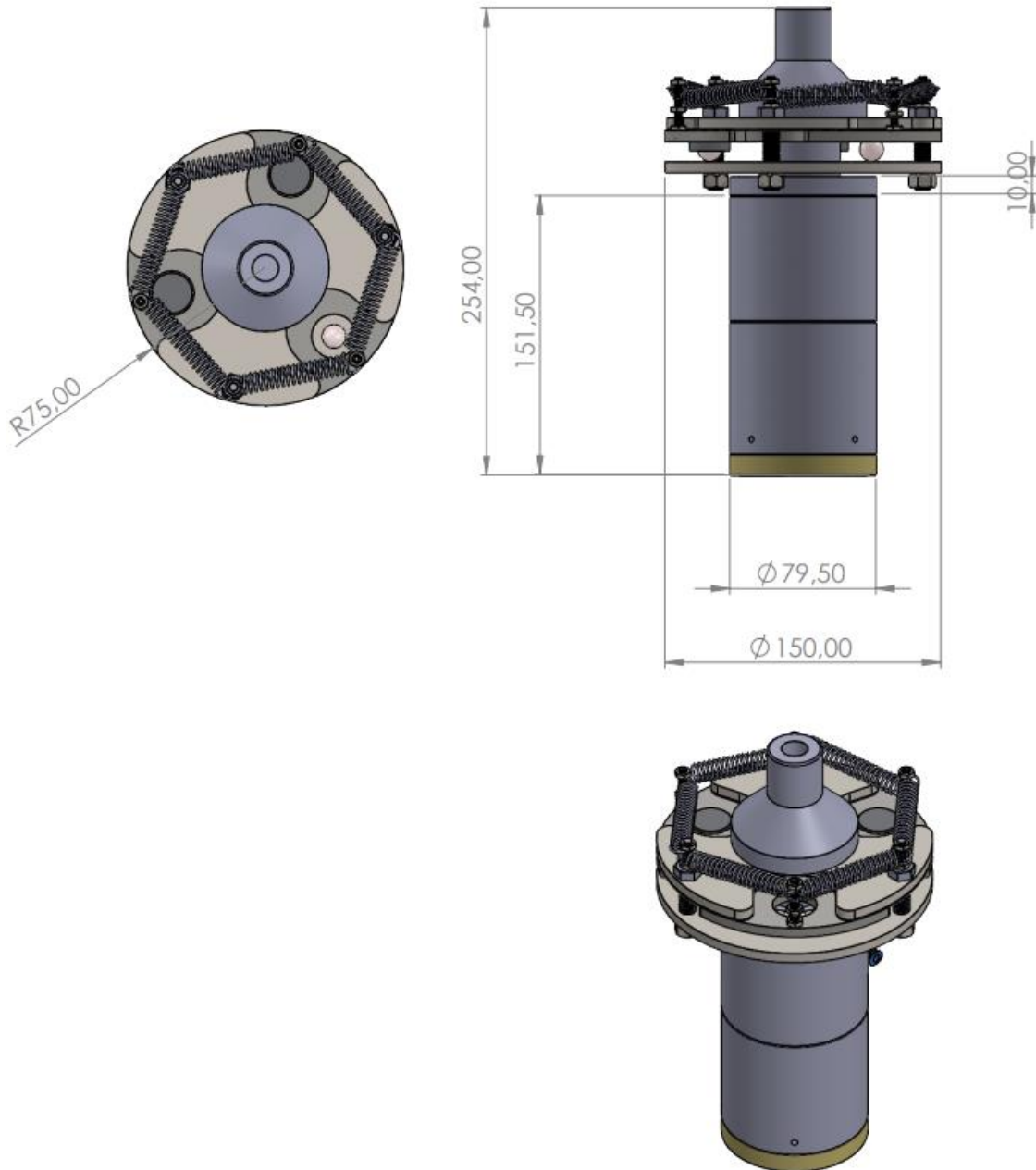
FILLING HEAD TYPE JAW CLUTCH

PRODUCT CODE: DM-FHJC-xxx



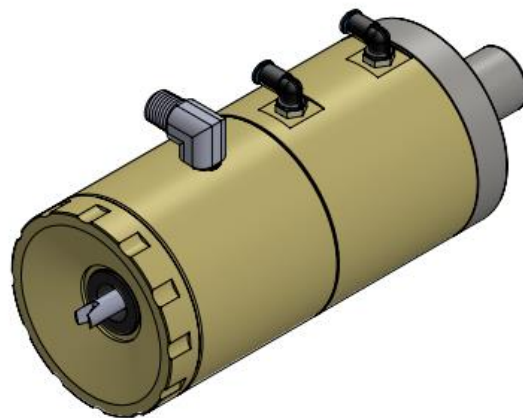
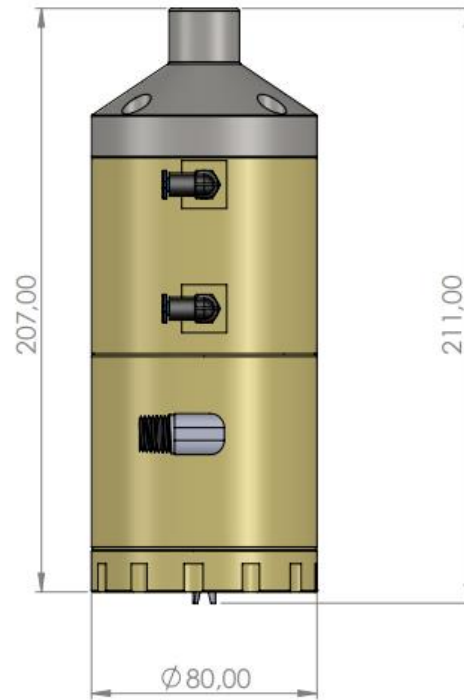
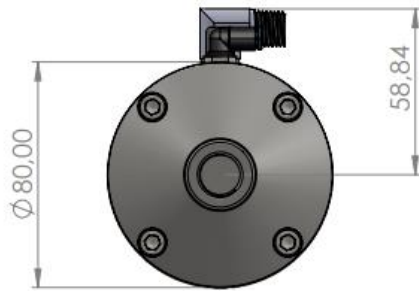
FILLING HEAD TYPE AUTOMATIC

PRODUCT CODE: DM-FHA-xxx



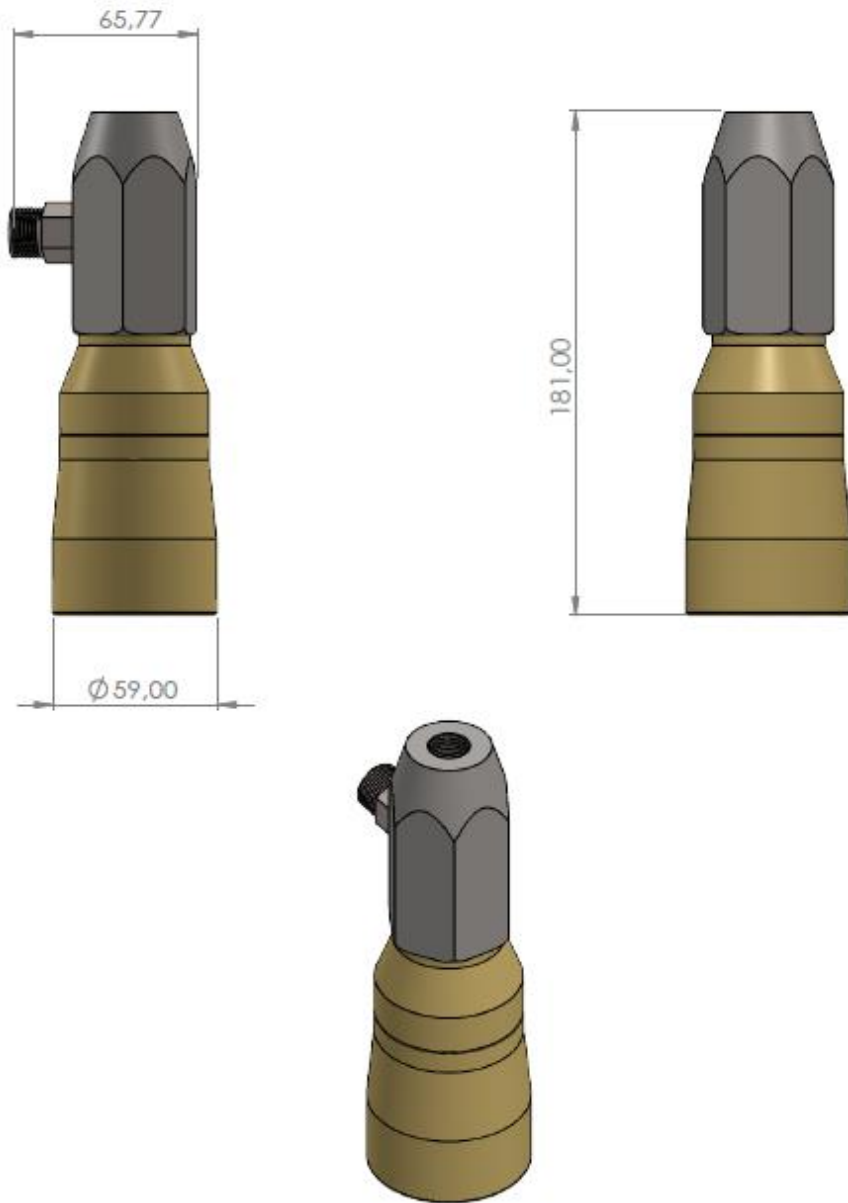
FILLING HEAD TYPE BRASIL

PRODUCT CODE: DM-FHB-xxx



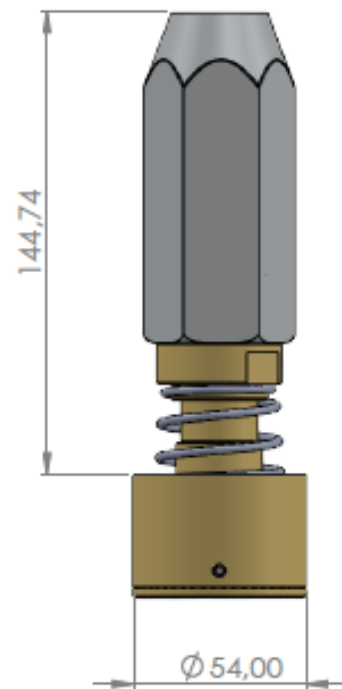
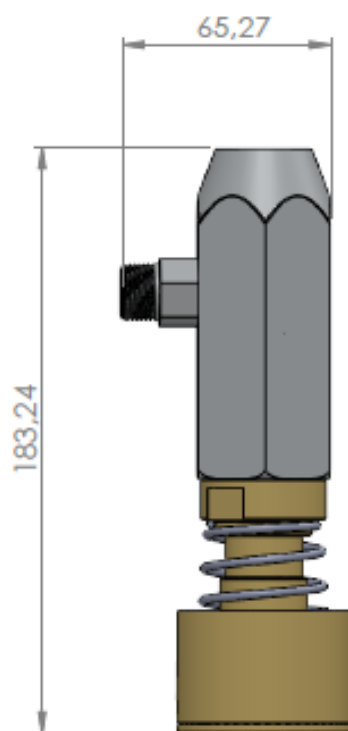
FILLING HEAD TYPE JUMBO

PRODUCT CODE: DM-FHJ-xxx



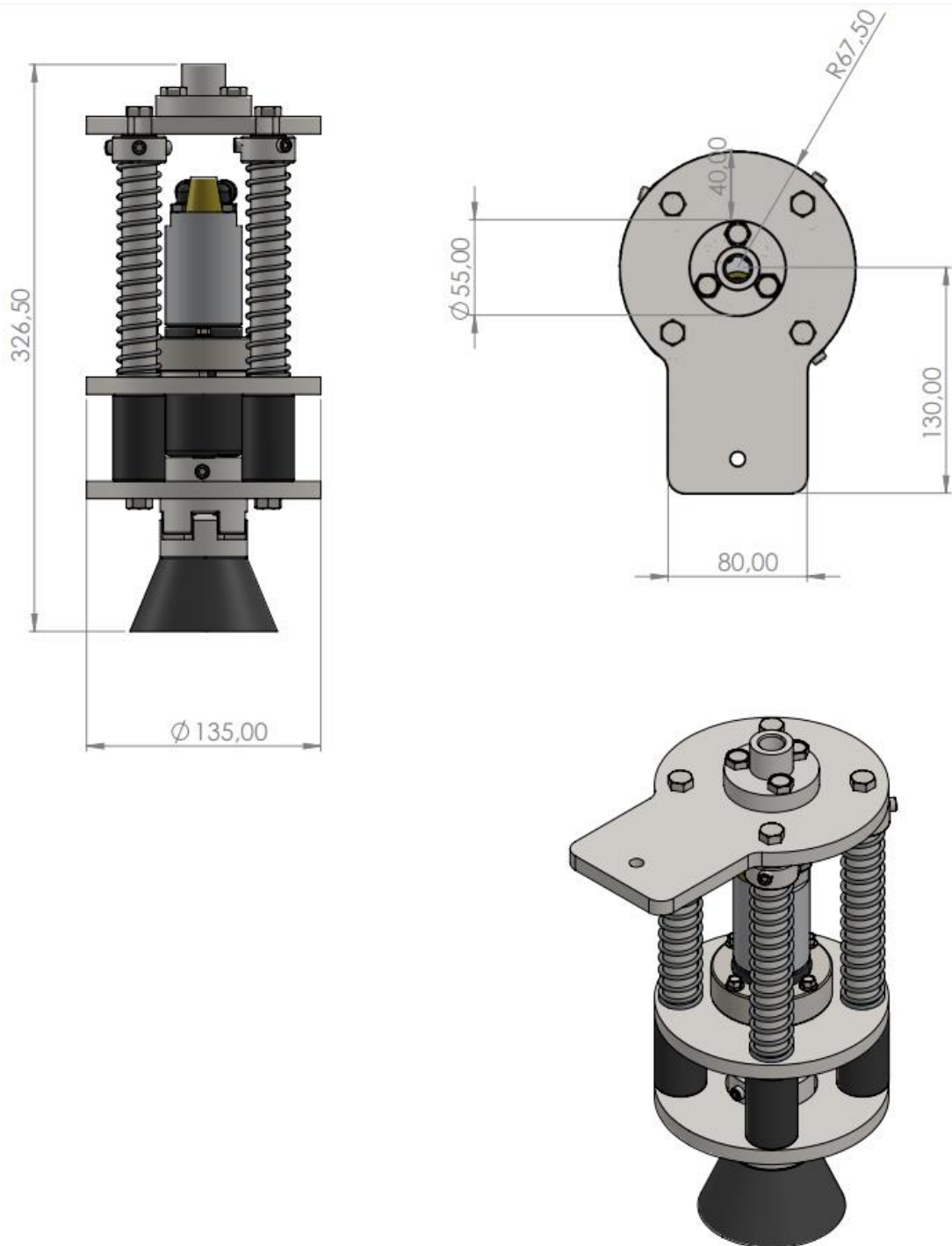
FILLING HEAD TYPE PISTON

PRODUCT CODE: DM-FHP-xxx



FILLING HEAD TYPE VALVE

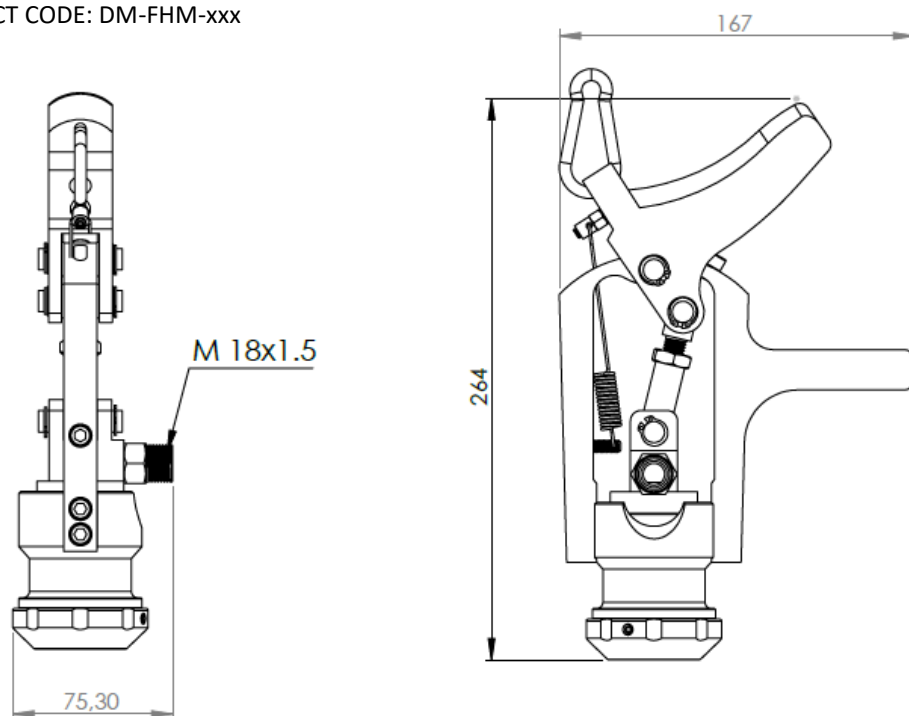
PRODUCT CODE: DM-FHV-xxx





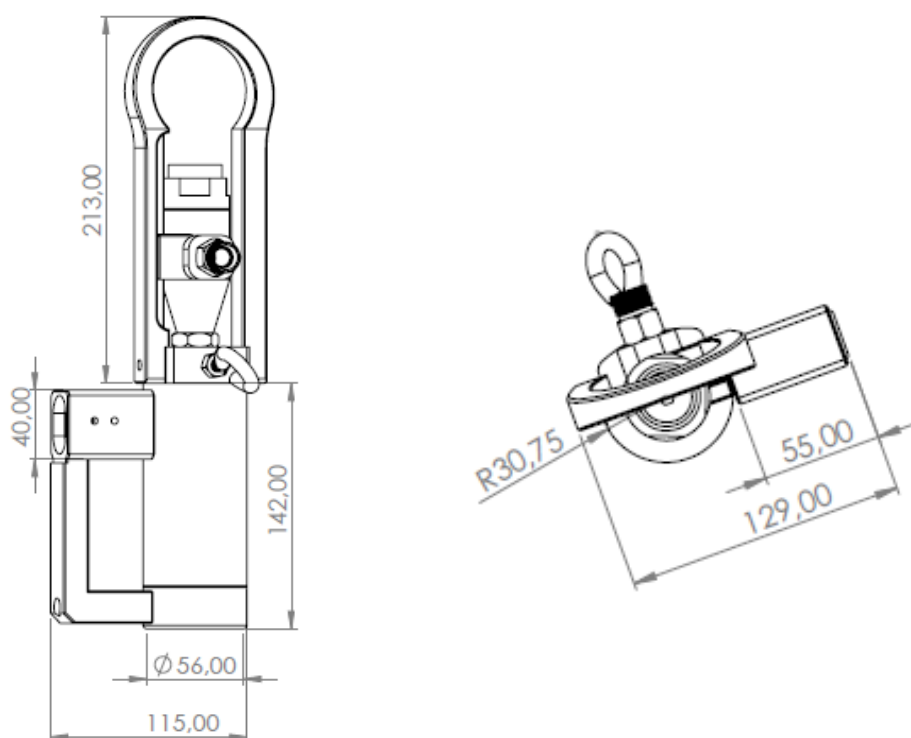
FILLING HEAD TYPE MECHANIC

PRODUCT CODE: DM-FHM-xxx

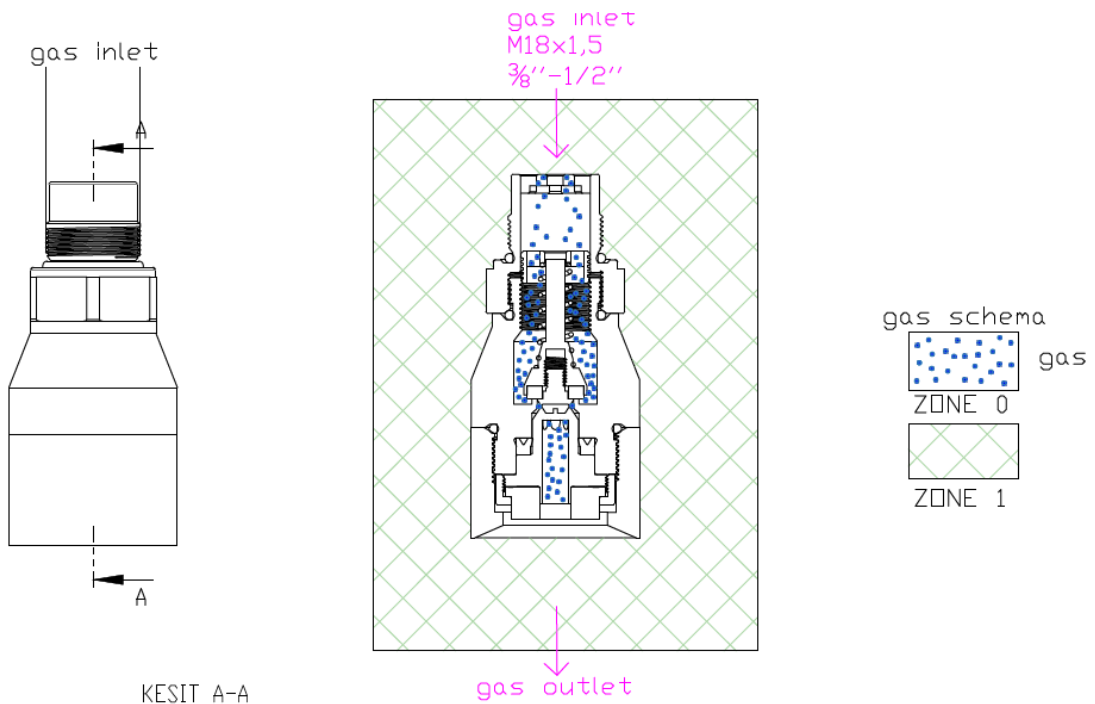


FILLING HEAD TYPE F VALVE-ITALIAN

PRODUCT CODE: DM-FHFI-xxx



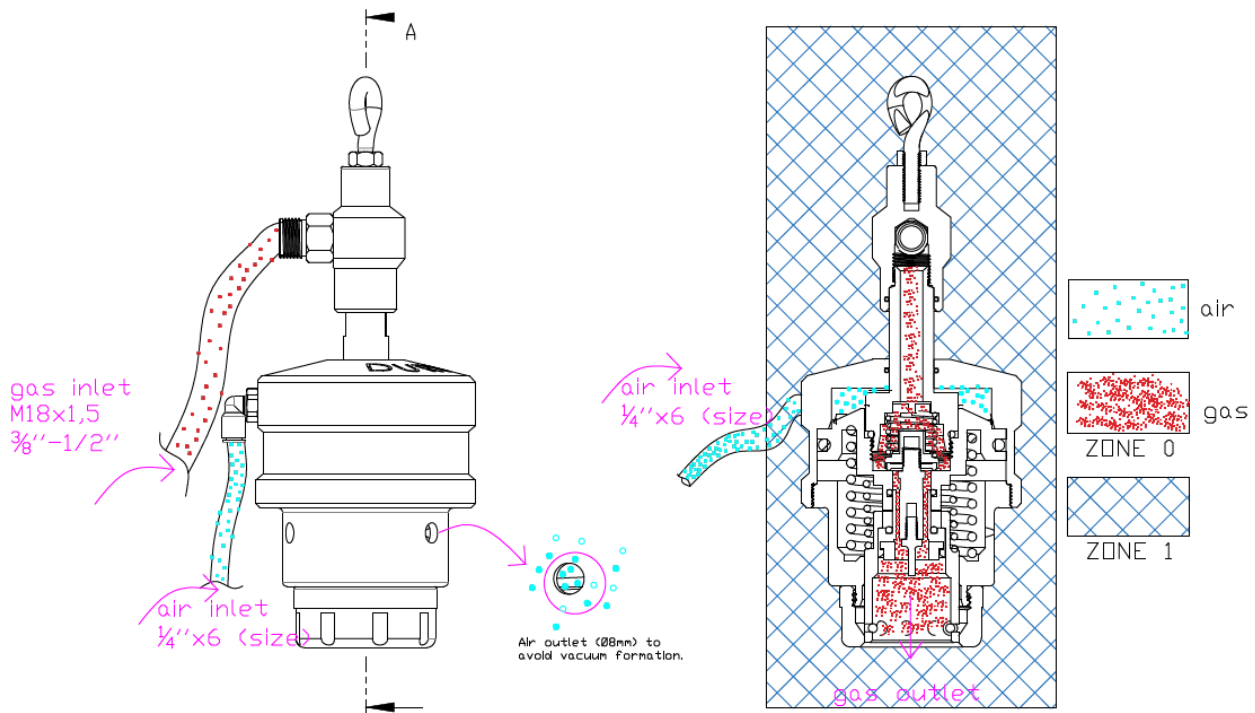
## 6-HAZARDOUS ZONE AND FLOW SCHEMA AREA DRAWING



there is no pneumatic connection. This filling head works with cylinder valve pressure. when the place to lpg cylinder, valve head push the clape the filling head opens.

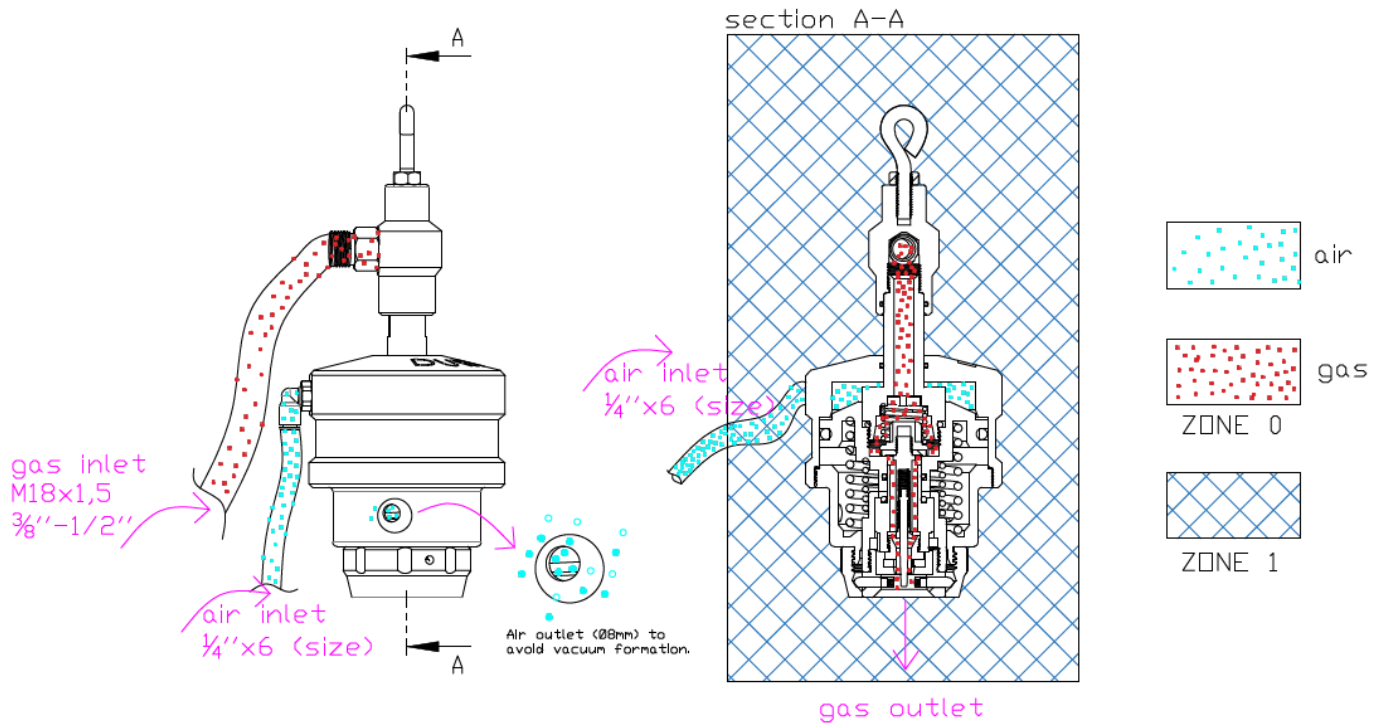
### FILLING HEAD TYPE CAMPING

PRODUCT CODE: DM-FHC-xxx



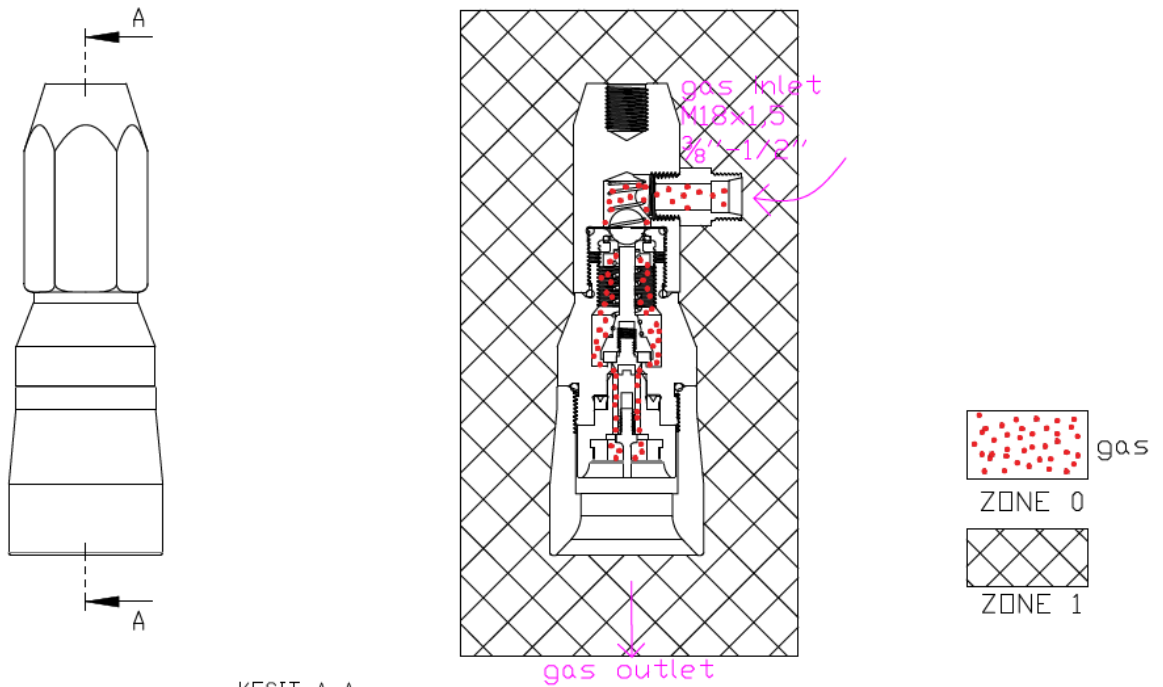
### FILLING HEAD TYPE FLANGED

PRODUCT CODE: DM-FHF-xxx



**FILLING HEAD TYPE JAW CLUTCH**

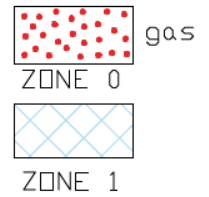
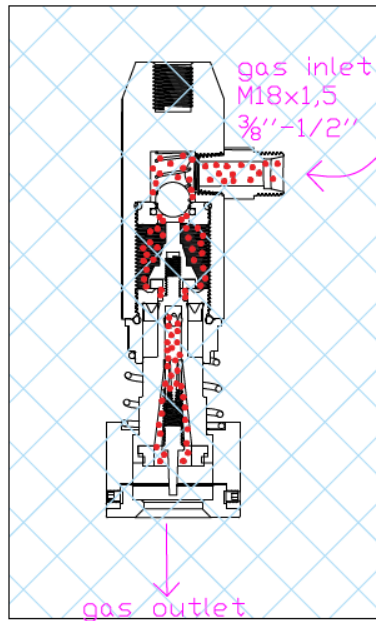
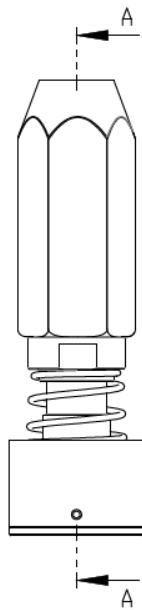
PRODUCT CODE: DM-FHJC-xxx



there is no pneumatic connection. This filling head works with cylinder valve pressure, when the place to lpg cylinder, valve head push the clape the filling head opens.

**FILLING HEAD TYPE JUMBO**

PRODUCT CODE: DM-FHJ-xxx



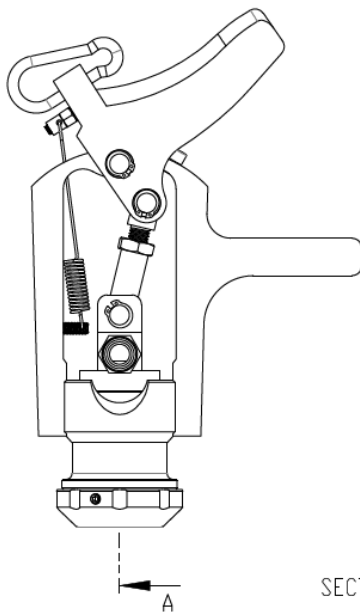
KESIT A-A

there is no pneumatic connection. This filling head works with cylinder valve pressure, when the place to lpg cylinder, valve head push the clape the filling head opens.

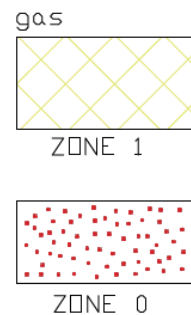
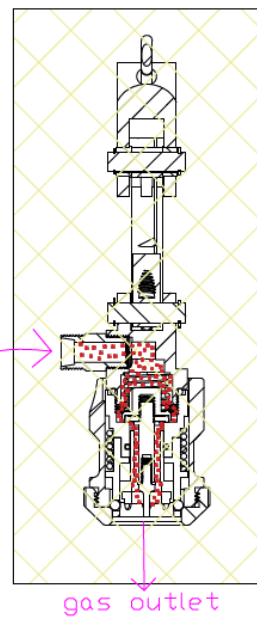
**FILLING HEAD TYPE PISTON**

PRODUCT CODE: DM-FHP-xxx

there is no pneumatic connection. This filling head works with manual spring pressure. Operator controlled.



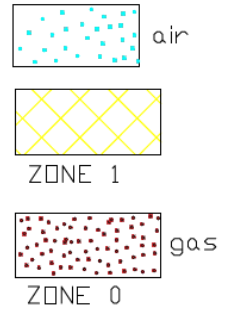
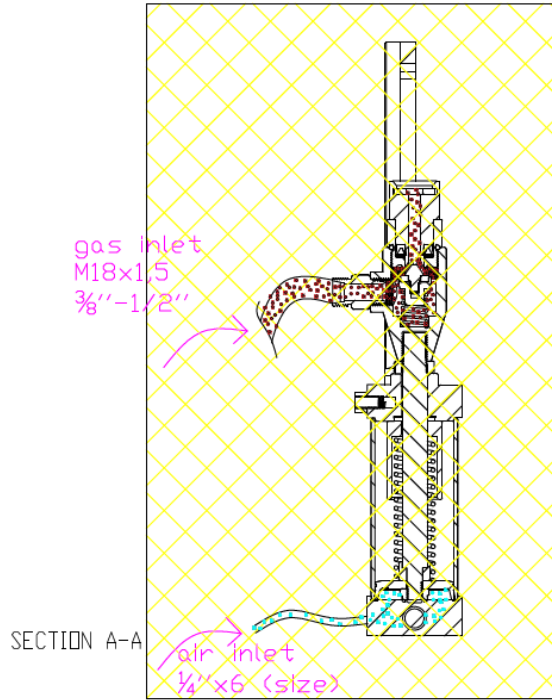
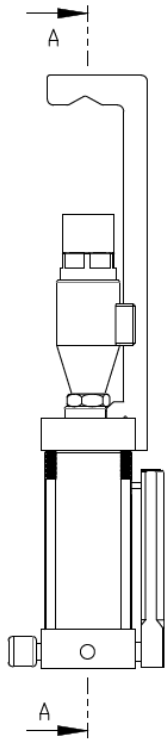
gas inlet  
M18x1,5  
3/8"-1/2"



SECTION A-A

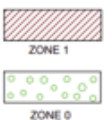
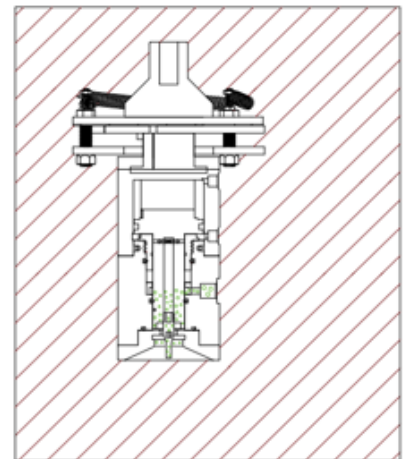
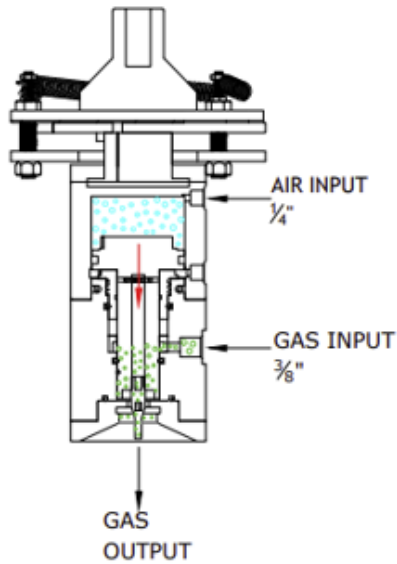
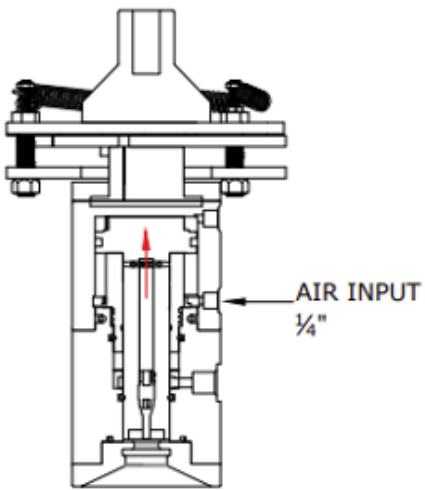
**FILLING HEAD TYPE MECHANIC**

PRODUCT CODE: DM-FHM-xxx



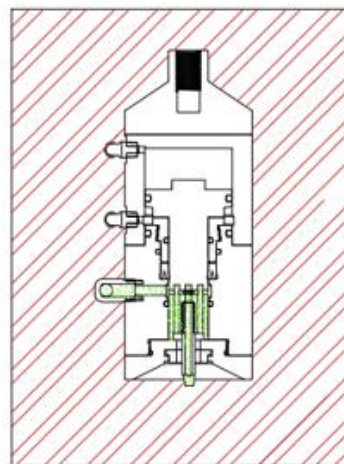
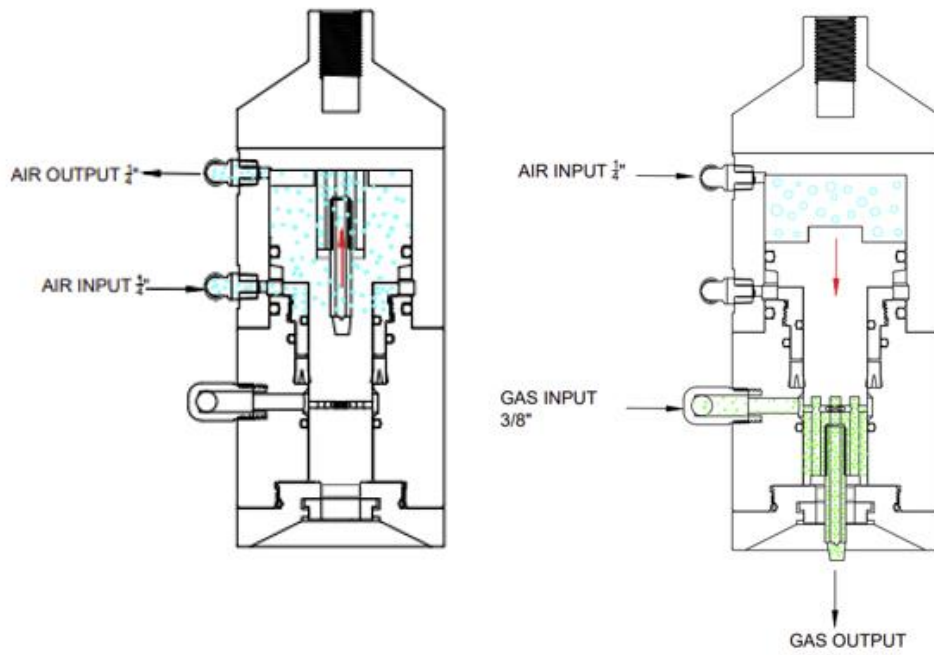
FILLING HEAD TYPE F VALVE

PRODUCT CODE: DM-FHFV-xxx



FILLING HEAD TYPE AUTOMATIC

PRODUCT CODE: DM-FHA-xxx



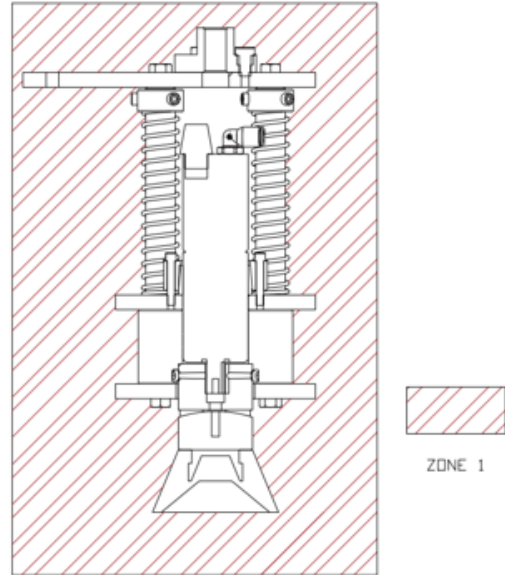
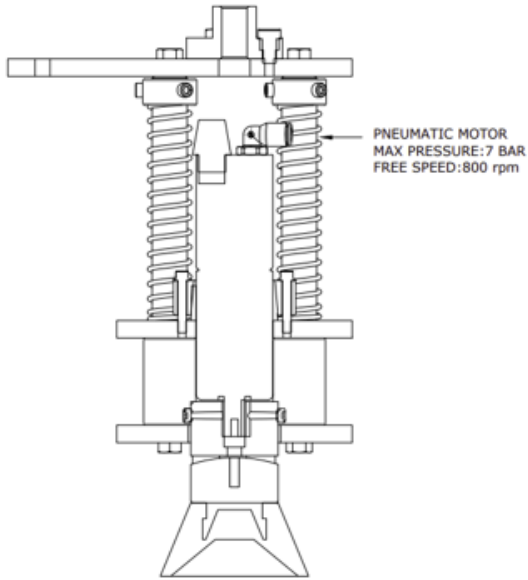
ZONE 0



ZONE 1

FILLING HEAD TYPE BRASIL

PRODUCT CODE: DM-FHB-xxx



FILLING HEAD TYPE VALVE

PRODUCT CODE: DM-FHV-xxx

7-LABEL

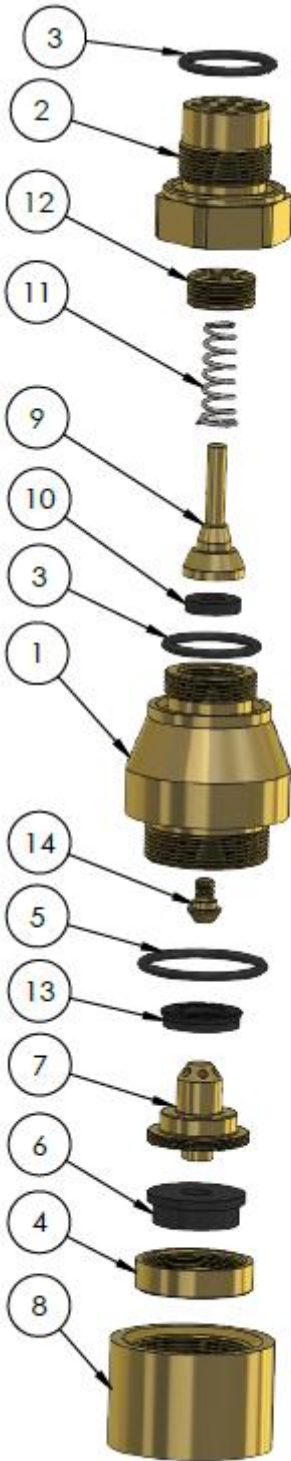
	S.N: 101																																																		
	MADE IN TURKEY																																																		
PRODUCT NAME : DM FILLING HEAD																																																			
PRODUCT CODE : DM-FHXX-XXX																																																			
PRODUCT. DATE : 2020																																																			
<table border="0" style="width: 100%;"> <tr> <td style="width: 30%;"><input type="checkbox"/> C</td> <td style="width: 40%;"><input type="checkbox"/> CAMPING</td> <td style="width: 30%;"><input type="checkbox"/> 012</td> <td style="width: 10%;">: 1/2"</td> </tr> <tr> <td><input type="checkbox"/> FV</td> <td><input type="checkbox"/> F VALVE</td> <td><input type="checkbox"/> 038</td> <td>: 3/8"</td> </tr> <tr> <td><input type="checkbox"/> F</td> <td><input type="checkbox"/> FLANGED</td> <td><input type="checkbox"/> 014</td> <td>: 1/4"</td> </tr> <tr> <td><input type="checkbox"/> JC</td> <td><input type="checkbox"/> JAW CLUTCH</td> <td><input type="checkbox"/> 815</td> <td>: M18x1,5</td> </tr> <tr> <td><input type="checkbox"/> J</td> <td><input type="checkbox"/> JUMBO</td> <td colspan="2">Connection</td> </tr> <tr> <td><input type="checkbox"/> P</td> <td><input type="checkbox"/> PISTON</td> <td><input type="checkbox"/> 20</td> <td></td> </tr> <tr> <td><input type="checkbox"/> M</td> <td><input type="checkbox"/> MECHANIC</td> <td><input type="checkbox"/> 21</td> <td></td> </tr> <tr> <td><input type="checkbox"/> I</td> <td><input type="checkbox"/> FLANGED-ITALIAN</td> <td><input type="checkbox"/> 22</td> <td></td> </tr> <tr> <td><input type="checkbox"/> FI</td> <td><input type="checkbox"/> F VALVE-ITALIAN</td> <td><input type="checkbox"/> 24</td> <td></td> </tr> <tr> <td><input type="checkbox"/> A</td> <td><input type="checkbox"/> AUTOMATIC</td> <td><input type="checkbox"/> 27</td> <td></td> </tr> <tr> <td><input type="checkbox"/> B</td> <td><input type="checkbox"/> BRASIL</td> <td><input type="checkbox"/> 35</td> <td></td> </tr> <tr> <td><input type="checkbox"/> V</td> <td><input type="checkbox"/> VALVE</td> <td></td> <td></td> </tr> </table>				<input type="checkbox"/> C	<input type="checkbox"/> CAMPING	<input type="checkbox"/> 012	: 1/2"	<input type="checkbox"/> FV	<input type="checkbox"/> F VALVE	<input type="checkbox"/> 038	: 3/8"	<input type="checkbox"/> F	<input type="checkbox"/> FLANGED	<input type="checkbox"/> 014	: 1/4"	<input type="checkbox"/> JC	<input type="checkbox"/> JAW CLUTCH	<input type="checkbox"/> 815	: M18x1,5	<input type="checkbox"/> J	<input type="checkbox"/> JUMBO	Connection		<input type="checkbox"/> P	<input type="checkbox"/> PISTON	<input type="checkbox"/> 20		<input type="checkbox"/> M	<input type="checkbox"/> MECHANIC	<input type="checkbox"/> 21		<input type="checkbox"/> I	<input type="checkbox"/> FLANGED-ITALIAN	<input type="checkbox"/> 22		<input type="checkbox"/> FI	<input type="checkbox"/> F VALVE-ITALIAN	<input type="checkbox"/> 24		<input type="checkbox"/> A	<input type="checkbox"/> AUTOMATIC	<input type="checkbox"/> 27		<input type="checkbox"/> B	<input type="checkbox"/> BRASIL	<input type="checkbox"/> 35		<input type="checkbox"/> V	<input type="checkbox"/> VALVE		
<input type="checkbox"/> C	<input type="checkbox"/> CAMPING	<input type="checkbox"/> 012	: 1/2"																																																
<input type="checkbox"/> FV	<input type="checkbox"/> F VALVE	<input type="checkbox"/> 038	: 3/8"																																																
<input type="checkbox"/> F	<input type="checkbox"/> FLANGED	<input type="checkbox"/> 014	: 1/4"																																																
<input type="checkbox"/> JC	<input type="checkbox"/> JAW CLUTCH	<input type="checkbox"/> 815	: M18x1,5																																																
<input type="checkbox"/> J	<input type="checkbox"/> JUMBO	Connection																																																	
<input type="checkbox"/> P	<input type="checkbox"/> PISTON	<input type="checkbox"/> 20																																																	
<input type="checkbox"/> M	<input type="checkbox"/> MECHANIC	<input type="checkbox"/> 21																																																	
<input type="checkbox"/> I	<input type="checkbox"/> FLANGED-ITALIAN	<input type="checkbox"/> 22																																																	
<input type="checkbox"/> FI	<input type="checkbox"/> F VALVE-ITALIAN	<input type="checkbox"/> 24																																																	
<input type="checkbox"/> A	<input type="checkbox"/> AUTOMATIC	<input type="checkbox"/> 27																																																	
<input type="checkbox"/> B	<input type="checkbox"/> BRASIL	<input type="checkbox"/> 35																																																	
<input type="checkbox"/> V	<input type="checkbox"/> VALVE																																																		
CERTIFICATE NO IEP 19 ATEX 0682U																																																			
II 1/2 G Ex hc IIA Ga/Gb																																																			

50

OPAQUE LABEL



## 8-EXPLODED VIEW

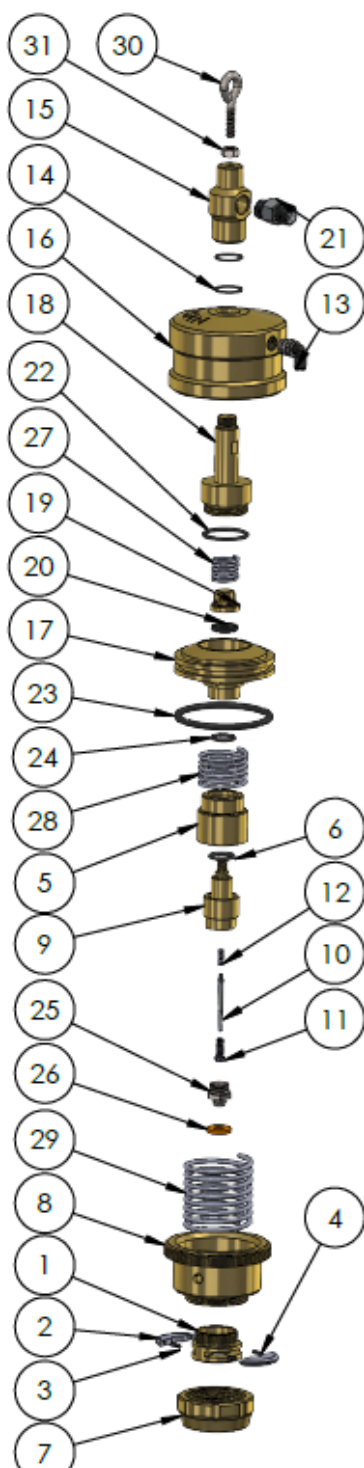


FILLING HEAD TYPE CAMPING

PRODUCT CODE: DM-FHC-xxx

NO	PART NAME	PART CODE	UNIT
1	PISTON BEARING	DM-FHC-112-1	1
2	COVER OF PISTON BEARING	DM-FHC-112-2	1
3	26X3 O-RING	DM-FHC-112-3	2
4	GASKET FIXING BUSH	DM-FHC-112-4	1
5	36X3 O-RING	DM-FHC-112-5	1
6	GAS PUMPING HEAD SEAL	DM-FHC-112-6	1
7	GAS PUMPING HEAD	DM-FHC-112-7	1
8	BOTTOM BODY	DM-FHC-112-8	1
9	CLACK	DM-FHC-112-9	1
10	CLACK SEAL	DM-FHC-112-10	1
11	CLACK PRESSURE SPRING	DM-FHC-112-11	1
12	SPRING PRESSURE NUT	DM-FHC-112-12	1
13	PISTON BEARING SEAL	DM-FHC-112-13	1
14	FIXING SCREW OF CLACK SEAL	DM-FHC-112-14	1

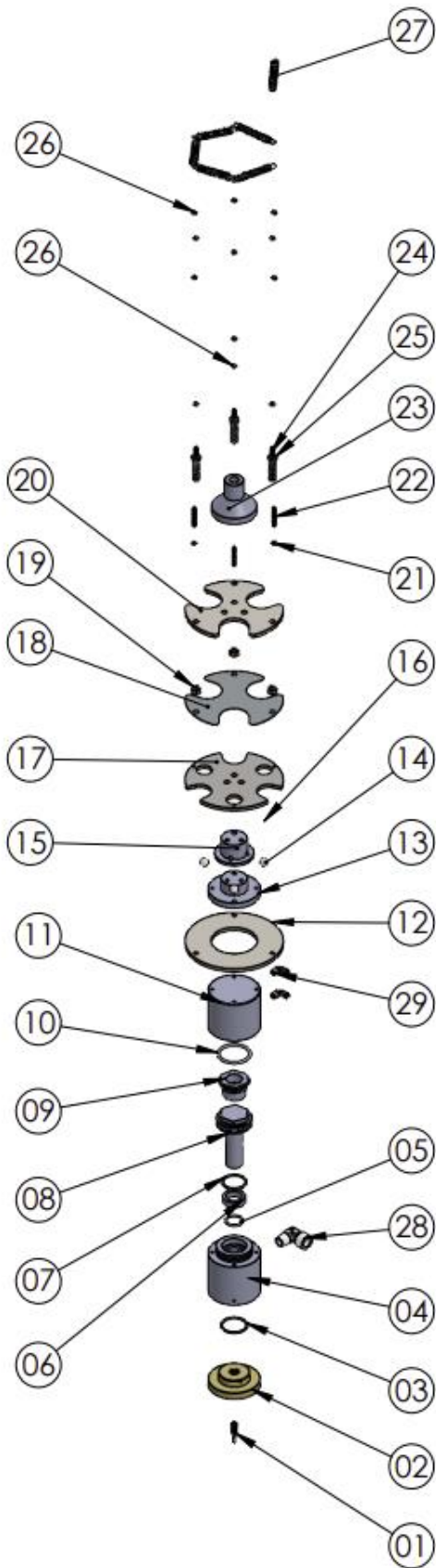




## FILLING HEAD TYPE JAW CLUTCH

PRODUCT CODE: DM-FHJC-xxx

NO	PART NAME	PART CODE	UNIT
1	CLAW BEARING	DM-FHJC-003-1	1
2	CLAW	DM-FHJC-003-2	2
3	CLAW SPRING	DM-FHJC-003-3	2
4	CLAW SPRING	DM-FHJC-003-4	2
5	PISTON BEARING	DM-FHJC-003-5	1
6	17x3 O-RING	DM-FHJC-003-6	1
7	CLAW NUT	DM-FHJC-003-7	1
8	BEARING COVER OF AIR PASSAGE PISTON	DM-FHJC-003-8	1
9	CLACK BEARING BOTTOM BODY	DM-FHJC-003-9	1
10	FILLING NEEDLE	DM-FHJC-003-10	1
11	NEEDLE GRIPPER	DM-FHJC-003-11	1
12	NEEDLE SPRING	DM-FHJC-003-12	1
13	1_4x6mm ELBOW	DM-FHJC-003-13	1
14	20x2 O-RING	DM-FHJC-003-14	2
15	GAS INLET BODY	DM-FHJC-003-15	1
16	AIR PASSAGE BEARING	DM-FHJC-003-16	1
17	GAS PASSAGE PISTON	DM-FHJC-003-17	1
18	GAS PASSAGE PISTON SHAFT	DM-FHJC-003-18	1
19	CLACK	DM-FHJC-003-19	1
20	CLACK WASHER	DM-FHJC-003-20	1
21	NIPPLE	DM-FHJC-003-21	1
22	33x3 O-RING	DM-FHJC-003-22	1
23	72,4x5,33 O-RING	DM-FHJC-003-23	1
24	17x2.5 O-RING	DM-FHJC-003-24	1
25	FILLING NOZZLE CHROME	DM-FHJC-003-25	1
26	FILLING NOZZLE GASKET	DM-FHJC-003-26	1
27	CLACK SPRING	DM-FHJC-003-27	1
28	CLACK BEARING PRESSURE SPRING	DM-FHJC-003-28	1
29	GAS PASSAGE PISTON SPRING	DM-FHJC-003-29	1
30	HANGER	DM-FHJC-003-30	1
31	M8 NUT	DM-FHJC-003-31	1



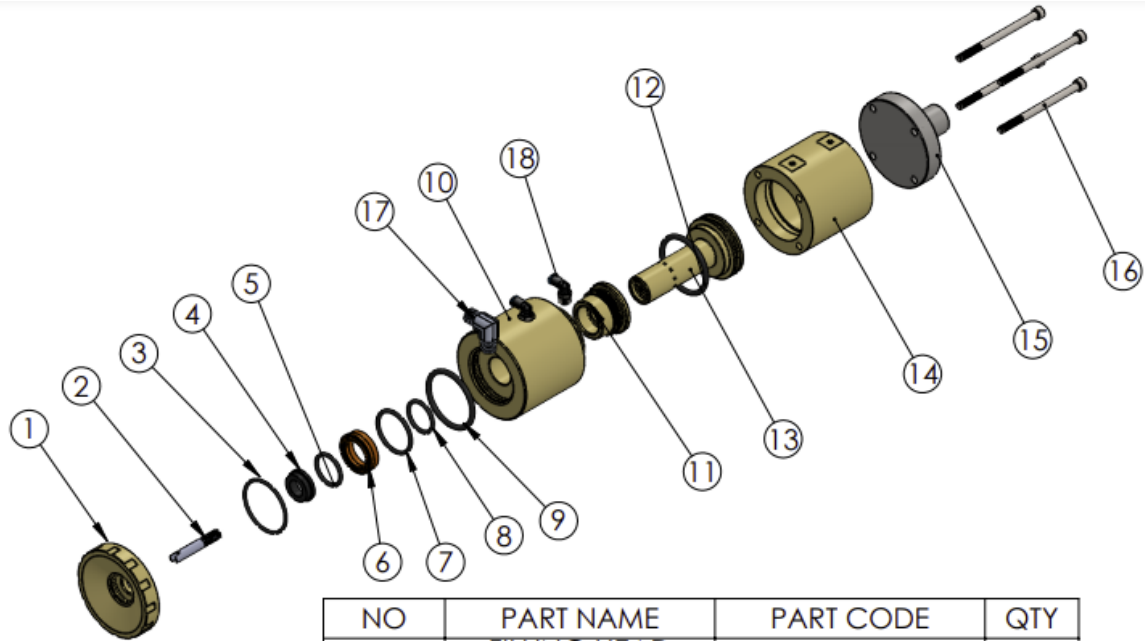
## FILLING HEAD TYPE AUTOMATIC

PRODUCT CODE: DM-FHA-xxx

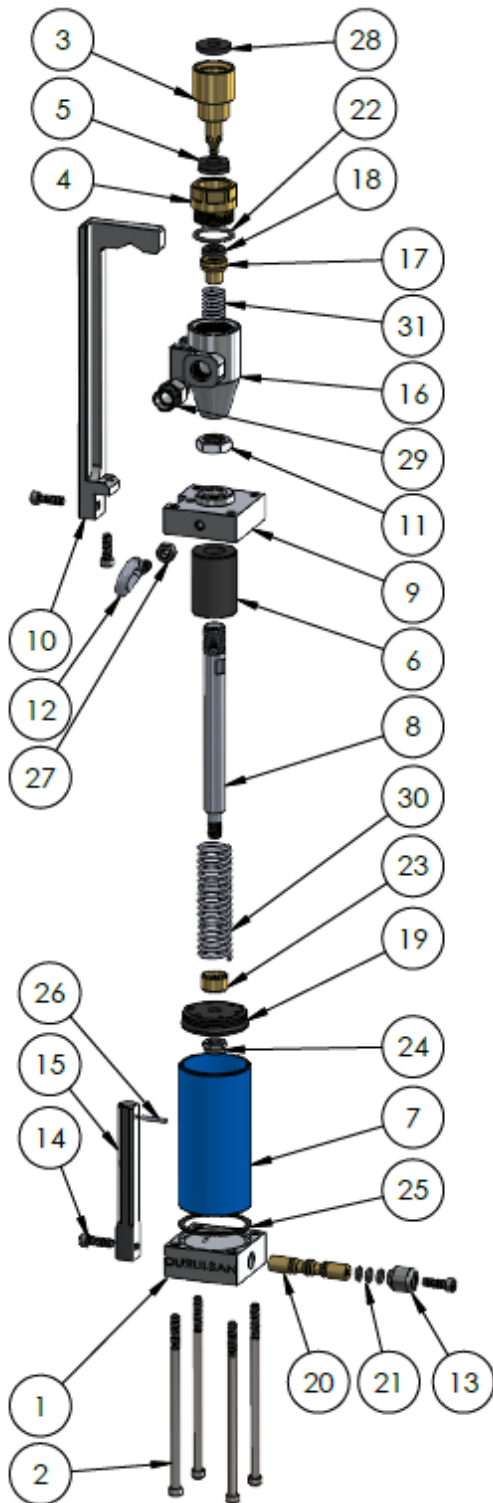
NO	PART NAME	PART CODE	QTY
01	NEEDLE	DM-FHA-XXX.01	1
02	HEAD SEAL SEAT	DM-FHA-XXX.02	1
03	ORING(36X3MM)	DM-FHA-XXX.03	1
04	SUB LINK HEADER	DM-FHA-XXX.04	1
05	ORING(25X3MM)	DM-FHA-XXX.05	1
06	SEAL(25X35X10 MM)	DM-FHA-XXX.06	1
07	ORING(36X3MM)	DM-FHA-XXX.07	1
08	INNER PISTON	DM-FHA-XXX.08	1
09	CENTERING BRASS BEARING	DM-FHA-XXX.09	1
10	ORING(48X3MM)	DM-FHA-XXX.10	1
11	PISTON	DM-FHA-XXX.11	1
12	BALL SUPPORT SEAT PIECE	DM-FHA-XXX.12	1
13	HEADER CONNECTION FLANGE	DM-FHA-XXX.13	1
14	SMALL BALL	DM-FHA-XXX.14	2
15	INTERNAL SUPPORT	DM-FHA-XXX.15	1
16	BIG BALL	DM-FHA-XXX.16	2
17	HEAD FITTING PIECE	DM-FHA-XXX.17	1
18	SPRING STEEL	DM-FHA-XXX.18	1
19	NUTS	DM-FHA-XXX.19	3
20	PISTON CONNECTOR PIECE	DM-FHA-XXX.20	1
21	NUTS	DM-FHA-XXX.21	6
22	BOLT	DM-FHA-XXX.22	6
23	PISTON CONNECTOR SHAFT	DM-FHA-XXX.23	1
24	CONNECTING BOLT	DM-FHA-XXX.24	3
25	NUTS	DM-FHA-XXX.25	3
26	NUTS	DM-FHA-XXX.26	12
27	TENSION SPRING	DM-FHA-XXX.27	6
28	FITTINGS(3/8-M18/1,5)	DM-FHA-XXX.28	1
29	FITTINGS(1/4)	DM-FHA-XXX.29	2

FILLING HEAD TYPE BRASIL

PRODUCT CODE: DM-FHB-xxx



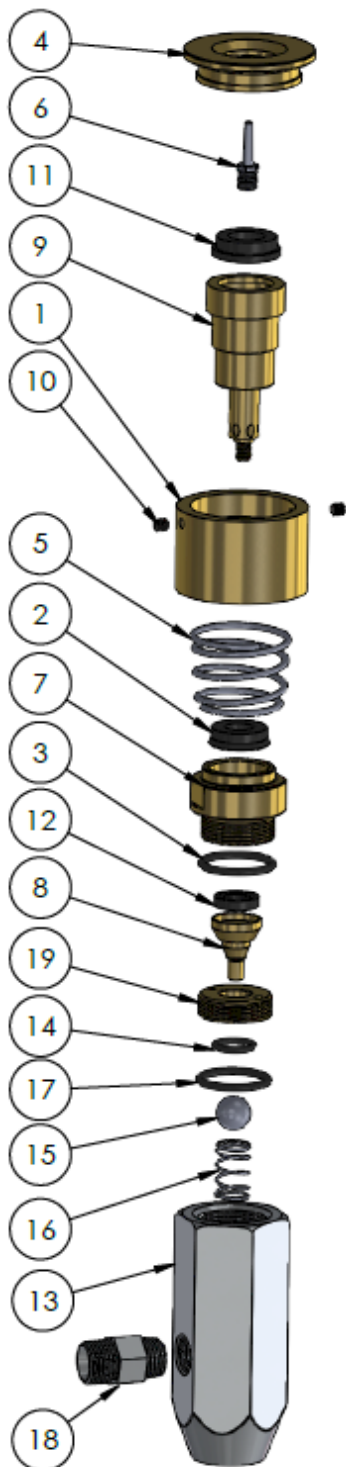
NO	PART NAME	PART CODE	QTY
1	FILLING HEAD COVER	DM-FHB-XXX.01	1
2	FILLING NEEDLE	DM-FHB-XXX.02	1
3	O-RING (45X2,5)	DM-FHB-XXX.03	1
4	FILLING NEEDLE	DM-FHB-XXX.04	1
5	O-RING (25X3)	DM-FHB-XXX.05	1
6	SEAL (25X35X10)	DM-FHB-XXX.06	1
7	O-RING (35X3)	DM-FHB-XXX.07	1
8	O-RING (25X3)	DM-FHB-XXX.08	1
9	O-RING (47X4)	DM-FHB-XXX.09	1
10	FILLING HEAD BODY 1	DM-FHB-XXX.10	1
11	MAIN BODY NUT	DM-FHB-XXX.11	1
12	O-RING (47X4)	DM-FHB-XXX.12	1
13	FILLING NEEDLE SOCKET	DM-FHB-XXX.13	1
14	FILLING HEAD BODY 2	DM-FHB-XXX.14	1
15	FILLING HEAD UP COVER	DM-FHB-XXX.15	1
16	SOCKET HEAD CAP SCREW (M6)	DM-FHB-XXX.16	4
17	ELBOW(3/8")	DM-FHB-XXX.17	1
18	FITTINGS(4MM)	DM-FHB-XXX.18	2



## FILLING HEAD TYPE F VALVE

PRODUCT CODE: DM-FHFV-xxx

NO	PART NAME	PART CODE	UNIT
1	BOTTOM COVER	DM-FHFV-002-1	1
2	COVER ASSEMBLY BOLT M6X	DM-FHFV-002-2	4
3	FILLING NOZZLE	DM-FHFV-002-3	1
4	SPACER NUT	DM-FHFV-002-4	1
5	SEAL OF SPACER NUT	DM-FHFV-002-5	1
6	CASTERMID	DM-FHFV-002-6	1
7	CYLINDER	DM-FHFV-002-7	1
8	SHAFT OF CYLINDER PISTON	DM-FHFV-002-8	1
9	TOP COVER	DM-FHFV-002-9	1
10	LEVER OF CENTERING	DM-FHFV-002-10	1
11	M16 NUT	DM-FHFV-002-11	1
12	M8 HANGER	DM-FHFV-002-12	1
13	KNOB OF MOVEMENT SHAFT	DM-FHFV-002-13	1
14	M6X20 ALLEN BOLT	DM-FHFV-002-14	4
15	CYLINDER BAR	DM-FHFV-002-15	1
16	FILLING HEAD	DM-FHFV-002-16	1
17	CLACK	DM-FHFV-002-17	1
18	CLACK SEAL	DM-FHFV-002-18	1
19	PISTON SEAL	DM-FHFV-002-19	1
20	MOVEMENT SHAFT	DM-FHFV-002-20	1
21	8X2 O-RING	DM-FHFV-002-21	3
22	26X3 O-RING	DM-FHFV-002-22	1
23	ROLLER BEARING OF PISTON SHAFT	DM-FHFV-002-23	1
24	M10 FLEXIBLE NUT	DM-FHFV-002-24	1
25	PLANE GASKET	DM-FHFV-002-25	1
26	FIXING PIN	DM-FHFV-002-26	1
27	M8 NUT	DM-FHFV-002-27	1
28	FILLING NOZZLE SEAL	DM-FHFV-002-28	1
29	NIPPLE	DM-FHFV-002-29	1
30	SHAFT SPRING	DM-FHFV-002-30	1
31	CLACK SPRING	DM-FHFV-002-31	1

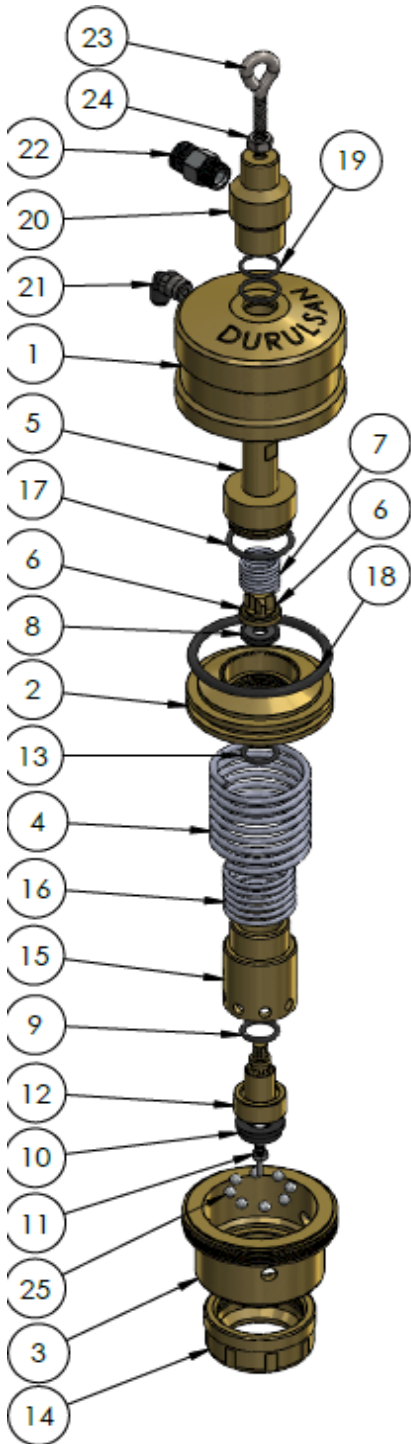


## FILLING HEAD TYPE PISTON

PRODUCT CODE: DM-FHP-xxx

NO	PART NAME	PART CODE	UNIT
1	CENTERING PART	DM-FHP-112-1	1
2	PISTON SEAL	DM-FHP-112-2	1
3	26X3 O-RING	DM-FHP-112-3	1
4	CENTERING FRONT COVER PART	DM-FHP-112-4	1
5	HEAD MOTION SPRING	DM-FHP-112-5	1
6	SPINDLE	DM-FHP-112-6	1
7	PISTON BEARING	DM-FHP-112-7	1
8	CLACK	DM-FHP-112-8	1
9	PISTON	DM-FHP-112-9	1
10	SET SCREW M5	DM-FHP-112-10	2
11	PORT SEAL	DM-FHP-112-11	1
12	CLACK SEAL	DM-FHP-112-12	1
13	MAIN BODY	DM-FHP-112-13	1
14	13X2.5 O-RING	DM-FHP-112-14	1
15	Ø14 MM BALL	DM-FHP-112-15	1
16	BALL SPRING	DM-FHP-112-16	1
17	25X3 O-RING	DM-FHP-112-17	1
18	CONNECTION NIPPLE	DM-FHP-112-18	1
19	BALL BEARING	DM-FHP-112-19	1





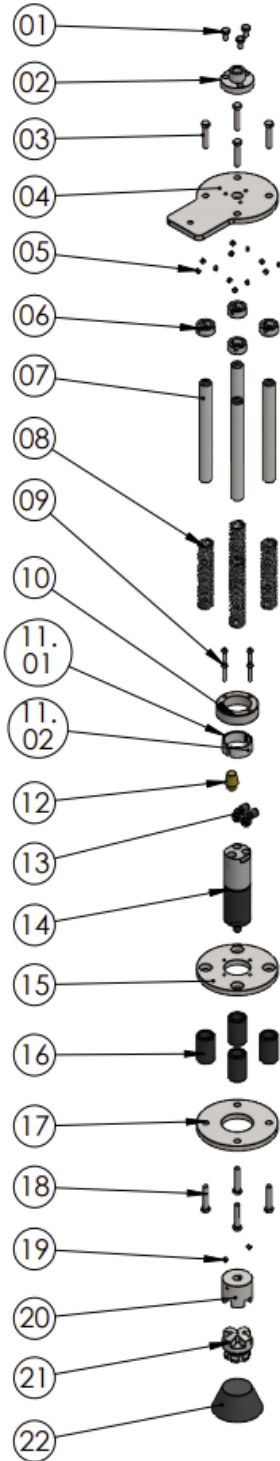
## FILLING HEAD TYPE FLANGED

PRODUCT CODE: DM-FHF-xxx

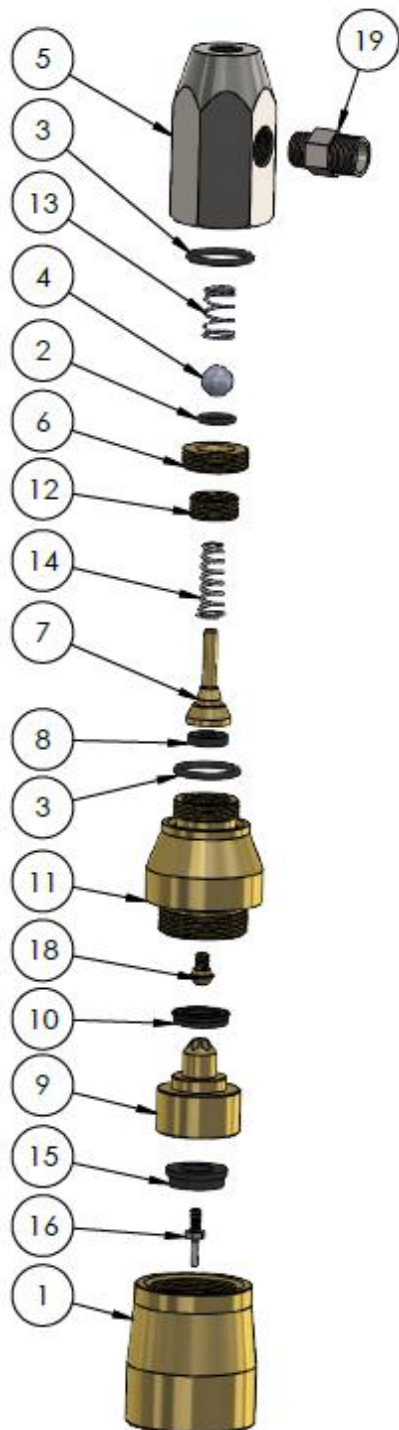
NO	PART NAME	PART CODE	UNIT
1	AIR PASSAGE BEARING	DM-FHF-003-1	1
2	GAS PASSAGE PISTON	DM-FHF-003-2	1
3	BEARING COVER OF AIR PASSAGE PISTON	DM-FHF-003-3	1
4	GAS PASSAGE PISTON SPRING	DM-FHF-003-4	1
5	GAS PASSAGE PISTON SHAFT	DM-FHF-003-5	1
6	CLACK	DM-FHF-003-6	1
7	CLACK SPRING	DM-FHF-003-7	1
8	CALCK WASHER	DM-FHF-003-8	1
9	17x3 O-RING	DM-FHF-003-9	1
10	FILLING GASKET	DM-FHF-003-10	1
11	CLACK SPINDLE	DM-FHF-003-11	1
12	CLACK BEARING BOTTOM BODY	DM-FHF-003-12	1
13	17x2.5 O-RING	DM-FHF-003-13	1
14	FLANGET NUT	DM-FHF-003-14	1
15	BALL BEARING	DM-FHF-003-15	1
16	CLACK BEARING PRESSURE SPRING	DM-FHF-003-16	1
17	33x3 O-RING	DM-FHF-003-17	1
18	72,4x5,33 O-RING	DM-FHF-003-18	1
19	20x2 O-RING	DM-FHF-003-19	2
20	GAS INLET BODY	DM-FHF-003-20	1
21	1_4x6mm ELBOW	DM-FHF-003-21	1
22	NIPPLE	DM-FHF-003-22	1
23	HANGER	DM-FHF-003-23	1
24	M8 NUT	DM-FHF-003-24	1
25	6,35 BALL	DM-FHF-003-25	8

## FILLING HEAD TYPE VALVE

PRODUCT CODE: DM-FHV-xxx



NO	PART NAME	PART CODE	QTY
01	HEX SCREW(M8)	DM-FHV-XXX.01	3
02	PISTON COUPLING	DM-FHV-XXX.02	1
03	HEX BOLT(M6)	DM-FHV-XXX.03	4
04	TOP SHEET	DM-FHV-XXX.04	1
05	SOCKET SET SCREW(M8)	DM-FHV-XXX.05	12
06	SPRING SET PART	DM-FHV-XXX.06	4
07	SHAFT	DM-FHV-XXX.07	4
08	HEAD SPRING	DM-FHV-XXX.08	4
09	SCREW(M5)	DM-FHV-XXX.09	4
10	BEARING(6015)	DM-FHV-XXX.10	1
11.01	CONICAL PART	DM-FHV-XXX.11.01	1
11.02	CONICAL PART	DM-FHV-XXX.11.02	1
12	SILENCER	DM-FHV-XXX.12	1
13	FITTINGS	DM-FHV-XXX.13	2
14	AIR MOTOR	DM-FHV-XXX.14	1
15	MIDDLE SHEET	DM-FHV-XXX.15	1
16	SUPPORT BLOCK	DM-FHV-XXX.16	4
17	BOTTOM SHEET	DM-FHV-XXX.17	1
18	HEX BOLT(M8)	DM-FHV-XXX.18	4
19	SOCKET SET SCREW(M8)	DM-FHV-XXX.19	2
20	TOP AIR JOINT	DM-FHV-XXX.20	1
21	BOTTOM AIR JOINT	DM-FHV-XXX.21	1
22	CLUTCH	DM-FHV-XXX.22	1

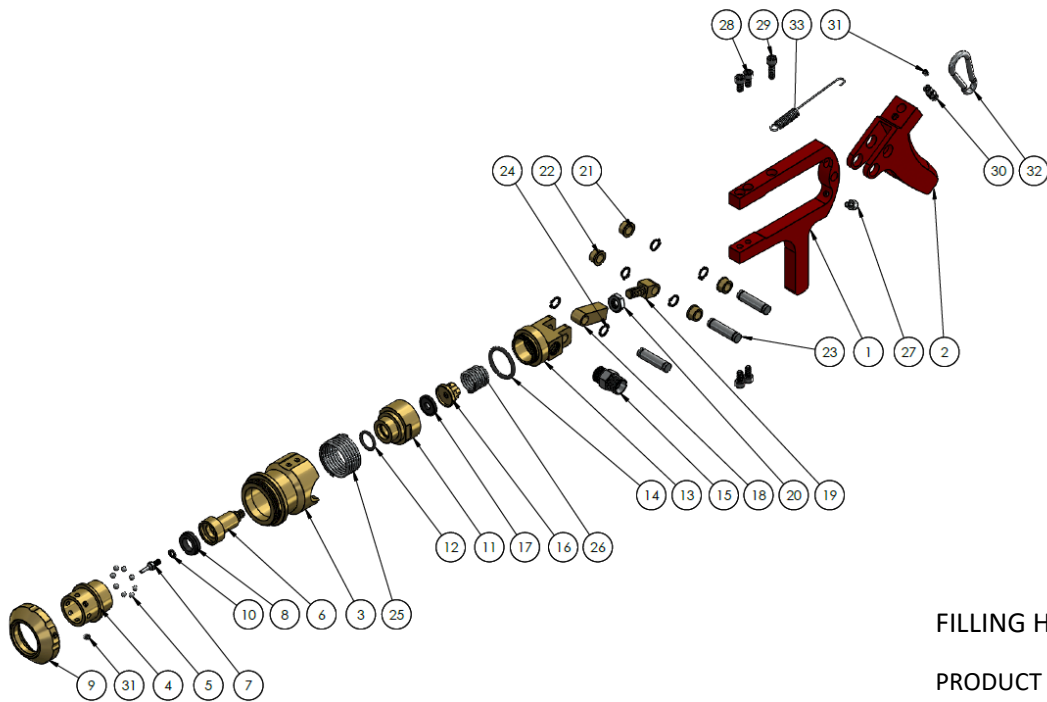


## FILLING HEAD TYPE JUMBO

PRODUCT CODE: DM-FHJ-xxx

NO	PART NAME	PART CODE	UNIT
1	BOTTOM BODY	DM-FHJ-002-1	1
2	13X2.50 O-RING	DM-FHJ-002-2	1
3	25X3.00 O-RING	DM-FHJ-002-3	2
4	Ø14 MM BALL	DM-FHJ-002-4	1
5	MAIN BODY	DM-FHJ-002-5	1
6	BALL BEARING	DM-FHJ-002-6	1
7	CLACK	DM-FHJ-002-7	1
8	CLACK SEAL	DM-FHJ-002-8	1
9	PISTON	DM-FHJ-002-9	1
10	PISTON BEARING SEAL	DM-FHJ-002-10	1
11	PISTON BEARING	DM-FHJ-002-11	1
12	SPRING PRESSURE NUT	DM-FHJ-002-12	1
13	BALL SPRING	DM-FHJ-002-13	1
14	CLACK PRESSURE SPRING	DM-FHJ-002-14	1
15	FILLING SEAL	DM-FHJ-002-15	1
16	SPINDLE	DM-FHJ-002-16	1
17	37X3.00 O-RING	DM-JTFH-002-17	1
18	FIXING SCREW OF CLACK SEAL	DM-FHJ-002-18	1
19	NIPPLE	DM-FHJ-002-19	1





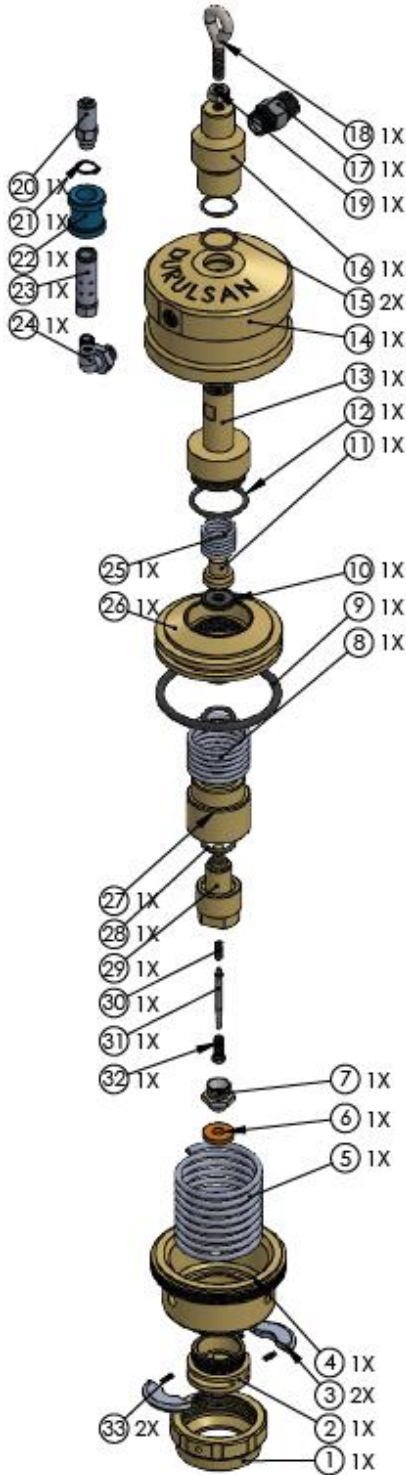
FILLING HEAD TYPE MECHANIC

PRODUCT CODE: DM-FHM-xxx

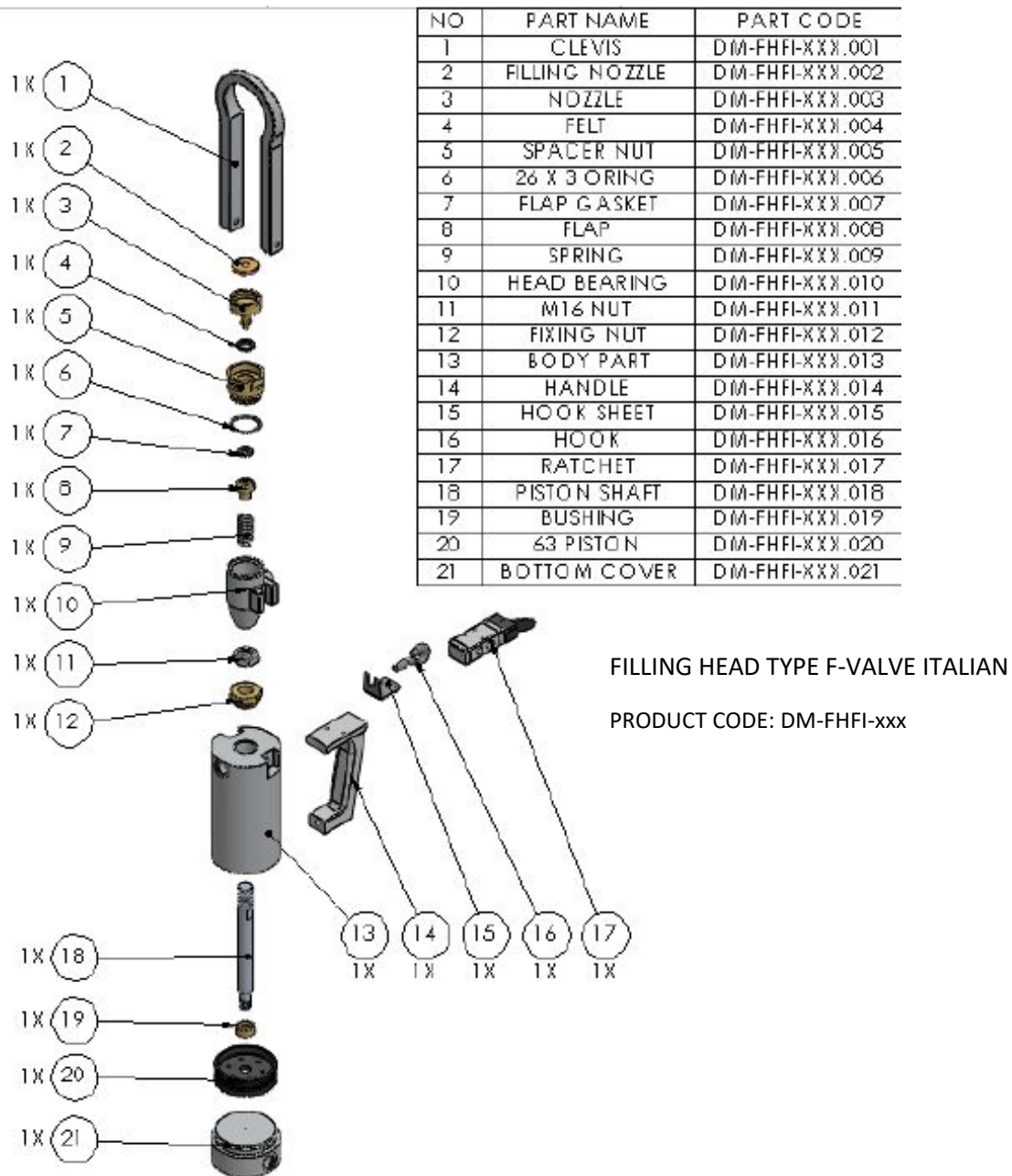
No	PART NAME	PART CODE	UNIT
1	HANDLE	DM-FHM-212-1	1 PIECE
2	DETENT	DM-FHM-212-2	1 PIECE
3	MAIN BODY	DM-FHM-212-3	1 PIECE
4	BALL BEARING BODY	DM-FHM-212-4	1 PIECE
5	COUPLING BALL BEARING	DM-FHM-212-5	6 PIECES
6	PISTON	DM-FHM-212-6	1 PIECE
7	SPINDLE	DM-FHM-212-7	1 PIECE
8	PORT SEAL	DM-FHM-212-8	1 PIECE
9	PORT NUT	DM-FHM-212-9	1 PIECE
10	WASHER	DM-FHM-212-10	1 PIECE
11	BALL BEARING MOTION BAR BOTTOM BODY	DM-FHM-212-11	1 PIECE
12	O-RING 17x2.5	DM-FHM-212-12	1 PIECE
13	BALL BEARING MOTION BAR	DM-FHM-212-13	1 PIECE
14	O-RING 29.75x3.5	DM-FHM-212-14	1 PIECE
15	HOSE CONNECTION NIPPLE	DM-FHM-212-15	1 PIECE
16	CLACK	DM-FHM-212-16	1 PIECE
17	CLACK SEAL	DM-FHM-212-17	1 PIECE
18	BEARING HANDLE BOTTOM BODY	DM-FHM-212-18	1 PIECE
19	BEARING HANDLE TOP BODY	DM-FHM-212-19	1 PIECE
20	BEARING HANDLE NUT M10x1.5	DM-FHM-212-20	1 PIECE
21	BUFFER RING 1	DM-FHM-212-21	2 PIECES
22	BUFFER RING 2	DM-FHM-212-22	2 PIECES
23	SHAFT	DM-FHM-212-23	3 PIECES
24	SHAFT SEGMAN	DM-FHM-212-24	6 PIECES
25	SPRING (Length:55 - Ø40 - Pitch:10 - Thickness:3)	DM-FHM-212-25	1 PIECE
26	SPRING (Length:31 - Ø23 - Pitch:5 - Thickness:2.2)	DM-FHM-212-26	1 PIECE
27	BOLT M 6x1 - 7mm	DM-FHM-212-27	1 PIECE
28	BOLT M 6x1 - 20mm	DM-FHM-212-28	4 PIECES
29	BOLT M 6x1 - 12mm	DM-FHM-212-29	1 PIECE
30	SPRING FIXING BOLT (SPECIAL)	DM-FHM-212-30	1 PIECE
31	SET SCREW M 5x0.8	DM-FHM-212-31	2 PIECES
32	CARABINER	DM-FHM-212-32	1 PIECE
33	SPRING (Length:17 - Ø10 - Pitch:1.2 - Thickness:1.2)	DM-FHM-212-33	1 PIECE

## FILLING HEAD TYPE FLANGED ITALIAN

PRODUCT CODE: DM-FHI-xxx

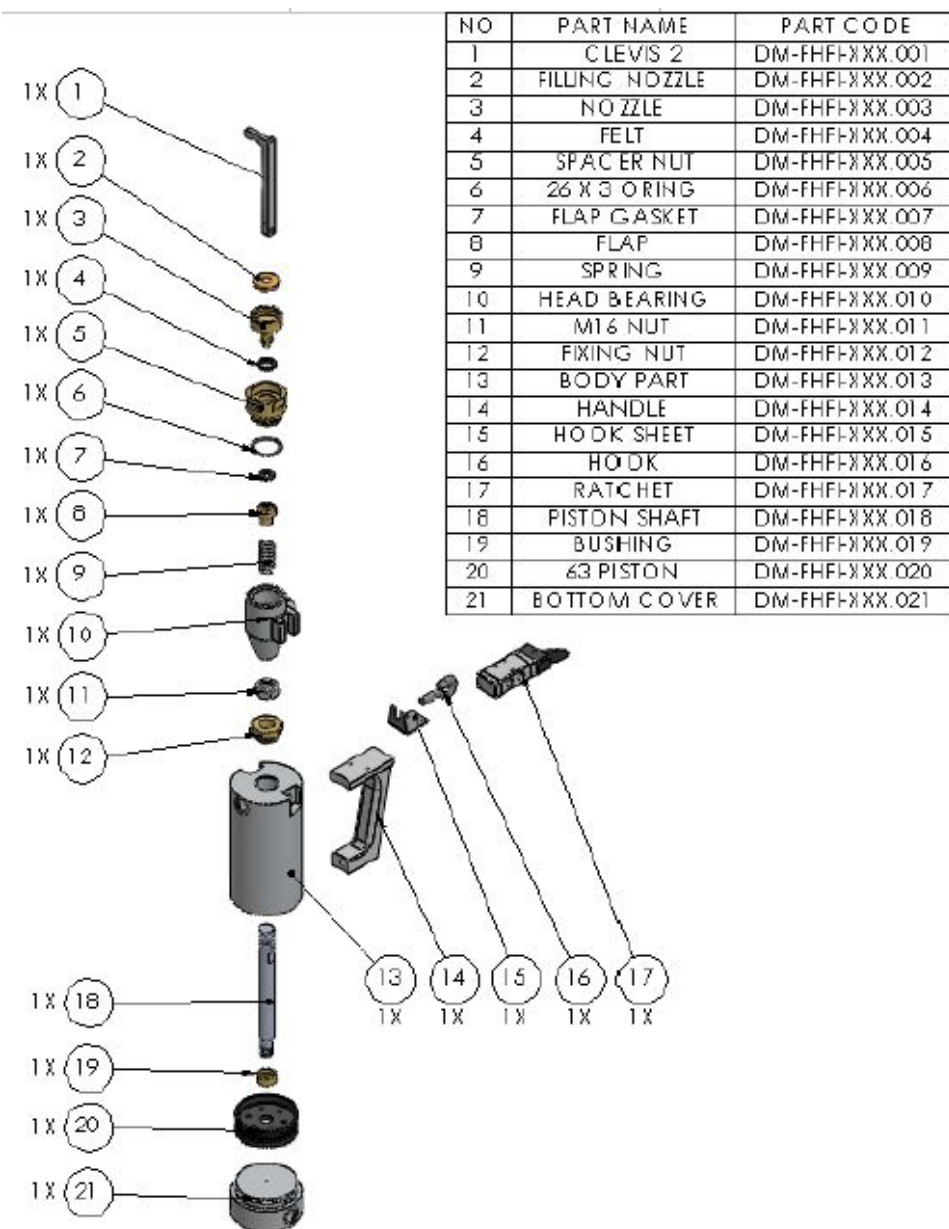


NO	PART NAME	PART NO	UNIT
1	CLAW NUT	DM-FHI-003-1	1
2	CLAW BEARING	DM-FHI-003-2	1
3	CLAW	DM-FHI-003-3	2
4	BEARING COVER OF AIR PASSAGE PISTON	DM-FHI-003-4	1
5	GAS PASSAGE PISTON SPRING	DM-FHI-003-5	1
6	FILLING NOZZLE GASGET	DM-FHI-003-6	1
7	FILLING NOZZLE CHROME	DM-FHI-003-7	1
8	CLACK BEARING PRESSURE SPRING	DM-FHI-003-8	1
9	72,4X5,33 ORING	DM-FHI-003-9	1
10	CLACK WASHER	DM-FHI-003-10	1
11	CLACK	DM-FHI-003-11	1
12	33X3 ORING	DM-FHI-003-12	1
13	GAS PASSAGE PISTON SHAFT	DM-FHI-003-13	1
14	AIR PASSAGE BEARING	DM-FHI-003-14	1
15	20X2 ORING	DM-FHI-003-15	2
16	GAS INLET BODY	DM-FHI-003-16	1
17	NIPPLE	DM-FHI-003-17	1
18	HANGER	DM-FHI-003-18	1
19	M8 NUT	DM-FHI-003-19	1
20	PNEUMATIC FITTING 1	DM-FHI-003-20	1
21	RETAINING RING	DM-FHI-003-21	1
22	MOVEMENT PART	DM-FHI-003-22	1
23	PNEUMATIC MILL	DM-FHI-003-23	1
24	PNEUMATIC ELBOW	DM-FHI-003-24	1
25	CLACK BEARING PRESSURE SPRING	DM-FHI-003-25	1
26	GAS PASSAGE PISTON	DM-FHI-003-26	1
27	PISTON BEARING	DM-FHI-003-27	1
28	17X3 ORING	DM-FHI-003-28	1
29	CLACK BEARING BOTTOM BODY	DM-FHI-003-29	1
30	NEEDLE SPRING	DM-FHI-003-30	1
31	FILLING NEEDLE	DM-FHI-003-31	1
32	NEEDLE GRIPPER	DM-FHI-003-32	1
33	CLAW SPRING	DM-FHI-003-33	2



## FILLING HEAD TYPE F-VALVE ITALIAN-2

PRODUCT CODE: DM-FHFI-xxx



## 9-MAINTENANCE OF PRODUCT

- The things to be done for the maintenance of DM series filling heads are described below.
- Parts such as gaskets, seals, and O-rings inside the heads may require maintenance over time.
- The time needed for maintenance varies according to the frequency of use and the hardness of use.
- After the parts in need of maintenance are identified, our company is notified and spare parts coverage is provided.
- After the parts are procured, you can change them in your own company or change them in our company.
- If there are problems such as abrasion and crushing in the part, you can send the part to our company for maintenance and part replacement.
- Maintenance is needed between 6 months and 1 year, depending on the usage situation.

Possible Problems	Solutions
Gasket Leak	Exchange the gasket with a new part
Seal Leak	Exchange the seal with a new part
O-ring Leakage	Exchange the O-ring with a new part
Needle Breakage	Exchange the needle with a new part