

## RACCORDS CASSANTS

### RCA20-450 :

3/4" NPT Femelle x Femelle

### RCA20G450 :

3/4" Pas de gaz

Composé de 2 demi parties identiques comprenant chacune un clapet Rep. (3) en appui sur un ressort Rep. (5).

Chacune des 2 demi parties est montée dans un tube Rep. (1) comportant une amorce de rupture.

Avant rupture : Les clapets en appui l'un contre l'autre, sont ouverts, ce qui permet le passage du produit (passage possible dans les 2 sens).

En cas de rupture : Les clapets n'ayant plus d'appui, se ferment de chaque côté sous l'action des ressorts Rep. (5).

## BREAKAWAY COUPLINGS

### RCA20-450 :

3/4" NPT Female x Female

### RCA20G450 :

3/4" Gas thread

This coupling is made of 2 identical valves.

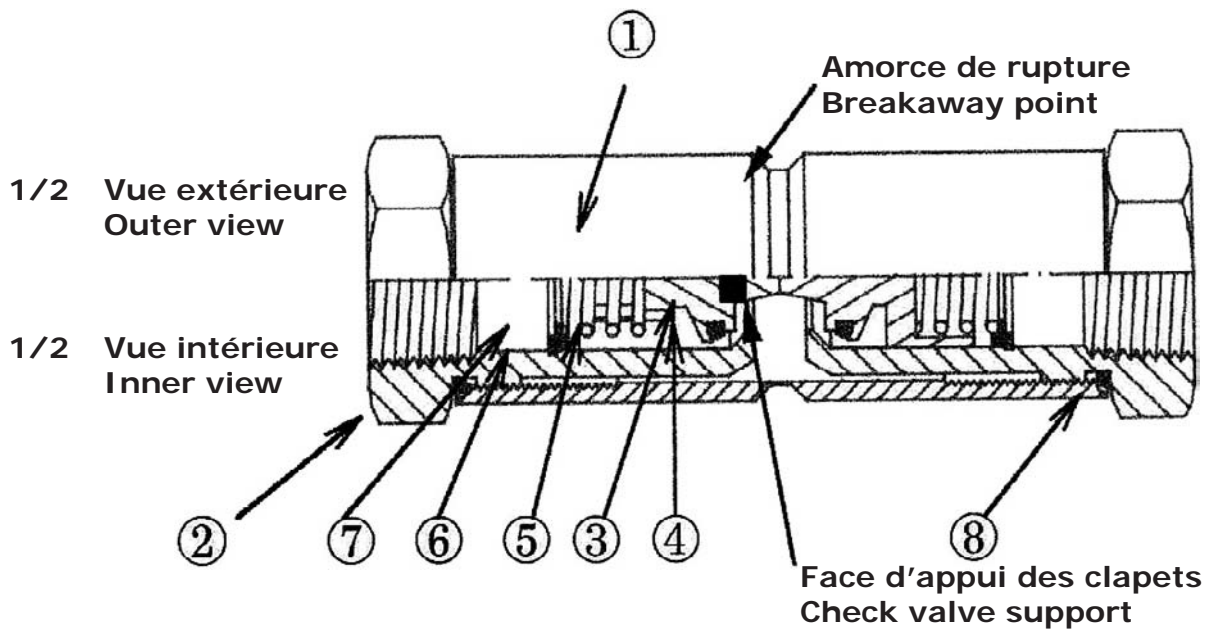
Each half comprises : 1 check valve item (3) supported by a spring item (5).

Each half is mounted into a tube item (1) that includes a breakaway point.

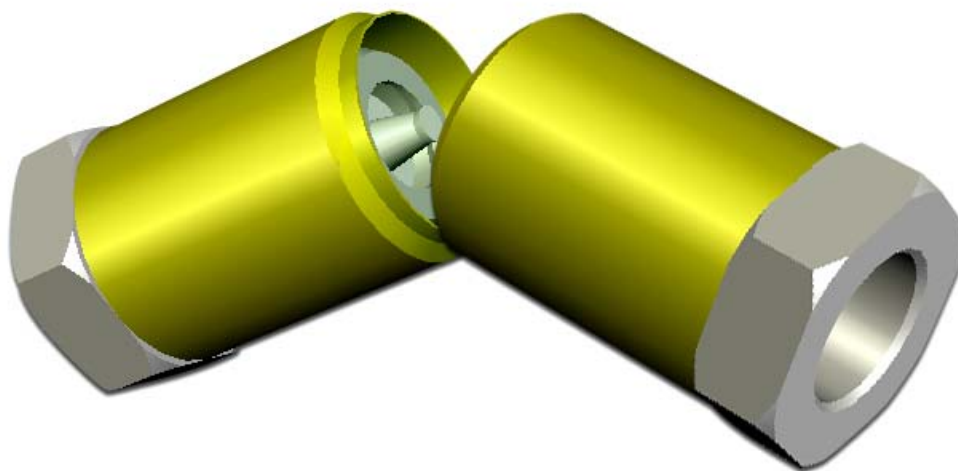
Before breaking : The 2 check valves, supported one by the other, are open, allowing the product to flow (flow is possible in both ways).

In case of breaking : The check valves, having no more support, close on each side, owing to the springs item (5).





- |   |                             |                   |
|---|-----------------------------|-------------------|
| 1 | Tube avec amorce de rupture | Tube w/breaking   |
| 2 | Raccord taraudé 3/4"        | Threaded coupling |
| 3 | Clapet                      | Check valve       |
| 4 | Joint de clapet             | Check valve seal  |
| 5 | Ressort                     | Spring            |
| 6 | Rondelle de ressort         | Spring washer     |
| 7 | Circlips                    | Shaft retainer    |
| 8 | Joint torique de corps      | O'ring            |



Rupture du raccord cassant RCA20-450