

RACCORDS ACME

ACME COUPLINGS

Série ACME Mâle x NPT Mâle

:

Construction : Acier ou acier basse température (ou inox sur demande)

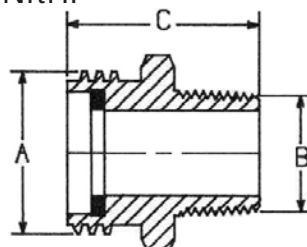
Joint : Nitrile



ACME Male x NPT Male Series :

Construction : Steel or low temperature steel (or stainless steel on request)

Gasket : Nitril



| REFERENCE NUMBER | A ACME Mâle / Mâle mm | | B NPT Mâle / Mâle | C LONGUEUR LENGHT mm | CONSTRUCTION |
|------------------|-----------------------------|----|-------------------------|----------------------------|-------------------------------|
| RD80 | 1"1/4 | 32 | 1/2" | 50 | ACIER / STEEL |
| RD81 | | | 3/4" | | ACIER / STEEL |
| RD79 | 1"3/4 | 44 | 1/2" | 50 | ACIER / STEEL |
| RD82-350 | | | 3/4" | | ACIER BASSE T° / LOW T° STEEL |
| RD83-350 | | | 1" | 53 | ACIER BASSE T° / LOW T° STEEL |
| RD84 | | | 1"1/4 | 53 | ACIER / STEEL |
| RD85 | 2"1/4 | 57 | 1"1/4 | 52 | ACIER / STEEL |
| RD88-350 | 3"1/4 | 82 | 2" | 62 | ACIER BASSE T° / LOW T° STEEL |

Série ACME Mâle x à souder sch 40 :

Construction : Acier ou acier basse température (ou inox sur demande)

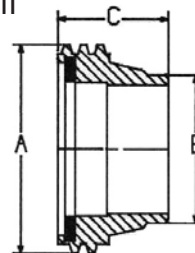
Joint : Nitrile



ACME Male x butt weld sch 40 :

Construction : Steel or low temperature steel (or stainless steel on request)

Gasket : Nitril



| REFERENCE NUMBER | A ACME Mâle / Mâle mm | | B POUR TUYAUTERIE FOR PIPE | C LONGUEUR LENGHT mm | CONSTRUCTION |
|------------------|-----------------------------|----|----------------------------------|----------------------------|-------------------------------|
| RD19 | 1"3/4 | 44 | 1" | 40 | ACIER / STEEL |
| RD19-350 | | | | | ACIER BASSE T° / LOW T° STEEL |
| RD90-350 | 2"1/4 | 56 | 2" | 50 | ACIER BASSE T° / LOW T° STEEL |
| RD20 | 3"1/4 | 82 | 2" | 45 | ACIER / STEEL |
| RD20-350 | | | | | ACIER BASSE T° / LOW T° STEEL |
| RD27-350 | | | | 3" | 55 |

RACCORDS ACME

ACME COUPLINGS

Série ACME Mâle x ACME Mâle :

Construction : Acier ou acier basse température

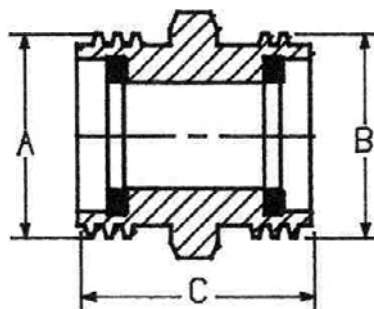
Joint : Nitrile



ACME Male x ACME Male Series :

Construction : Steel or low temperature steel

Gasket : Nitril



| REFERENCE NUMBER | A ACME Mâle / Mâle mm | | B BRIDE FLANGE | | C LONGUEUR LENGHT mm | CONSTRUCTION |
|------------------|-----------------------|----|----------------|----|----------------------|-------------------------------|
| | | | | | | |
| RD29 | 1" 1/4 | 32 | 1" 1/4 | 32 | 50 | ACIER / STEEL |
| RD30-350 | 1" 3/4 | 44 | 1" 3/4 | 44 | 50 | ACIER BASSE T° / LOW T° STEEL |
| RD32-350 | 3" 1/4 | 82 | 3" 1/4 | 82 | 90 | ACIER BASSE T° / LOW T° STEEL |

Série ACME Mâle x Bride :

Construction : Acier

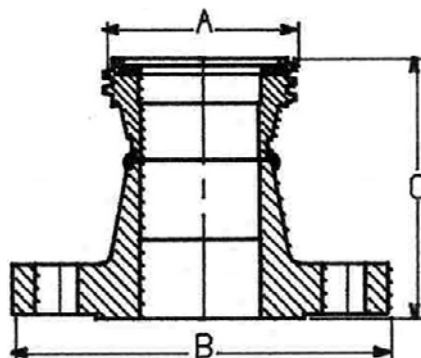
Joint : Nitrile



ACME Male x Flange series :

Construction : Steel

Gasket : Nitril



| REFERENCE NUMBER | A ACME Mâle / Mâle mm | | B BRIDE FLANGE | C LONGUEUR LENGHT mm |
|------------------|-----------------------|----|----------------|----------------------|
| | | | | |
| RD21 | 3" 1/4 | 82 | 2" PN25 | 110 |
| RD21A | | | 3" PN50 | 115 |
| RD21M | | | 2" PN40/PN50 | 115 |
| RD24 | | | 3" PN25 | 120 |
| RD24A | | | 3" PN50 | 135 |

RACCORDS ACME

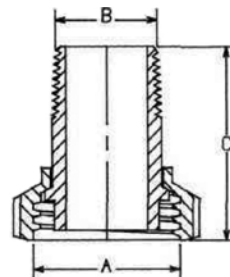
ACME COUPLINGS

Série ACME Femelle x NPT
Mâle :

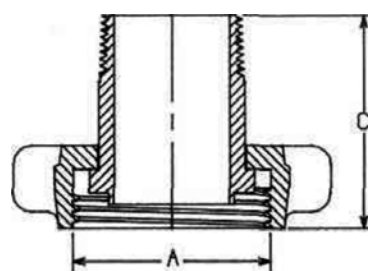
ACME Female x NPT Male
Series :



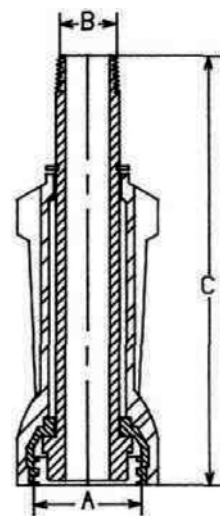
Style A



Style B



Style C



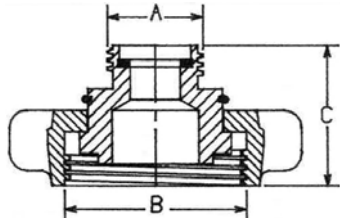
| REFERENCE NUMBER | STYLE | CONSTRUCTION | A ACME Femelle / Female | B NPT Mâle / Male | C LONGUEUR LENGHT mm |
|------------------|-------|---------------|-------------------------------|-------------------------|----------------------------|
| RD38A | A | ACIER / STEEL | 1" 1/4 | 1/2" | 60 |
| RD36 | | | | 3/4" | |
| RD39 | | 1" 3/4 | 1" | | |
| RD40 | | | 185 | | |
| RD40A | C | ACIER / STEEL | 2" 1/4 | 1" 1/4 | 80 |
| RD37 | A | | | 3" 1/4 | |
| RD41 | B | | 1" 1/2 | | 90 |
| RD42 | | | | | |
| RD43 | | | | | |

RACCORDS ACME

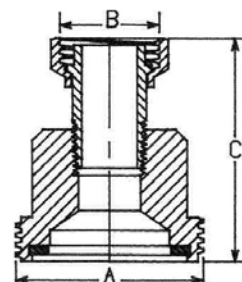
ACME COUPLINGS

Série ACME Femelle x ACME
Mâle :

ACME Female x ACME Male
Series :



RD50-350



RD55-350

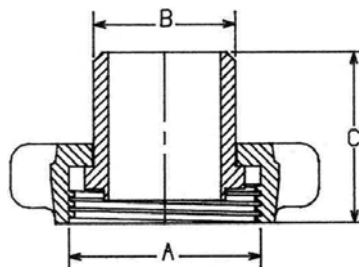
| REFERENCE NUMBER | A ACME Mâle / Male mm | | B ACME Femelle / Female mm | C LONGUEUR LENGHT mm | CONSTRUCTION |
|------------------|--------------------------------|----|-------------------------------------|-------------------------------|----------------------------------|
| | | | | | |
| RD50-350 | 1"3/4 | 44 | 3"1/4 | 65 | ACIER BASSE T° / LOW T° STEEL |
| RD55-350 | 3"1/4 | 82 | 1"3/4 | | ACIER BASSE T° / LOW T° STEEL |
| RD51 | 2"1/4 | 58 | 3"1/4 | 65 | ACIER / STEEL |

Série ACME Femelle x à
souder sch 40 :

ACME Female x butt weld
series :



RD23-350



| REFERENCE NUMBER | A ACME Femelle mm | B POUR TUYAUTERIE FOR PIPE | C LONGUEUR LENGHT mm | CONSTRUCTION |
|------------------|----------------------------|-------------------------------------|-------------------------------|----------------------------------|
| RD40S | 1"3/4 | 1" | 40 | ACIER / STEEL |
| RD40S-350 | | | | ACIER BASSE T° / LOW T° STEEL |
| RD23 | 3"1/4 | 2" | 80 | ACIER / STEEL |
| RD23-350 | | | | ACIER BASSE T° / LOW T° STEEL |
| RD23I | | | | INOX / STAINLESS STEEL |
| RD23IA | | | | INOX et ACIER / SS and STEEL |

JOINTS BOUCHONS ACME GASKETS ACME CAPS

Bouchons ACME :

Caps ACME :

| ACME | BOUCHON MALES / MALE CAPS | | | | BOUCHONS FEMELLE / FEMALE CAPS | | | |
|--------|---------------------------|------------------------|-------|--------------|--------------------------------|------------------------|-------|--------------|
| | ACIER STEEL | ACIER BT° LOW T° STEEL | NYLON | LAITON BRASS | ACIER STEEL | ACIER BT° LOW T° STEEL | NYLON | LAITON BRASS |
| 1" 1/4 | / | / | RD70 | / | RD53 | / | RD74 | / |
| 1" 3/4 | / | / | RD71 | RD61L | RD66A | / | RD75 | RD66 |
| 2" 1/4 | / | / | RD72 | / | RD67 | / | / | / |
| 3" 1/4 | RD63 | RD63-350 | RD73 | / | RD68 | / | / | RD68L |



Joints :

Gaskets :

| ACME | REFERENCE NUMBER | TYPE JOINTS / GASKETS |
|--------|------------------|---------------------------------|
| 1" 1/4 | 11820 | PLAT NITRILE / NITRIL FLAT DISC |
| 1" 3/4 | 11821 | |
| 2" 1/4 | 11823 | |
| 3" 1/4 | 11824 | TORIQUE NITRILE / NITRIL O RING |
| | 11825 | |
| | 11825T | TORIQUE TEFLON / TEFLON O RING |

