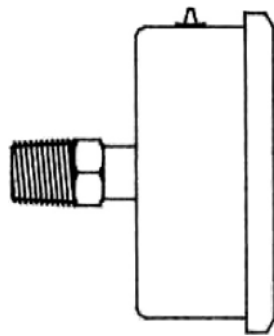


MANOMETRES

PRESSURE GAUGES

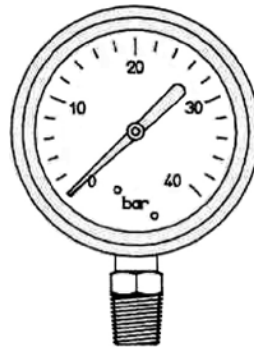
Prise arrière
Back connection

PA



Prise verticale
Vertical connection

PV



Bain de glycérine

Boîtier : Inox

Raccordement : mâle 1/4"
ou 1/2" NPT

Diamètre : 40, 63 ou 100 mm
(autres sur demande)

Echelles : 0-4 Bar, 0-10 Bar, 0-16
Bar, 0-25 Bar, 0-40 Bar, 0-60 Bar
(autres sur demande)

Body : Stainless steel

Connections : male 1/4"
or 1/2" NPT

Diameter : 40, 63 or 100 mm (other
on request)

Ranges : 0-4 Bar, 0-10 Bar, 0-16 Bar,
0-25 Bar, 0-40 Bar, 0-60 Bar (other
on request)

REFERENCE NUMBER	Ø mm	PRISE TYPE CONNECTION	RACCORDEMENT NPT	ECHELLE BAR	CONSTRUCTION *
40A640	40	PA	1/4"	0 - 40	INOX LAITON / SS BRASS
4A663		PA		0 - 4	
4V663		PV		0 - 10	
10A663		PA			
10V663		PV		0 - 16	
16A663		PA			
16V663		PV		0 - 25	
25A663		PA			
25V663		PV		0 - 40	
40A663		PA			
40V663		PV		0 - 60	
60A663		PA			
60V663		PV			
10V15100		100		PV	
16V15100	0 - 16				
25V15100	0 - 25				
40V15100	0 - 40				

* : Existe en version tout inox.

Ajouter "I" à la référence choisie

* : For all stainless steel construction.

Add "I" to the chosen reference number

MANOMETRE ETALONNES RACCORDES COFRAC CALIBRATED PRESURE GAUGES

REFERENCE NUMBER	Ø mm	PRISE TYPE CONNECTION	RACCORDEMENT NPT	ECHELLE BAR	CONSTRUCTION
25A663I-E	63	PA	1/4"	0 - 25	STAINLESS STEEL
25V663I-E		PV			

MANOMETRE ETALONNES COFRAC * COFRAC CALIBRATED PRESURE GAUGES *

REFERENCE NUMBER	Ø mm	PRISE TYPE CONNECTION	RACCORDEMENT NPT	ECHELLE BAR	CONSTRUCTION
25A663ICO	63	PA	1/4"	0 - 25	STAINLESS STEEL
25V663ICO		PV			

* : Nous consulter.

* : On request.