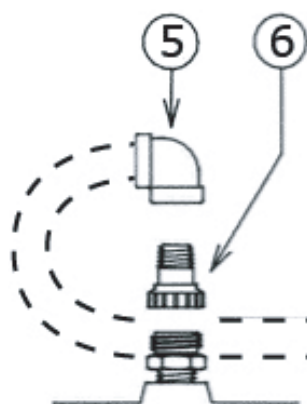


BORNES DE DEPOTAGE

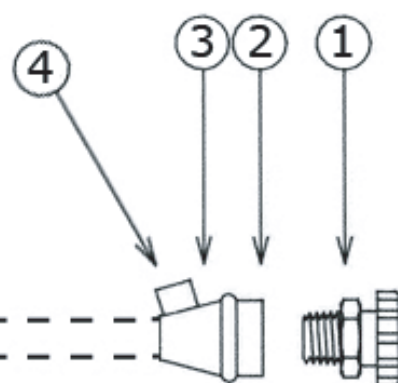
KITS FOR FILLER VALVE
DISPLACED

Série DV325 :

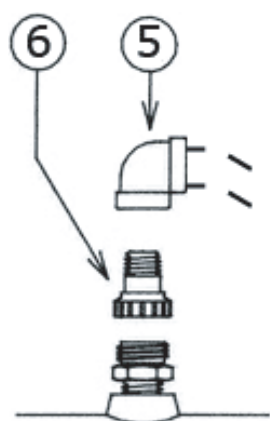


Citerne / Tank

DV325 Series :

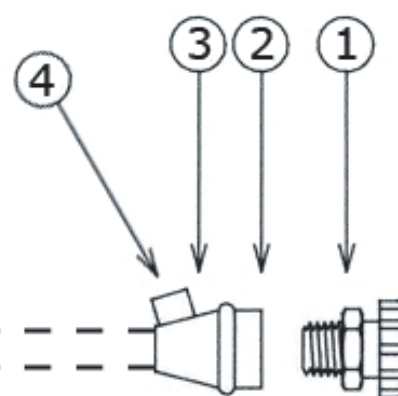
Tube acier 1" tarif III sans soudure non fourni par EQF

Série DV232 :



Citerne / Tank

DV232 Series :

Tube acier 1" tarif III sans soudure non fourni par EQF

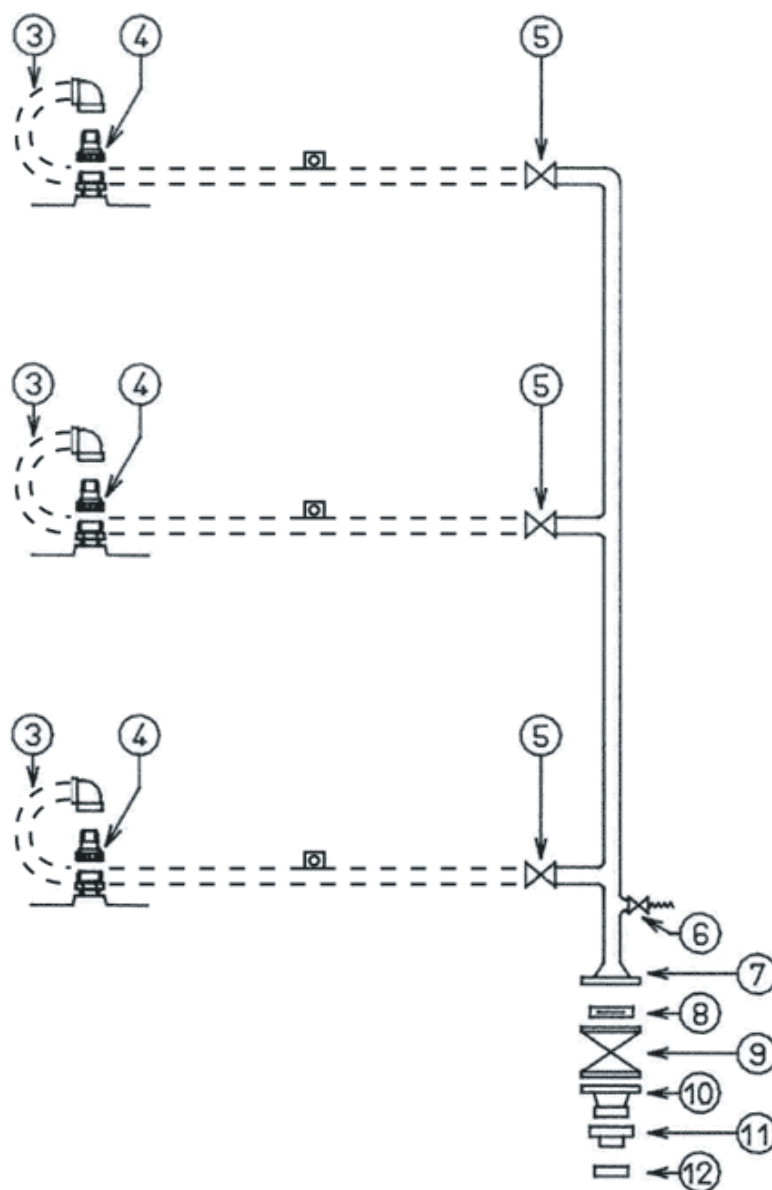
DESIGNATION	REP	REFERENCE NUMBER	DESCRIPTION
DOUBLE CLAPET DE REMPLISSAGE	1	VRN20	DOUBLE CHECK FILLER VALVE
REDUCTION ACIER	2	DV324-1	COUPLING
REDUCTION 2" X 1"	3	R5025	REDUCTION 2" X 1"
PLAQUETTE LAITON	4	DVP	BRASS PLATE
COUDE F 1" X F 1"	5	CFF25	CURVE F 1" X F 1"
ADAPTEUR LAITON	6	RD40	FILLING CONNECTOR

BORNES DE DEPOTAGE

KITS FOR FILLER VALVE
DISPLACED

Borne de dépotage pour raccordement de plusieurs citernes.

One filler valve to connect several tanks.



Tube acier basse température 1" sans soudure non fourni par EQF

DESIGNATION	REP	REFERENCE NUMBER	DESCRIPTION
RACCORD ACIER	3	DV323	ELBOW ADAPTOR
ADAPTEUR LAITON	4	RD40	FILLING CONNECTOR
VANNE 1/4 TOUR ACIER A SOUDER 1"	5	ALFA2425S	BUTT WELD BALL VALVE 1"
SOUPAPE 1/4" AVEC 1/2 MANCHON 1/4"	6	3127P	RELIEF VALVE 1/4"
BRIDE A COLLERETTE PN50 DN50	7	BSC5050	WELDING NECK FLANGE PN50 DN50
ANTI RETOUR A DISQUE INOX 2"	8	ARD50	2" BACK CHECK VALVE
ROBINET 1/4 TOUR 2" SECURITE FEU	9	ALFA6050B	2" BALL VALVE SAFE FIRE
RACCORD M 3" 1/4 ACME + BRIDE PN50 2"	10	RD21M	COUPLING M 3" 1/4 ACME + FLANGE 2" PN50
RACCORD F 3" 1/4 ACME + M 1" 3/4 ACME	11	RD50	COUPLING F 3" 1/4 ACME + M 1" 3/4 ACME
BOUCHON LAITON F 1" 3/4 ACME	12	RD66	PLUG F 1" 3/4 ACME

RACCORDS ACME

ACME COUPLINGS

Série ACME Mâle x ACME Mâle :

Construction : Acier ou acier basse température

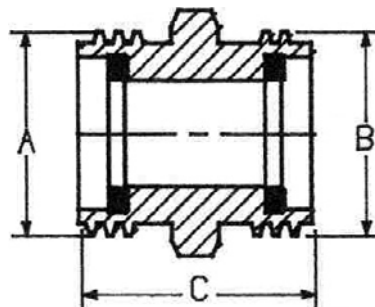
Joint : Nitrile



ACME Male x ACME Male Series :

Construction : Steel or low temperature steel

Gasket : Nitril



REFERENCE NUMBER	A ACME Mâle / Mâle mm		B BRIDE FLANGE		C LONGUEUR LENGHT mm	CONSTRUCTION
RD29	1" 1/4	32	1" 1/4	32	50	ACIER / STEEL
RD30-350	1" 3/4	44	1" 3/4	44	50	ACIER BASSE T° / LOW T° STEEL
RD32-350	3" 1/4	82	3" 1/4	82	90	ACIER BASSE T° / LOW T° STEEL

Série ACME Mâle x Bride :

Construction : Acier

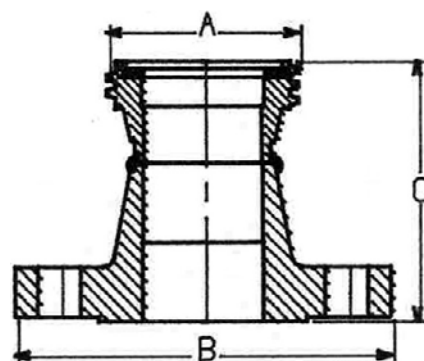
Joint : Nitrile



ACME Male x Flange series :

Construction : Steel

Gasket : Nitril



REFERENCE NUMBER	A ACME Mâle / Mâle mm		B BRIDE FLANGE	C LONGUEUR LENGHT mm
RD21	3" 1/4	82	2" PN25	110
RD21A			3" PN50	115
RD21M			2" PN40/PN50	115
RD24			3" PN25	120
RD24A			3" PN50	135

RACCORDS ACME

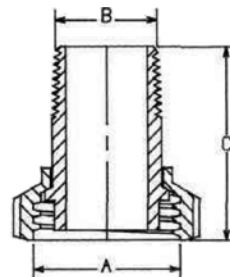
ACME COUPLINGS

Série ACME Femelle x NPT
Mâle :

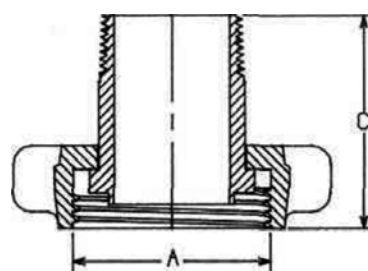
ACME Female x NPT Male
Series :



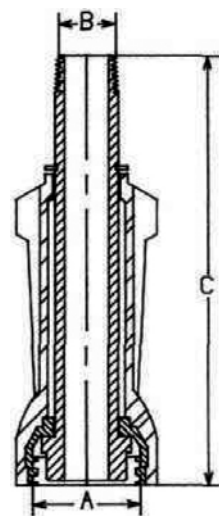
Style A



Style B



Style C

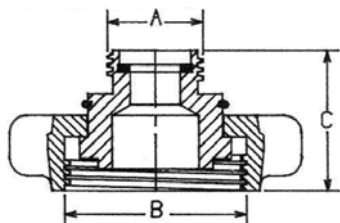


REFERENCE NUMBER	STYLE	CONSTRUCTION	A ACME Femelle / Female	B NPT Mâle / Male	C LONGUEUR LENGHT mm
RD38A	A	ACIER / STEEL	1" 1/4	1/2"	60
RD36				3/4"	
RD39		1" 3/4	1"		
RD40			185		
RD40A	C	ACIER / STEEL	2" 1/4	1" 1/4	80
RD37	A			3" 1/4	
RD41	B		1" 1/2		90
RD42					
RD43					

RACCORDS ACME

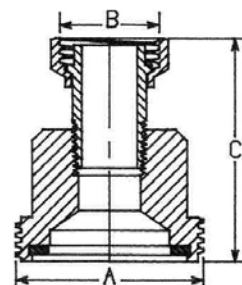
ACME COUPLINGS

Série ACME Femelle x ACME
Mâle :



RD50-350

ACME Female x ACME Male
Series :



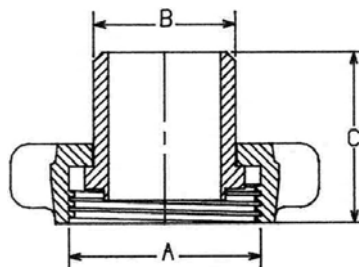
RD55-350

REFERENCE NUMBER	A ACME Mâle / Male mm		B ACME Femelle / Female mm	C LONGUEUR LENGHT mm	CONSTRUCTION
RD50-350	1"3/4	44	3"1/4	65	ACIER BASSE T° / LOW T° STEEL
RD55-350	3"1/4	82	1"3/4		ACIER BASSE T° / LOW T° STEEL
RD51	2"1/4	58	3"1/4	65	ACIER / STEEL

Série ACME Femelle x à
souder sch 40 :



RD23-350



ACME Female x butt weld
series :

REFERENCE NUMBER	A ACME Femelle mm	B POUR TUYAUTERIE FOR PIPE	C LONGUEUR LENGHT mm	CONSTRUCTION
RD40S	1"3/4	1"	40	ACIER / STEEL
RD40S-350				ACIER BASSE T° / LOW T° STEEL
RD23	3"1/4	2"	80	ACIER / STEEL
RD23-350				ACIER BASSE T° / LOW T° STEEL
RD23I				INOX / STAINLESS STEEL
RD23IA				INOX et ACIER / SS and STEEL

JOINTS BOUCHONS ACME GASKETS ACME CAPS

Bouchons ACME :

Caps ACME :

ACME	BOUCHON MALES / MALE CAPS				BOUCHONS FEMELLE / FEMALE CAPS			
	ACIER STEEL	ACIER BT° LOW T° STEEL	NYLON	LAITON BRASS	ACIER STEEL	ACIER BT° LOW T° STEEL	NYLON	LAITON BRASS
1" 1/4	/	/	RD70	/	RD53	/	RD74	/
1" 3/4	/	/	RD71	RD61L	RD66A	/	RD75	RD66
2" 1/4	/	/	RD72	/	RD67	/	/	/
3" 1/4	RD63	RD63-350	RD73	/	RD68	/	/	RD68L



Joints :

Gaskets :

ACME	REFERENCE NUMBER	TYPE JOINTS / GASKETS
1" 1/4	11820	PLAT NITRILE / NITRIL FLAT DISC
1" 3/4	11821	
2" 1/4	11823	
3" 1/4	11824	TORIQUE NITRILE / NITRIL O RING
	11825	TORIQUE NITRILE / NITRIL O RING
	11825T	TORIQUE TEFLON / TEFLON O RING



BRIDES

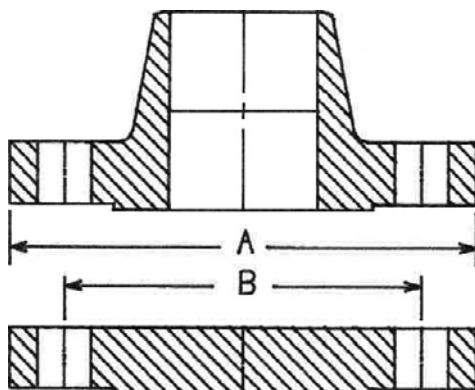
Toutes ces brides sont à face de joint surélevé.

(Brides à emboîtement femelle ou mâle sur demande).

Brides taraudées sur demande.

FLANGES

All these flanges are raised face.
(Male or female face on request).
Threaded flanges on request.



Brides à collerettes
Brides pleines

Welding neck flanges
Blind flanges

ISO PN25/40 :

Ø NOMINAL	REFERENCE		A mm	B mm	TROUS / HOLES		
	BRIDES A COLLERETTES WELDING NECK FLANGES	BRIDES PLEINES BLIND FLANGES			NOMBRE NUMBER	Ø mm	BOULONNERIE
DN10	BSC2510	BPP2510	90	60	4	14	M12
DN15	BSC2515	BPP2515	95	65	4	14	M12
DN20	BSC2520	BPP2520	105	75	4	14	M12
DN25	BSC2525	BPP2525	115	85	4	14	M12
DN32	BSC2532	BPP2532	140	100	4	18	M16
DN40	BSC2540	BPP2540	150	110	4	18	M16
DN50	BSC2550	BPP2550	165	125	4	18	M16
DN65	BSC2565	BPP2565	185	145	8	18	M16
DN80	BSC2580	BPP2580	200	160	8	18	M16
DN100	BSC25100	BPP25100	235	190	8	22	M20
DN125	BSC25125	BPP25125	270	220	8	26	M24
DN150	BSC25150	BPP25150	300	250	8	26	M24

ISO PN50 (ASA300) :

Ø NOMINAL	REFERENCE		A mm	B mm	TROUS / HOLES		
	BRIDES A COLLERETTES WELDING NECK FLANGES	BRIDES PLEINES BLIND FLANGES			NOMBRE NUMBER	Ø mm	BOULONNERIE
DN15	BSC5015 (Sch. 40)	BPP5015	95	66,7	4	15,8	M14
DN20	BSC5020 (Sch. 40)	BPP5020	117	82,6	4	19	M16
DN25	BSC5025 (Sch. 40)	BPP5025	124	88,9	4	19	M16
DN32	BSC5032 (Sch. 40)	BPP5032	133	98,4	4	19	M16
DN40	BSC5040 (Sch. 40)	BPP5040	156	114,3	4	22,2	M20
DN50	BSC5050 (Sch. 40)	BPP5050	165	127	8	19	M16
DN65	BSC5065 (Sch. 40)	BPP5065	190	149,2	8	22,2	M20
DN80	BSC5080 (Sch. 40)	BPP5080	210	168,3	8	22,2	M20
DN100	BSC50100 (Sch. 40)	BPP50100	254	200	8	22,2	M20
DN125	BSC50125 (Sch. 40)	BPP50125	279	235	8	22,2	M20
DN150	BSC50150 (Sch. 40)	BPP50150	318	269,9	12	22,2	M20

JOINTS KLINGERITE**KLINGERIT GASKETS****Joints de Brides sans ami-
ante :**

Joints Klingerite épaisseur 3 mm.

**Flanges Gaskets asbestos-
free :**

Klingerit gaskets 3 mm.

REFERENCE NUMBER	DESIGNATION DESCRIPTION	DIAMETRE DIAMETER
JSA15	POUR BRIDE / FOR FLANGE (51 x 27 x 3)	1/2"
JSA20	POUR BRIDE / FOR FLANGE (62 x 26 x 3)	3/4"
JSA25	POUR BRIDE / FOR FLANGE (71 x 34 x 3)	1"
JSA32	POUR BRIDE / FOR FLANGE (82 x 42 x 3)	1" 1/4
JSA40	POUR BRIDE / FOR FLANGE (92 x 47 x 3)	1" 1/2
JSA50	POUR BRIDE / FOR FLANGE (109 x 61 x 3)	2"
JSA65	POUR BRIDE / FOR FLANGE (127 x 77 x 3)	2" 1/2
JSA80	POUR BRIDE / FOR FLANGE (142 x 90 x 3)	3"
JSA100	POUR BRIDE / FOR FLANGE (162 x 120 x 3)	4"
JSA150	POUR BRIDE / FOR FLANGE	6"
JSA200	POUR BRIDE / FOR FLANGE	8"

Joints de trous d'homme :

Joints Klingerite épaisseur 3 mm.

Manhole Gaskets :

Klingerit gaskets 3 mm.

REFERENCE NUMBER	DESIGNATION DESCRIPTION
JTH1	DIAMETRE / DIAMETER 421 x 395 x 3 mm
JTH2	DIAMETRE / DIAMETER 440 x 410 x 3 mm
JTH3	DIAMETRE / DIAMETER 522 x 455 x 3 mm
JTH11	DIAMETRE / DIAMETER < 500 mm
JTH12	DIAMETRE / DIAMETER > 500 mm
JTH16	PLAQUE JOINT BAU 1,5 m x 1,5 m x 3 mm
JTH17	PLAQUE JOINT BAU 1,5 m x 1,5 m x 4 mm

SOUPAPES DE SURETE

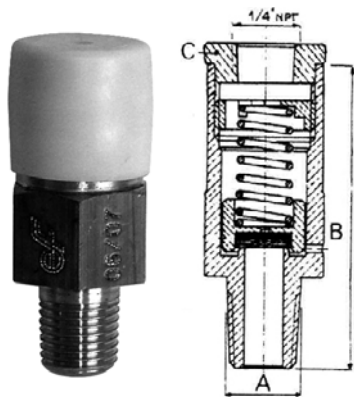
RELIEF VALVES

Série S109, S112, S113,
3127, PRV9432, SS9432,
SS8021J :

Soupapes hydrostatiques conçues
pour la protection des canalisations.

S109, S112, S113, 3127,
PRV9432, SS9432, SS8021J
Series :

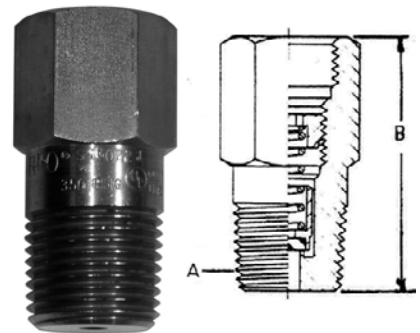
Hydrostatic relief valves designed
especially for the protection of
piping.



S109 - S112 - S113



3127



SS8021J

REFERENCE NUMBER	CONSTRUCTION	JOINTS GASKETS	TARAGE SET PRESSURE	A NPT	B MM	ADAPTEUR PIPE AWAY C	CE PED 97/23/CE
S109	LAITON / BRASS	BUNA	300 PSI 20,69 BAR	1/4"	53	S2010	NON / NO
S112			375 PSI 25,85 BAR				
S113			435 PSI 29,98 BAR				
3127H	LAITON / BRASS	BUNA	275 PSI 18,96 BAR	1/4"	55		OUI / YES
3127J			350 PSI 24,13 BAR				
3127K			375 PSI 25,85 BAR				
3127P			300 PSI 20,69 BAR				
3127U			450 PSI 31,03 BAR				
PRV9432	LAITON / BRASS	BUNA	17 - 600PSI * 1.17 - 41,36 BAR *	1/4"	66	B-9412-2	OUI / YES
SS9432	INOX / ST. STEEL	BUNA	17 - 600PSI 1.17 - 41,36 BAR			SS-9412-4	
SS8021J	INOX / ST. STEEL	BUNA	350 PSI 24,13 BAR	1/4"	48	INCLUS / INCLUDED	OUI / YES
SS8021L			400 PSI 27,85 BAR				
SS8021U			450 PSI 31,03 BAR				

Joint téflon sur demande / Teflon seat disc on request

Autres tarages sur demande / Other set pressure on request

* : PRV9432 avec joints PTFE / PRV9432 with PTFEseals --> 10 - 41BAR / 140- 600 PSI

VANNES A BOISSEAU SPHERIQUE

BALL VALVES

Vannes "ALFA" :

Corps : Acier
Sphère : Inox
Joints : PTFE
Logo ATEX / Logo CE PED

"ALFA" valves :

Body : Steel
Ball : Stainless steel
Gaskets : PTFE
Logo ATEX / CE PED



Connections à brides :

Flanged ends :

Ø	PN50 (ASA 300)
1/2"	ALFA6015B
3/4"	ALFA6020B
1"	ALFA6025B
1" 1/4	ALFA6032B
1" 1/2	ALFA6040B
2"	ALFA6050B
2" 1/2	ALFA6065B
3"	ALFA6080B
4"	ALFA60100B

Connections à souder ou taraudées :

Threaded or welded ends :

Ø	PN	TARAUEE / THREADED			A SOUDER BW		
		SECURITE FEU	TPED		SECURITE FEU	TPED	
		FIRE SAFE	MARQUAGE	π	FIRE SAFE	MARQUAGE	π
1/2"	64	ALFA2415T	ALFA2415T-TPED		ALFA2415S	ALFA2415S-TPED	
3/4"	64	ALFA2420T	ALFA2420T-TPED		ALFA2420S	ALFA2420S-TPED	
1"	64	ALFA2425T	ALFA2425T-TPED		ALFA2425S	ALFA2425S-TPED	
1" 1/4	64	ALFA2432T	ALFA2432T-TPED		ALFA2432S	ALFA2432S-TPED	
1" 1/2	64	ALFA2440T	ALFA2440T-TPED		ALFA2440S	ALFA2440S-TPED	
2"	40	ALFA2450T	ALFA2450T-TPED		ALFA2450S	ALFA2450S-TPED	
2" 1/2	40	ALFA2465T	ALFA2465T-TPED		ALFA2465S	ALFA2465S-TPED	
3"	40	ALFA2480T	ALFA2480T-TPED		ALFA2480S	ALFA2480S-TPED	

CLAPETS ANTI RETOUR

BACK PRESSURE CHECK VALVES

Série ARD :

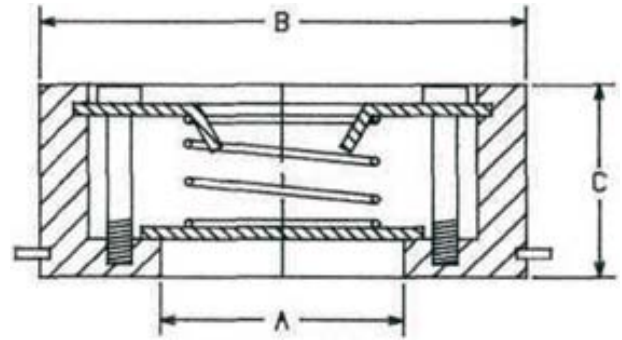
Construction : Inox

A pincer entre brides.

**ARD Series :**

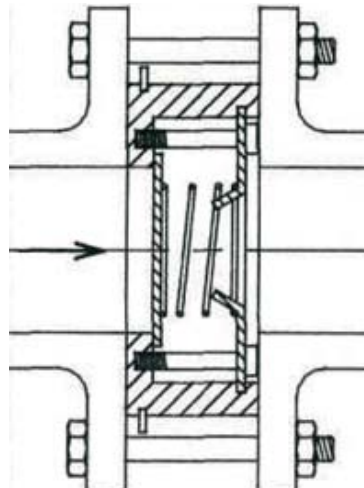
Construction : Stainless steel

Installation between flanges.



REFERENCE NUMBER		mm		
		A	B	C
1/2"	ARD15	15	43	16
3/4"	ARD20	20	53	19
1"	ARD25	25	63	22
1"1/4	ARD32	32	76	28
1"1/2	ARD40	40	86	31
2"	ARD50	50	96	40
2"1/2	ARD65	65	116	46
3"	ARD80	80	132	50
4"	ARD100	100	152	60

Mode d'installation



Typical installation