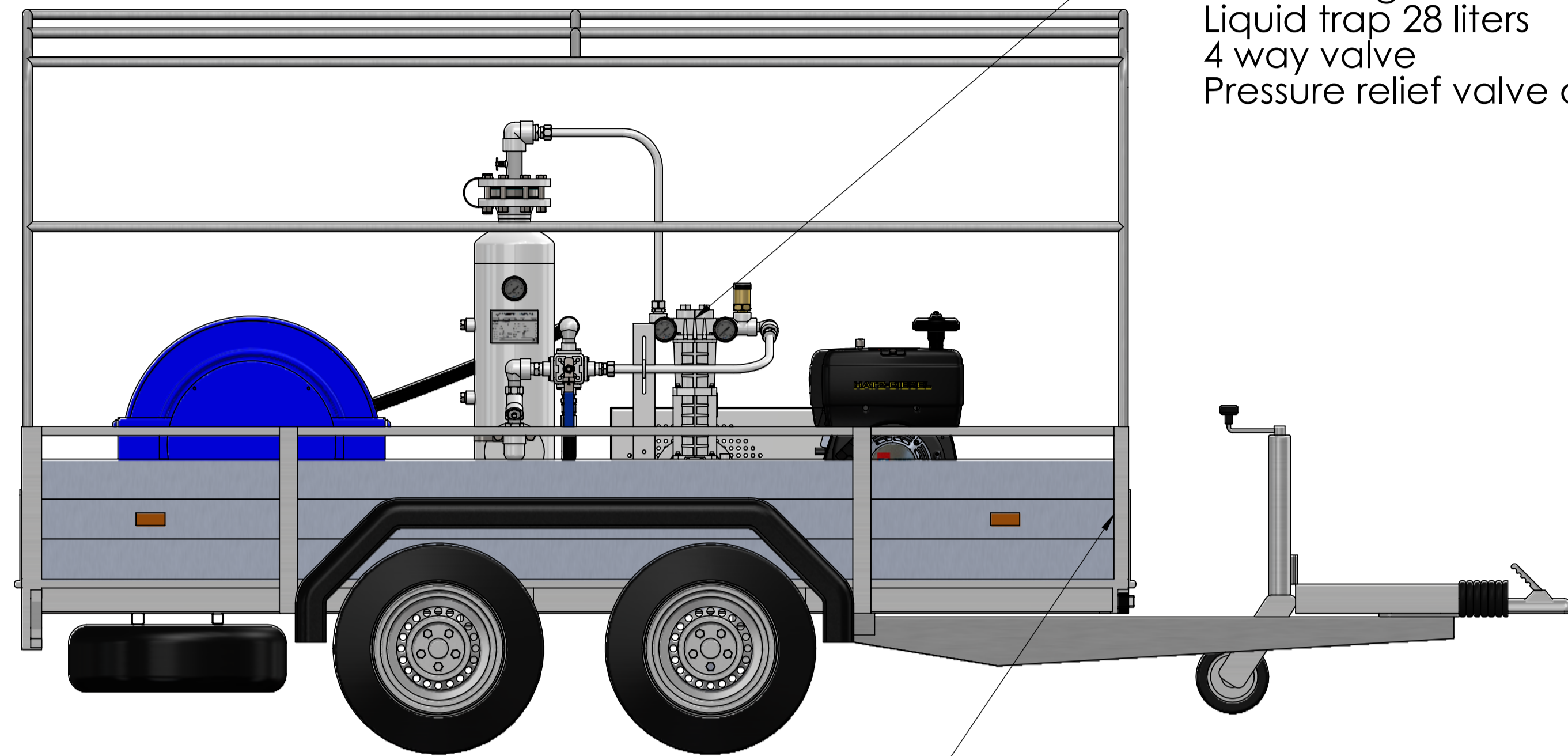




ÉQUIP'FLUIDES

DOUBLE AXLE EMERGENCY INTERVENTION TRAILER



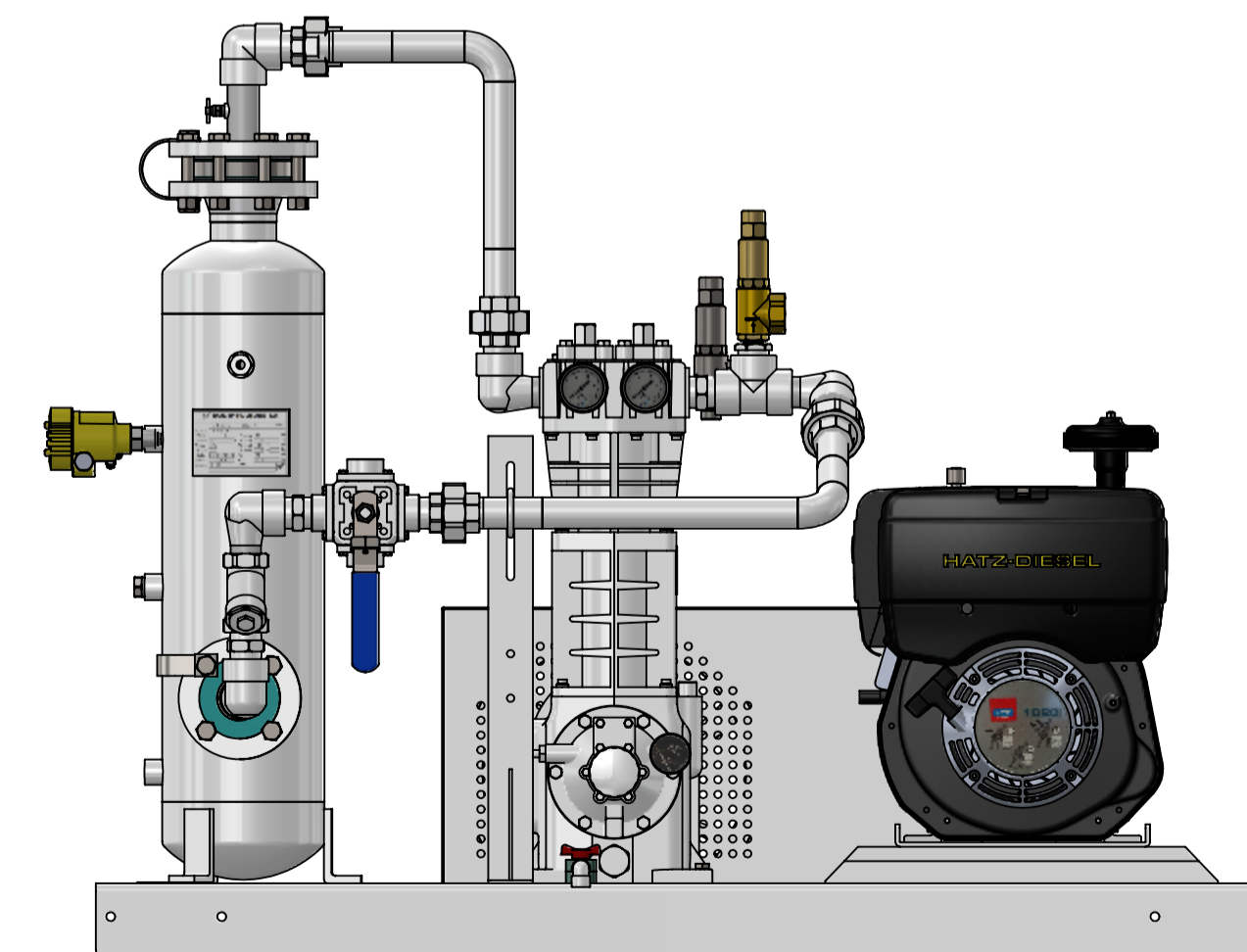
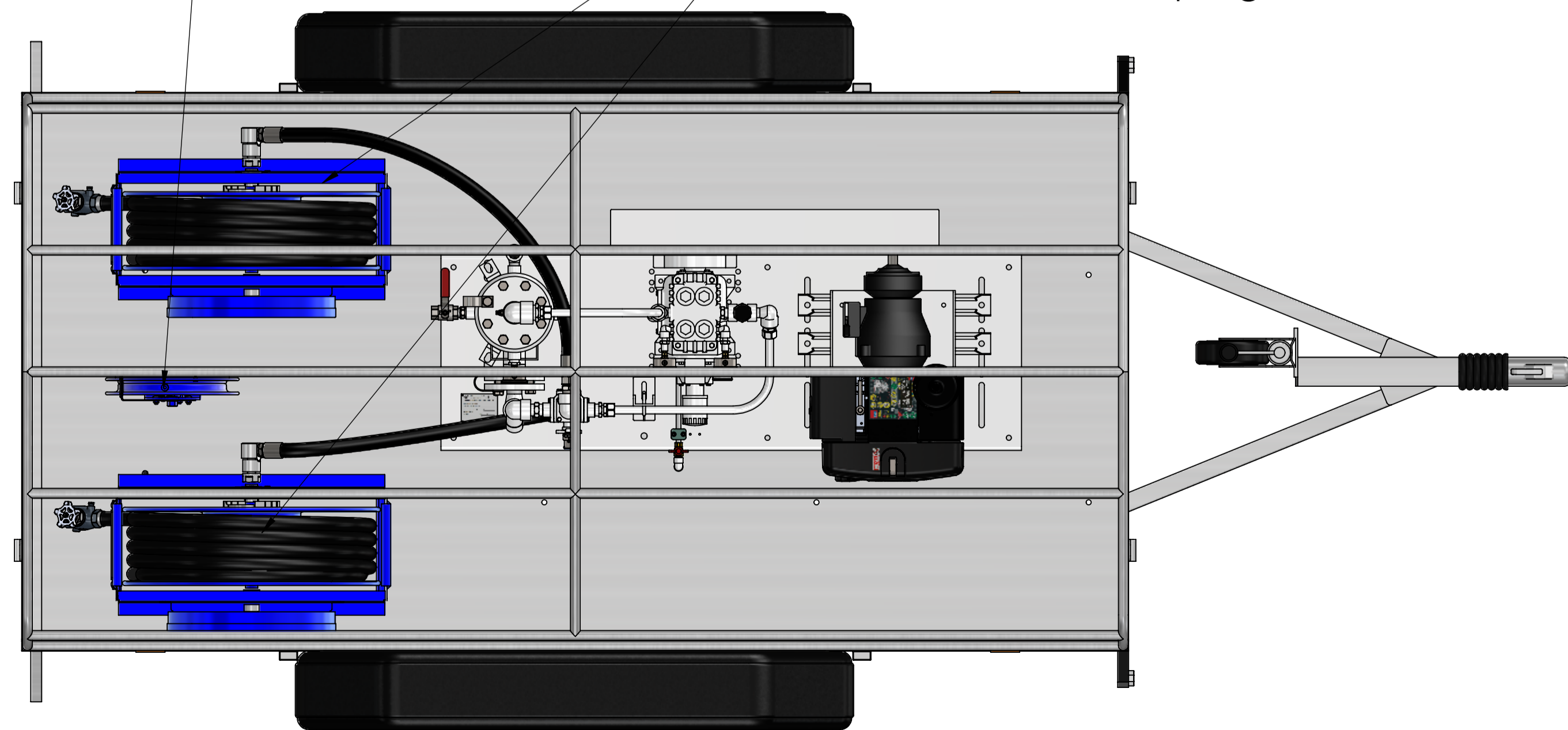
Diesel moto-compressor unit with Corken 291 or 491 compressor
Diesel engine Hatz with manual clutch.
Liquid trap 28 liters
4 way valve
Pressure relief valve and pressure gauges

Double axle trailer with:
- Folding sides
- Tarpaulin
- Crutches
- Spare wheel

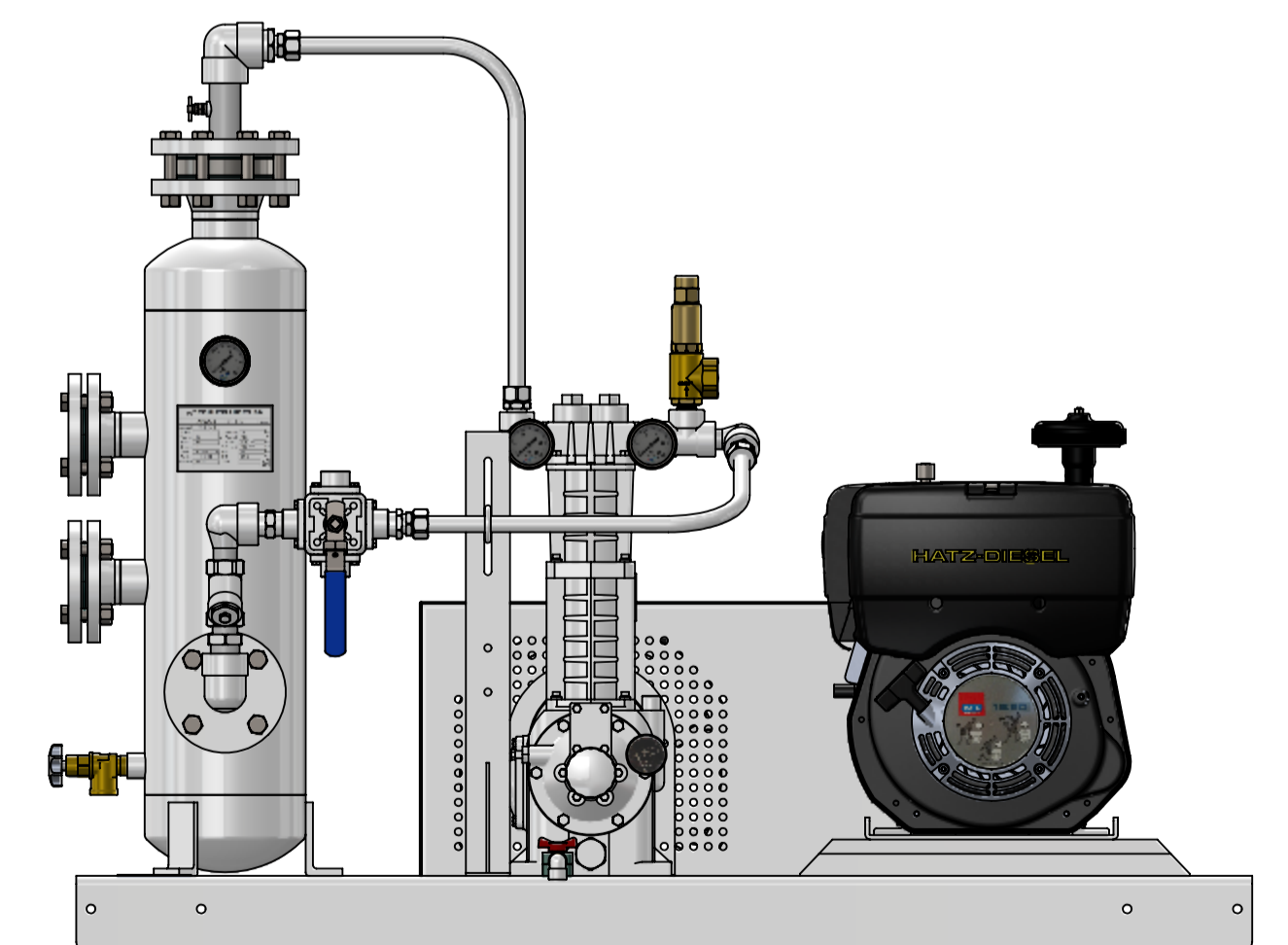


Auto rewind reel for grounding cable

Auto rewind reel for hose (vapor phase)
Equipped with hose DN25 to DN32
Length 15 to 20m with ball valves and F 1"3/4 ACME coupling on each ends.



Corken 491
Max flow 40m³/hr



Corken 291
Max flow 20m³/hr