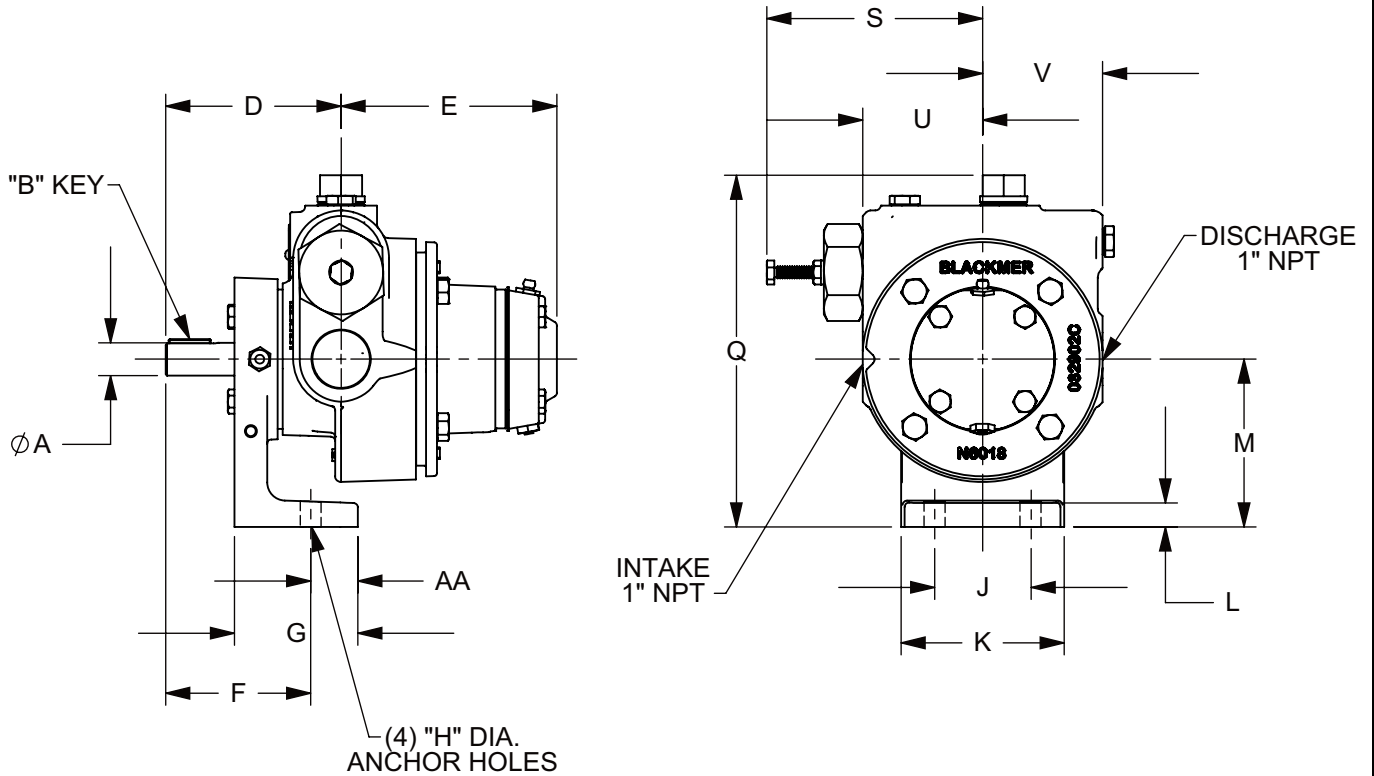



TYPE	SIZE	UNIT STYLE
LGB	1E 1PE	PO

DIMENSIONS 501-105	
Section Effective Replaces Page 1 / 2	501 JUNE 2008 AUG 2007

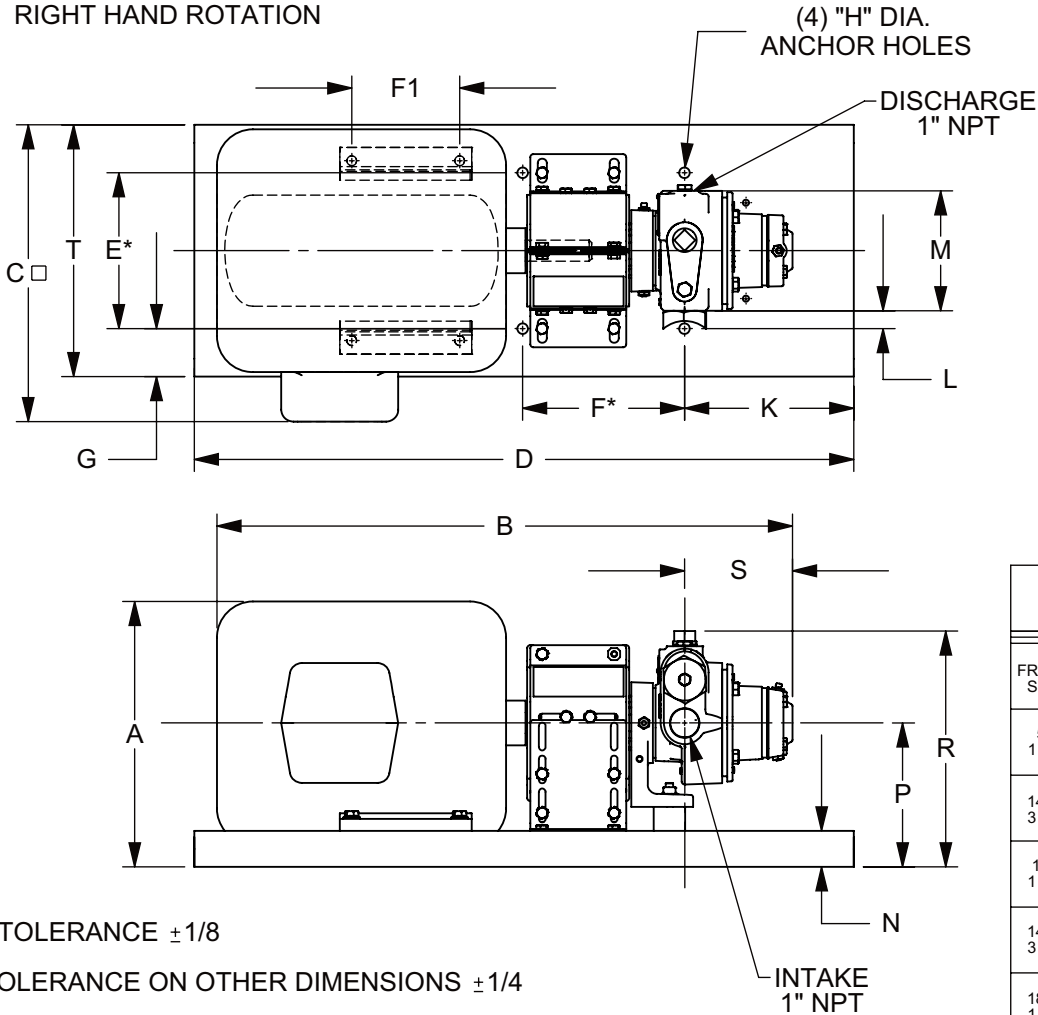


RIGHT HAND ROTATION

MOTOR			UNITS	DIMENSIONS									
FRAME SIZE				A	B	C	D	E	F	G	H	J	K
			IN	11/16	3/16	—	3 11/16	4 1/2	3	2 9/16	7/16	2	3 3/8
			MM	17,4	4,8	—	93,7	114,3	76,2	65,1	11,1	50,8	85,7
				L	M	N	P	Q	R	S	T	U	V
			IN	1/2	3 1/2	—	—	7 5/16	—	4 1/2	—	2 1/2	2 1/2
			MM	12,7	88,9	—	—	185,8	—	114,3	—	63,5	63,5
				W	X	Y	Z	AA	BB	CC	DD	EE	FF
			IN	—	—	—	—	1	—	—	—	—	—
			MM	—	—	—	—	25,4	—	—	—	—	—
				PUMP WEIGHT		WITH STD FLANGES							
				LBS		19							
				KG		8,6							

DIMENSIONS 501-105		TYPE	SIZE	UNIT STYLE	 www.blackmer.com
Section Effective Replaces Page 2 / 2	501 JUNE 2008 AUGUST 2007	LGB	1E 1PE	DM	

RIGHT HAND ROTATION



UNIT WEIGHT				
FRAME SIZE	H.P.	UNITS	LESS MOTOR	WITH MOTOR
56 1 PH	1	LBS	43.4	94
		KG	19.7	42
143T 3 PH	1	LBS	42.9	63
		KG	19.5	38
184 1 PH	1 1/2	LBS	43.4	118
		KG	19.7	53
145T 3 PH	1 1/2	LBS	43.4	95
		KG	19.7	43
182T 1 PH	2	LBS	43.4	127
		KG	19.7	57
145T 3 PH	2	LBS	43.4	95
		KG	19.7	43

* TOLERANCE ±1/8

TOLERANCE ON OTHER DIMENSIONS ±1/4

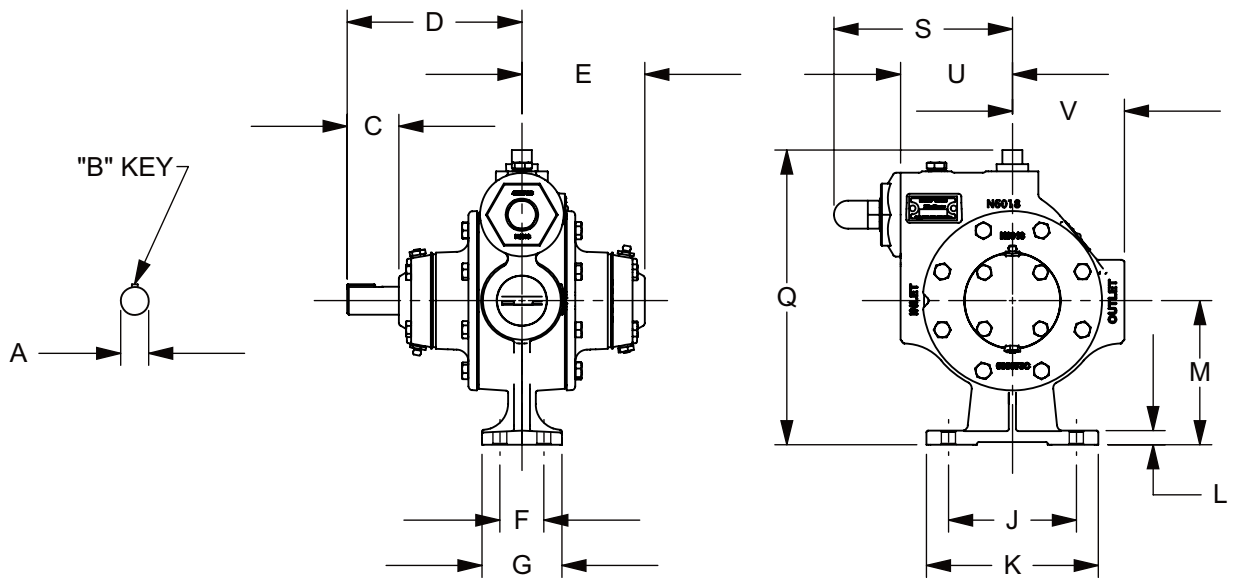
"A" DIMENSION LESS EYEBOLT

□ MAXIMUM UNIT WIDTH

MOTOR EXPLOSION PROOF 1800 RPM 60HZ			UNITS	DIMENSIONS																			
FRAME SIZE	H.P.	BASE NO.		A	B	C	D	E	F	F1	G	H	J	K	L	M	N	P	R	S	T	U	V
56 1 PH	1	901978	IN	9	24 3/4	12 3/4	27 1/2	6 1/2	6 3/4	3	2	7/16	---	7 1/16	3/4	5	1 1/2	5	9 1/4	4 3/8	10 1/2	---	---
			MM	228,6	628,7	323,9	698,5	165,1	171,5	76,2	50,8	11,1	---	179,4	19,1	127	38,1	127	234,9	111,1	266,7	---	---
143T 3 PH	1	901978	IN	9	23 5/8	12 3/4	27 1/2	6 1/2	6 3/4	4	2	7/16	---	7 1/16	3/4	5	1 1/2	5	9 1/4	4 3/8	10 1/2	---	---
			MM	228,6	600,1	323,9	698,5	165,1	171,5	101,6	50,8	11,1	---	179,4	19,1	127	38,1	127	234,9	111,1	266,7	---	---
184 1 PH	1 1/2	901978	IN	10 3/4	26 7/8	13 1/4	27 1/2	6 1/2	6 3/4	5 1/2	2	7/16	---	7 1/16	3/4	5	1 1/2	6	10 1/4	4 3/8	10 1/2	---	---
			MM	273,1	682,6	336,6	698,5	165,1	171,5	139,7	50,8	11,1	---	179,4	19,1	127	38,1	152,4	260,3	111,1	266,7	---	---
145T 3 PH	1 1/2	901978	IN	9	24 1/2	12 3/4	27 1/2	6 1/2	6 3/4	5	2	7/16	---	7 1/16	3/4	5	1 1/2	5	9 1/4	4 3/8	10 1/2	---	---
			MM	228,6	622,3	323,9	698,5	165,1	171,5	127	50,8	11,1	---	179,4	19,1	127	38,1	127	234,9	111,1	266,7	---	---
182T 1 PH	2	901978	IN	10 3/4	26 7/8	13 1/4	27 1/2	6 1/2	6 3/4	4 1/2	2	7/16	---	7 1/16	3/4	5	1 1/2	6	10 1/4	4 3/8	10 1/2	---	---
			MM	273,1	682,6	336,6	698,5	165,1	171,5	114,3	50,8	11,1	---	179,4	19,1	127	38,1	152,4	260,3	111,1	266,7	---	---
145T 3 PH	2	901978	IN	9	24 1/2	12 3/4	27 1/2	6 1/2	6 3/4	5	2	7/16	---	7 1/16	3/4	5	1 1/2	5	9 1/4	4 3/8	10 1/2	---	---
			MM	228,6	622,3	323,9	698,5	165,1	171,5	127	50,8	11,1	---	179,4	19,1	127	38,1	127	234,9	111,1	266,7	---	---


TYPE	SIZE	UNIT STYLE
LGRL LGL	1.25 1.5	PO

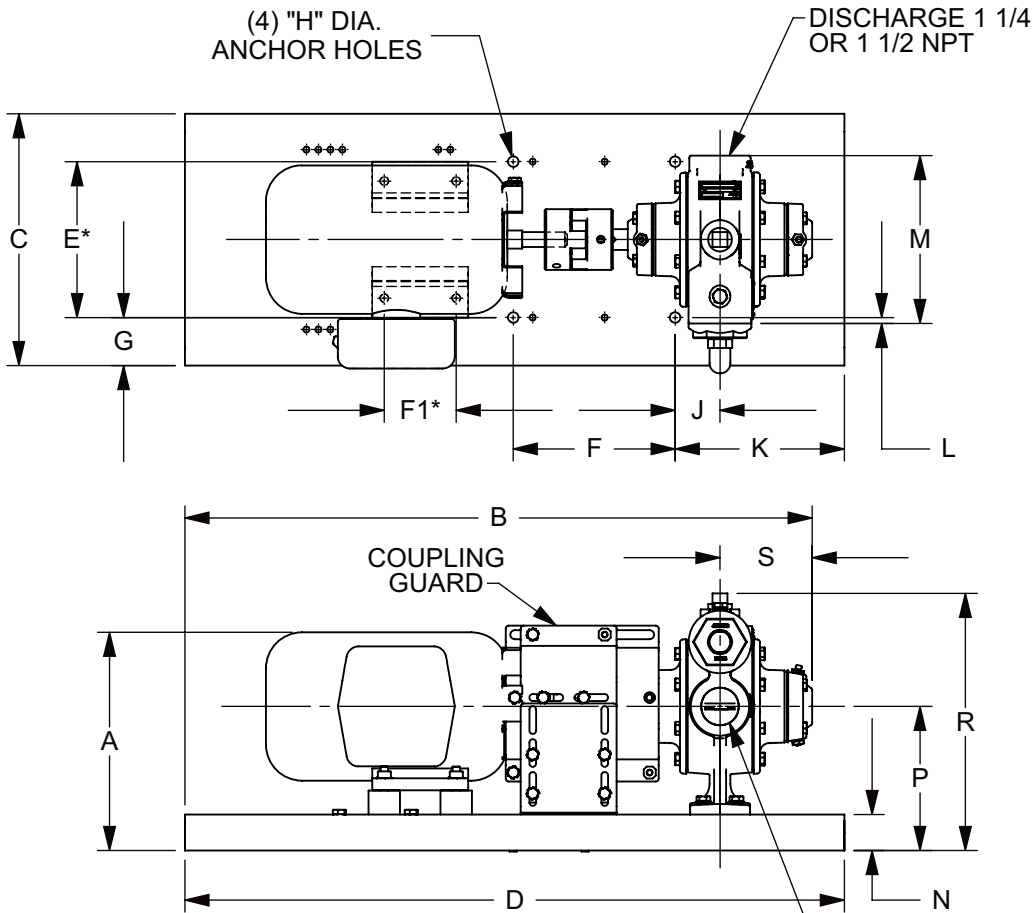
DIMENSIONS 501-107	
Section Effective Replaces Page 1 / 5	501 MAY 2008 AUGUST 2007



* TOLERANCE $\pm 1/8$
 "A" DIMENSION LESS EYEBOLT
 □ MAXIMUM UNIT WIDTH
 RIGHT-HAND ROTATION SHOWN
 FOR LEFT-HAND ROTATION, CASING ORIENTATION IS OPPOSITE THAT SHOWN


MOTOR			UNITS	DIMENSIONS									
FRAME SIZE				A	B	C	D	E	F	G	H	J	K
			IN	7/8	3/16	1 5/8	5 7/16	3 7/8	1 3/8	2 1/2	7/16	4	5 3/8
			MM	22,2	4,8	41,3	138,1	98,4	34,9	63,5	11,1	101,6	136,5
				L	M	N	P	Q	R	S	T	U	V
			IN	7/16	4 1/2	--	--	9 3/16	--	5 9/16	--	3 1/2	3 1/2
			MM	11,1	114,3	--	--	233,4	--	141,3	--	88,9	88,9
				W	X	Y	Z	AA	BB	CC	DD	EE	FF
			IN	--	--	--	--	--	--	--	--	--	--
			MM	--	--	--	--	--	--	--	--	--	--
				PUMP WEIGHT									
				30 LBS									
				13.6 KG									

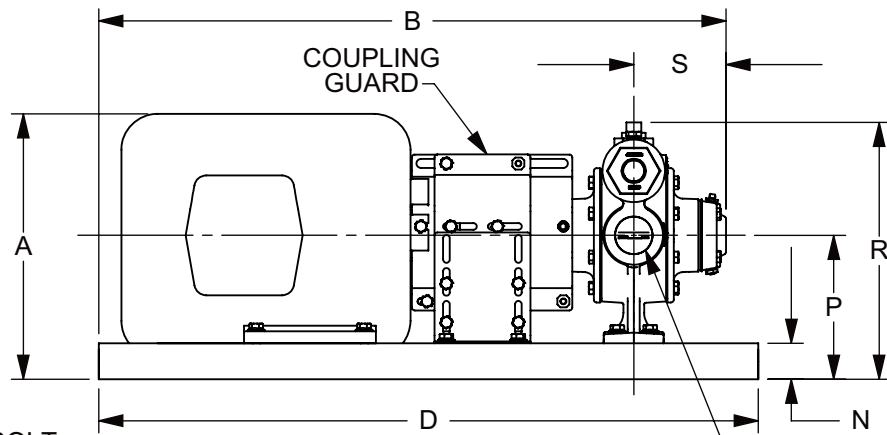
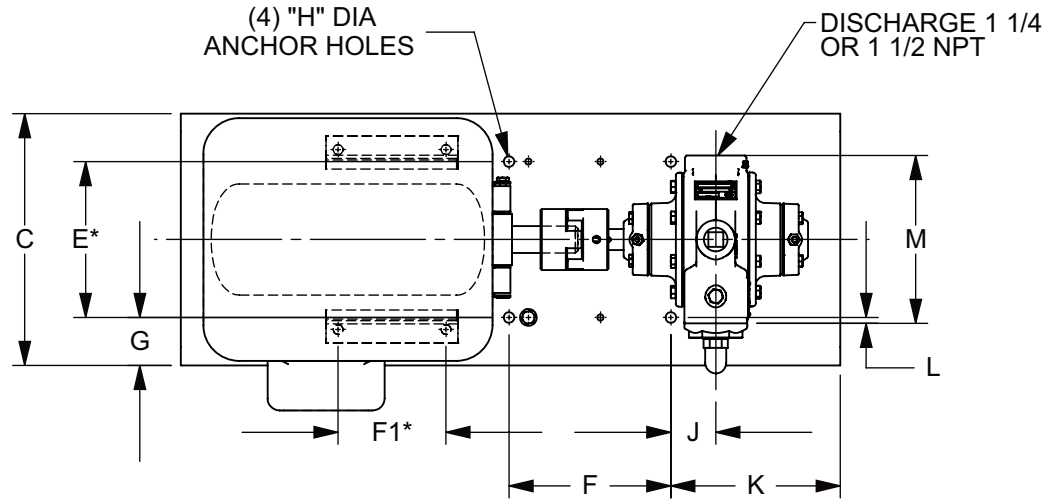
DIMENSIONS 501-107		TYPE	SIZE	UNIT STYLE	 www.blackmer.com
Section Effective Replaces Page 2 / 5	501 MAY 2008 AUGUST 2007	LGRL LGL	1.25 1.5	DM	



* TOLERANCE $\pm 1/8$
 "A" DIMENSION LESS EYEBOLT
 □ MAXIMUM UNIT WIDTH
 RIGHT-HAND ROTATION SHOWN
 FOR LEFT-HAND ROTATION, CASING ORIENTATION IS OPPOSITE THAT SHOWN

MOTOR EXPLOSION PROOF 1800RPM 60HZ			UNITS	DIMENSIONS									
FRAME SIZE	H.P.	BASE NO.		A	B	C	D	E	F	F1	G	H	J
56C	1	901978	IN	9 1/8	26 1/8	10 1/2	27 1/2	6 1/2	6 3/4	3	2	7/16	1 7/8
			MM	231,8	663,6	266,7	698,5	165,1	171,5	76,2	50,8	11,1	47,6
				K	L	L1	M	N	P	Q	R	S	T
			IN	7 1/16	1/4	--	7	1 1/2	6	--	10 5/8	3 7/8	--
			MM	179,4	6,4	--	177,8	38,1	152,4	--	269,9	98,4	--
				U	V	W	X	Y	Z	AA	BB	CC	DD
			IN	--	--	--	--	--	--	--	--	--	--
			MM	--	--	--	--	--	--	--	--	--	--
				PUMP WEIGHT		UNIT WEIGHT LESS MOTOR							
				30 LBS		77 LBS							
				13,6 KG		35 KG							

DIMENSIONS 501-107		TYPE	SIZE	UNIT STYLE	 www.blackmer.com
Section Effective Replaces Page 4 / 5	501 MAY 2008 AUGUST 2007	LGRL LGL	1.25 1.5	DM	



* TOLERANCE $\pm 1/8$
 "A" DIMENSION LESS EYEBOLT
 □ MAXIMUM UNIT WIDTH
 RIGHT-HAND ROTATION SHOWN
 FOR LEFT-HAND ROTATION, CASING ORIENTATION IS OPPOSITE THAT SHOWN

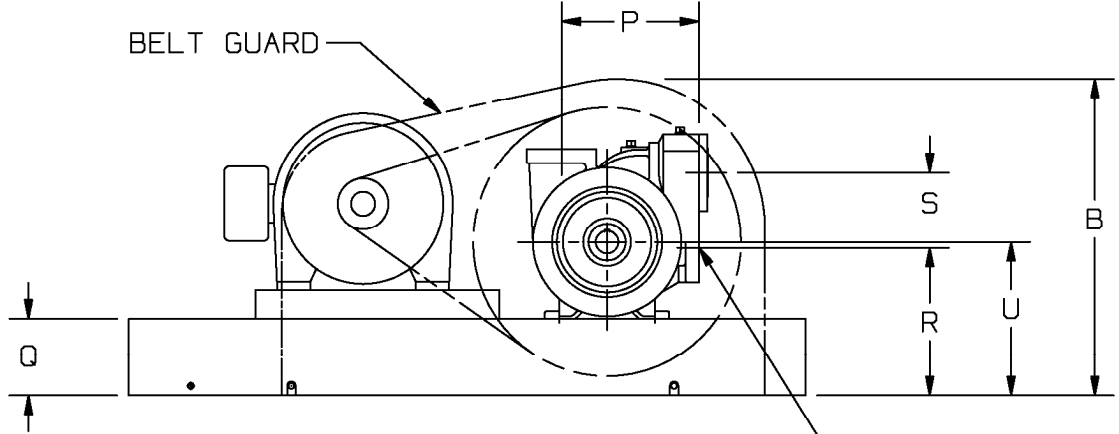
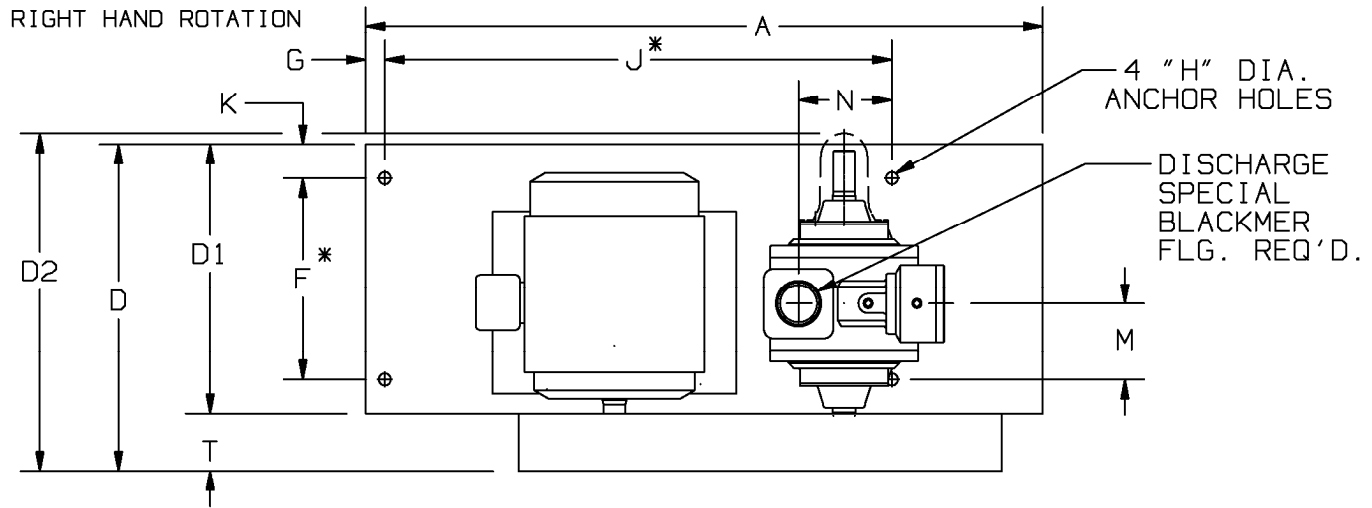
MOTOR EXPLOSION PROOF 1800RPM 60HZ			UNITS	DIMENSIONS																			
FRAME SIZE	H.P.	BASE NO.		A	B	C	D	E	F	F1	G	H	J	K	L	M	N	P	R	S	T	U	V
182T 1 PH	2	901978	IN	11 1/16	26 1/8	10 1/2	27 1/2	6 1/2	6 3/4	4 1/2	2	7/16	1 7/8	7 1/16	1/4	7	1 1/2	6	10 5/8	3 7/8	--	--	--
			MM	281	663,6	266,7	698,5	165,1	171,5	114,3	50,8	11,1	47,6	179,4	6,4	177,8	38,1	152,4	269,9	98,4	--	--	--
182T 3PH	3	901978	IN	11 1/16	26 1/8	10 1/2	27 1/2	6 1/2	6 3/4	4 1/2	2	7/16	1 7/8	7 1/16	1/4	7	1 1/2	6	10 5/8	3 7/8	--	--	--
			MM	281	663,6	266,7	698,5	165,1	171,5	114,3	50,8	11,1	47,6	179,4	6,4	177,8	38,1	152,4	269,9	98,4	--	--	--
184T 3PH	5	901978	IN	11 1/16	26 1/8	10 1/2	27 1/2	6 1/2	6 3/4	5 1/2	2	7/16	1 7/8	7 1/16	1/4	7	1 1/2	6	10 5/8	3 7/8	--	--	--
			MM	281	663,6	266,7	698,5	165,1	171,5	139,7	50,8	11,1	47,6	179,4	6,4	177,8	38,1	152,4	269,9	98,4	--	--	--
				</																			



www.blackmer.com

TYPE	SIZE	UNIT STYLE
LGL	2	VB

DIMENSIONS 501-111	
Section	501
Effective	August 2007
Replaces	August 2002
Page 2/4	



UNIT DIMENSION LESS FLANGES
 * TOLERANCE $\pm \frac{1}{8}$
 TOLERANCE ON OTHER DIMENSIONS $\pm \frac{1}{4}$

MOTOR		FRAME SIZE	H.P.		UNIT NO.	DIMENSIONS																		
1800	1200		1800	1200		UNIT	A	B	D	D1	D2	F	G	H	J	K	M	N	P	Q	R	S	T	U
330	220	182T	3	1.5	874415	IN.	35 ³ / ₈	15 ⁷ / ₈	17 ¹ / ₈	14	17 ³ / ₄	10 ¹ / ₂	1	5/8	26 ¹ / ₂	1 ³ / ₄	4	4 ⁷ / ₈	7 ¹ / ₄	4	7 ³ / ₄	5 ¹ / ₄	3 ¹ / ₈	8
						MM	899	403	435	356	451	267	25	16	673	44	102	124	184	102	197	133	79	203
420	280	182T	3	1.5	874414	IN.																		
						MM																		
420	280	184T	5	2	874416	IN.																		
						MM																		
520	340	182T	3	1.5	874419	IN.																		
						MM																		
520	340	184T	5	2	874417	IN.																		
						MM																		
660	440	184T	5	2	874420	IN.																		
						MM																		
660	440	213T	7.5	3	874418	IN.		17	20 ¹ / ₂															
						MM		432	521															

SAME AS ABOVE

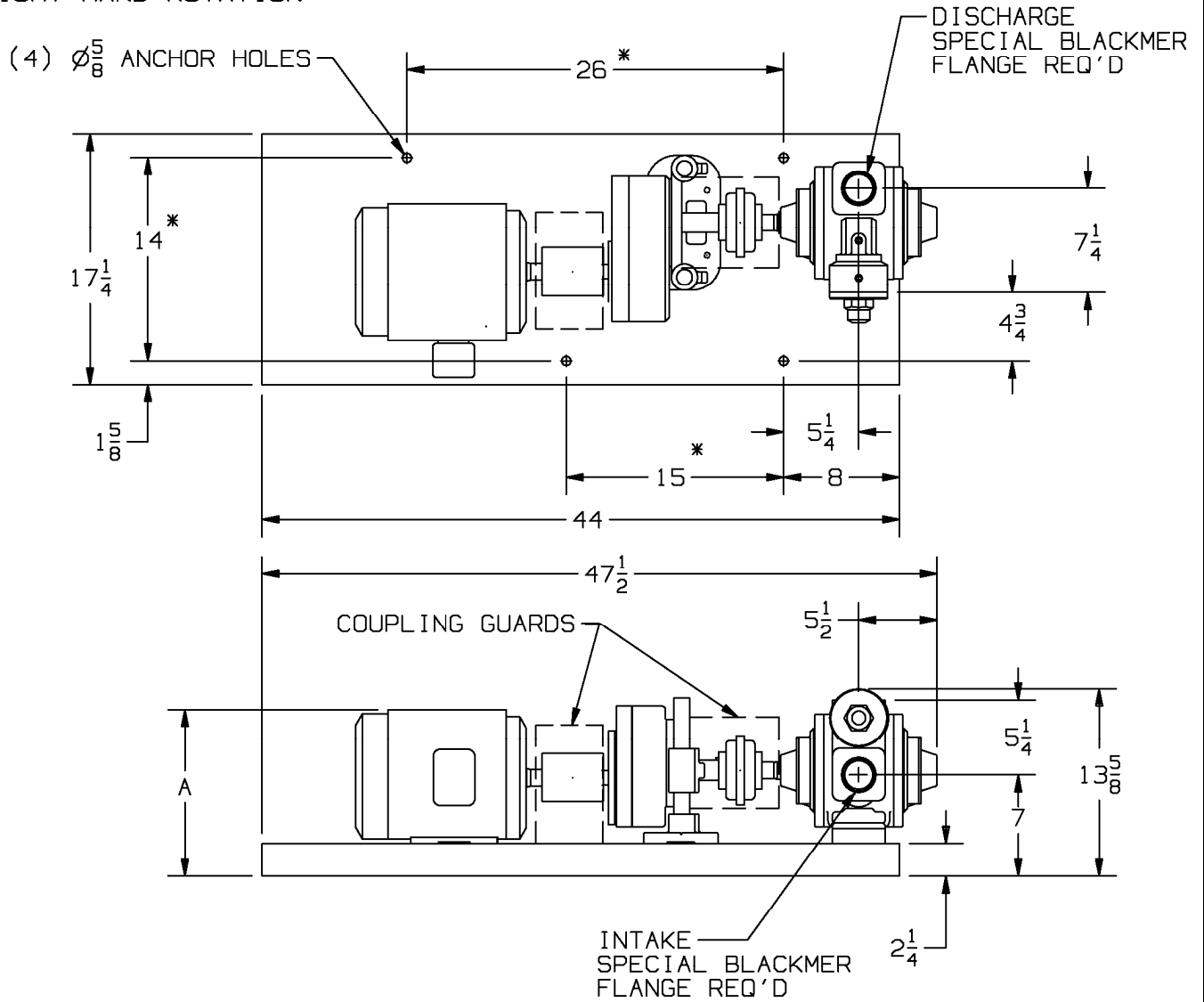


www.blackmer.com

TYPE	SIZE	UNIT STYLE
LGL	2E	HRA

DIMENSIONS 501-111	
Section	501
Effective	August 2007
Replaces	August 2002
Page	3/4

RIGHT HAND ROTATION



UNIT DIMENSION LESS FLANGES

* TOLERANCE $\pm \frac{1}{8}$

TOLERANCE ON OTHER DIMENSIONS $\pm \frac{1}{4}$

"A" DIMENSION LESS EYEBOLT

FLG. HGT: 2" NPT - 1 1/8
2" WELD - 1 1/4

MOTOR			BASE NO.	DIMENSIONS	
FRAME SIZE		A			
182T		901776	11 7/8		
184T		901776	11 7/8		

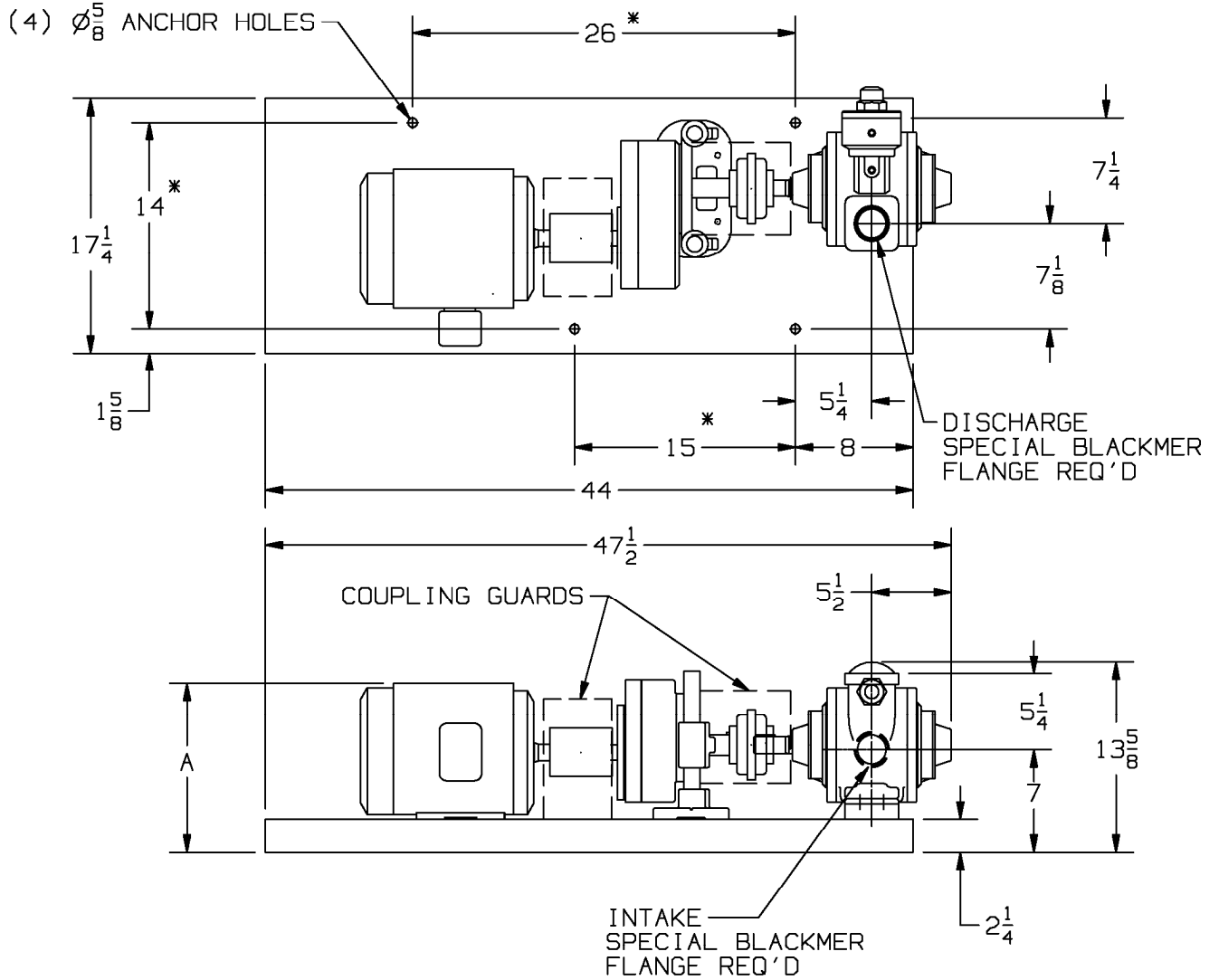
DIMENSIONS 501-111

Section 501
 Effective August 2007
 Replaces August 2002
 Page 4/4

TYPE	SIZE	UNIT STYLE
LGL	2E	HRA



LEFT HAND ROTATION



UNIT DIMENSION LESS FLANGES

* TOLERANCE $\pm \frac{1}{8}$

TOLERANCE ON OTHER DIMENSIONS $\pm \frac{1}{4}$

"A" DIMENSION LESS EYEBOLT

FLG. HGT: 2" NPT - 1 1/8
 2" WELD - 1 1/4

MOTOR		BASE NO.	DIMENSIONS	
FRAME SIZE			A	
182T		901776	11 $\frac{7}{8}$	
184T		901776	11 $\frac{7}{8}$	

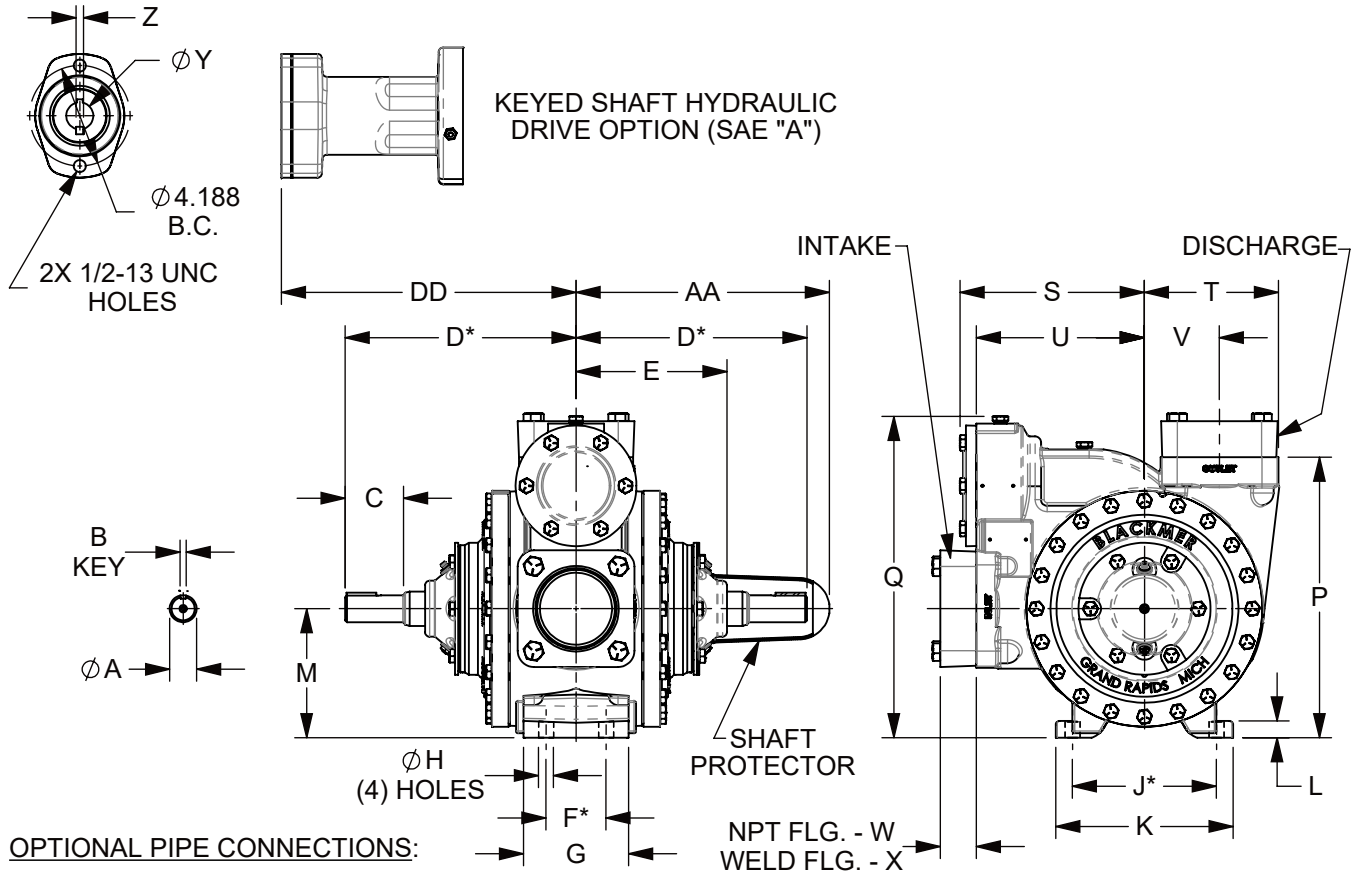


TYPE	SIZE	UNIT STYLE	DIMENSIONS 501-113	
LGL LGLD3	3	PO	Section Effective Replaces Page 1 / 4	501 May 2020 Aug 2008

RIGHT HAND ROTATION. FOR LEFT HAND ROTATION, SHAFT PROJECTION IS OPPOSITE THAT SHOWN.

*TOLERANCE $\pm 1/8"$

TOLERANCE ON OTHER DIMENSIONS $\pm 1/4"$



OPTIONAL PIPE CONNECTIONS:
 3" NPT FLANGE - NODULAR
 3" WELD FLANGE - STEEL

DIMENSIONS											WEIGHTS		
UNITS	A	B	C	D	E	F	G	H	J	K	UNITS	PUMP ONLY	
												LGL3	LGLD3
IN	1 1/8	1/4	2 7/16	9 5/8	6 5/16	2 1/2	4 3/8	5/8	6	7 3/8	LBS	121	123
MM	28,6	6,4	61,9	244,5	160,3	63,5	111,1	15,9	152,4	187,3	KG	55	56
	L	M	N	P	Q	R	S	T	U	V		NPT FLGS	
												LGL3	LGLD3
IN	1/2	5 3/8	---	11 11/16	13 3/8	---	7 5/8	5 5/8	7	3 1/8	LBS	131	133
MM	12,7	136,5	---	269,9	339,7	---	193,7	142,9	177,8	79,4	KG	59	60
	W	X	Y	Z	AA	BB	CC	DD	EE	FF		WELD FLGS	
												LGL3	LGLD3
IN	1 1/2	1 3/16	1 1/4	5/16	10 9/16	---	---	12 1/4	---	---	LBS	128	130
MM	38,1	30,2	31,8	7,9	268,3	---	---	311,2	---	---	KG	58	59
	GG	HH	JJ	KK	LL	MM						HYD DRIVE NO FLANGES	
												LGL3	LGLD3
IN	---	---	---	---	---	---					LBS	138	140
MM	---	---	---	---	---	---					KG	63	64



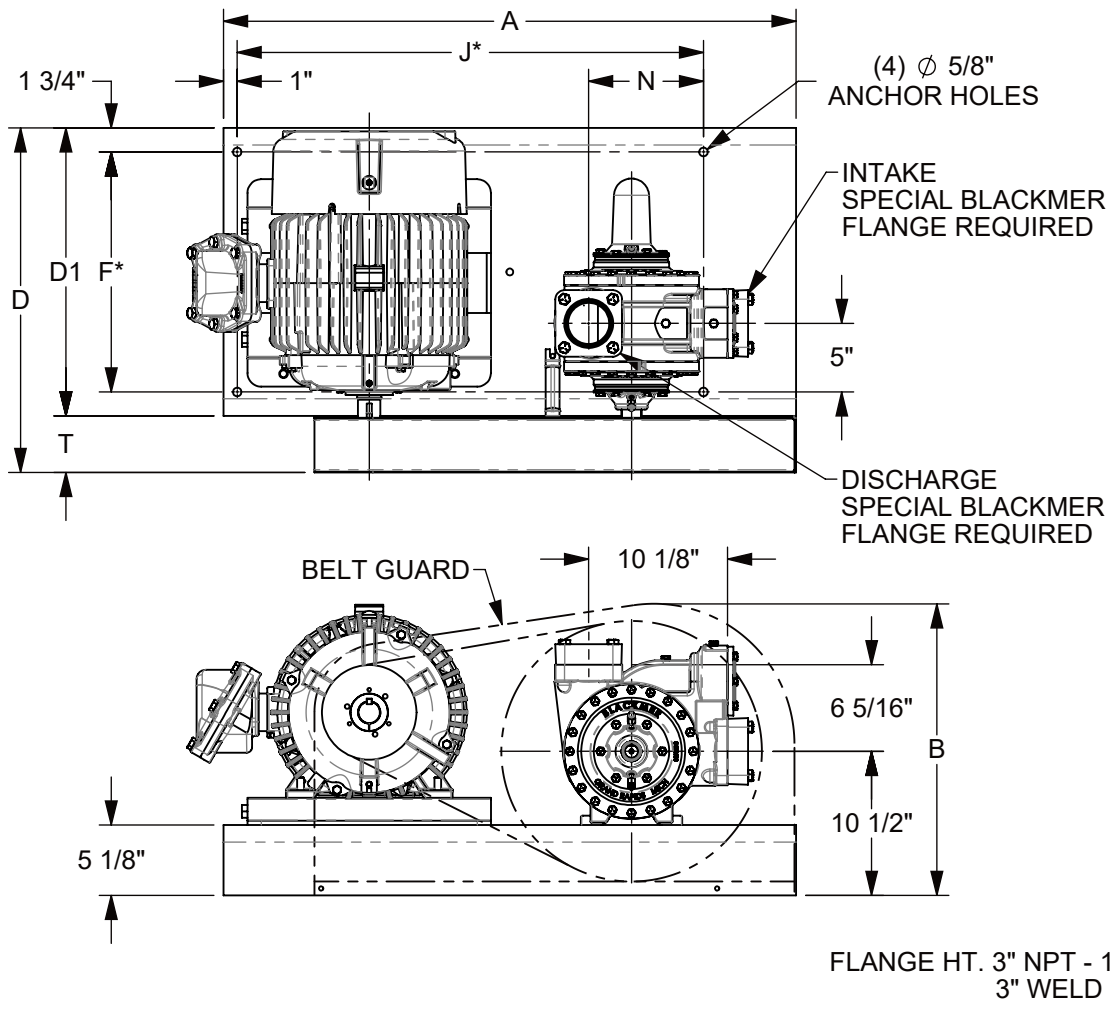
TYPE	SIZE	UNIT STYLE
LGL LGLD3	3	VB

DIMENSIONS 501-113	
Section Effective Replaces Page 2 / 4	501 TBD AUGUST 2008

RIGHT HAND ROTATION SHOWN.

*TOLERANCE $\pm 1/8"$

TOLERANCE ON OTHER DIMENSIONS $\pm 1/4"$



MOTOR				DIMENSIONS												APPROX. UNIT WT. - POUNDS	
FRAME SIZE	SPEED 1750/1450	H.P.	BASE NO.	A	B	D	D1	F	J	N	T					LESS MOTOR	INCL MOTOR
184T	330/275	5/3	901942	36 7/8	21	19 3/8	15 1/2	12	28	6 1/8	3 7/8	---	---	---	---	302	507
213T	410/340	7.5/5	901942	36 7/8	21	19 3/8	15 1/2	12	28	6 1/8	3 7/8	---	---	---	---	307	537
213T	515/425	7.5/5	901942	36 7/8	21	19 3/8	15 1/2	12	28	6 1/8	3 7/8	---	---	---	---	307	537
215T	410/340	10/7.5	901942	36 7/8	21	19 3/8	15 1/2	12	28	6 1/8	3 7/8	---	---	---	---	307	527
215T	515/425	10/7.5	901942	36 7/8	21	19 3/8	15 1/2	12	28	6 1/8	3 7/8	---	---	---	---	307	527
215T	630/525	10/7.5	901942	36 7/8	21	19 3/8	15 1/2	12	28	6 1/8	3 7/8	---	---	---	---	307	527
215T	780/520	10/5	901942	36 7/8	21	19 3/8	15 1/2	12	28	6 1/8	3 7/8	---	---	---	---	307	527
254T	630/525	15/10	901943	41 3/4	21 1/4	25 1/8	21	17 1/2	34	8 3/8	4 1/8	---	---	---	---	354	739
254T	990/825	15/10	901943	41 3/4	21 1/4	25 1/8	21	17 1/2	34	8 3/8	4 1/8	---	---	---	---	354	739
256T	795/660	20/15	901943	41 3/4	21 1/4	25 1/8	21	17 1/2	34	8 3/8	4 1/8	---	---	---	---	354	763



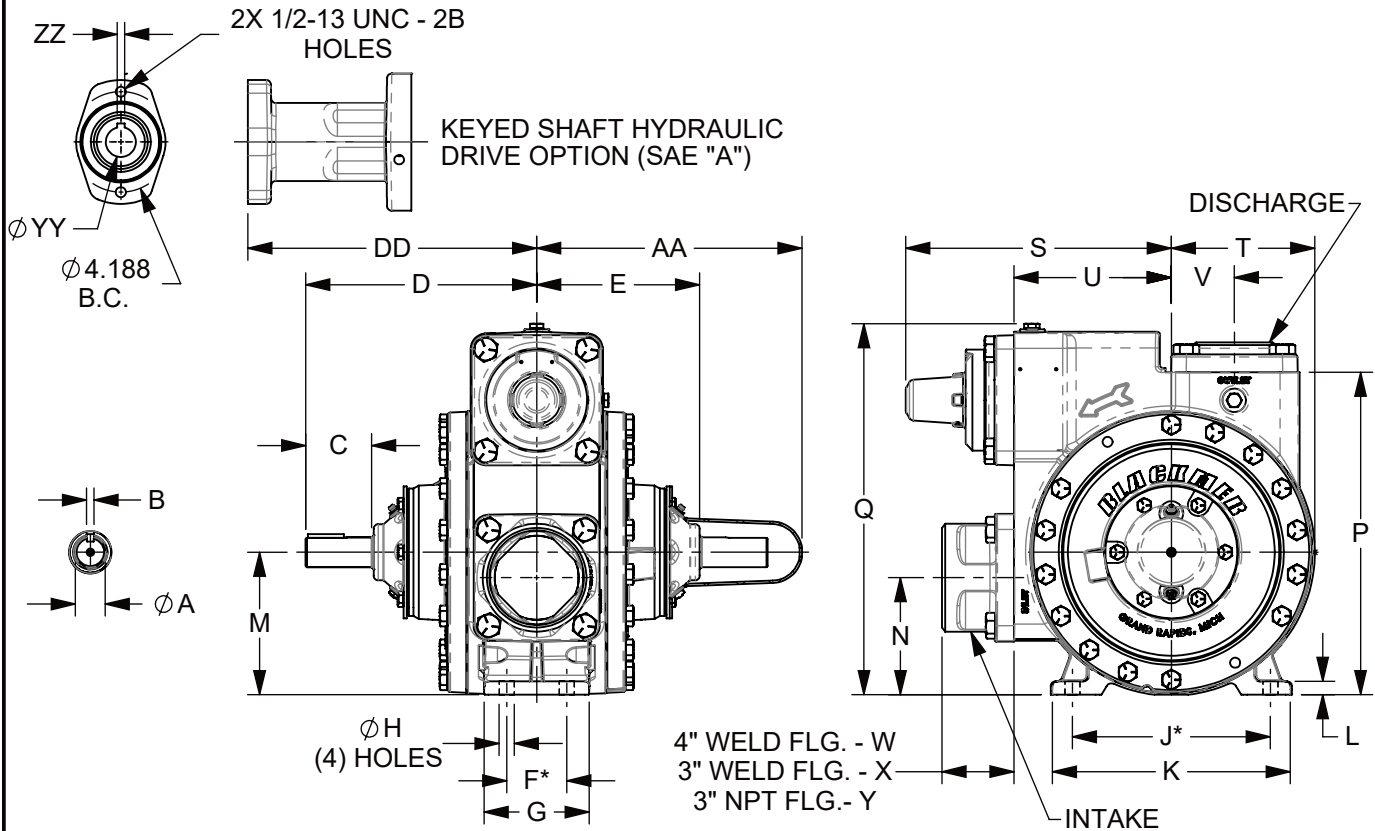
TYPE	SIZE	UNIT STYLE
LGL LGLD4	4A	PO

DIMENSIONS 501-117	
Section Effective Replaces Page 1 / 4	501 MAY 2020 AUGUST 2007

RIGHT HAND ROTATION. FOR LEFT HAND ROTATION, SHAFT PROJECTION IS OPPOSITE THAT SHOWN.

*TOLERANCE $\pm 1/8"$

TOLERANCE ON OTHER DIMENSIONS $\pm 1/4"$



OPTIONAL PIPE CONNECTIONS:

INTAKE

W = 4" WELD FLG., STEEL STANDARD
 X = 3" WELD FLG., STEEL STANDARD
 Y = 3" NPT FLG., NODULAR IRON

DISCHARGE

W = 4" WELD FLG., STEEL STANDARD
 X = 3" WELD FLG., STEEL STANDARD
 Y = 3" NPT FLG., NODULAR IRON

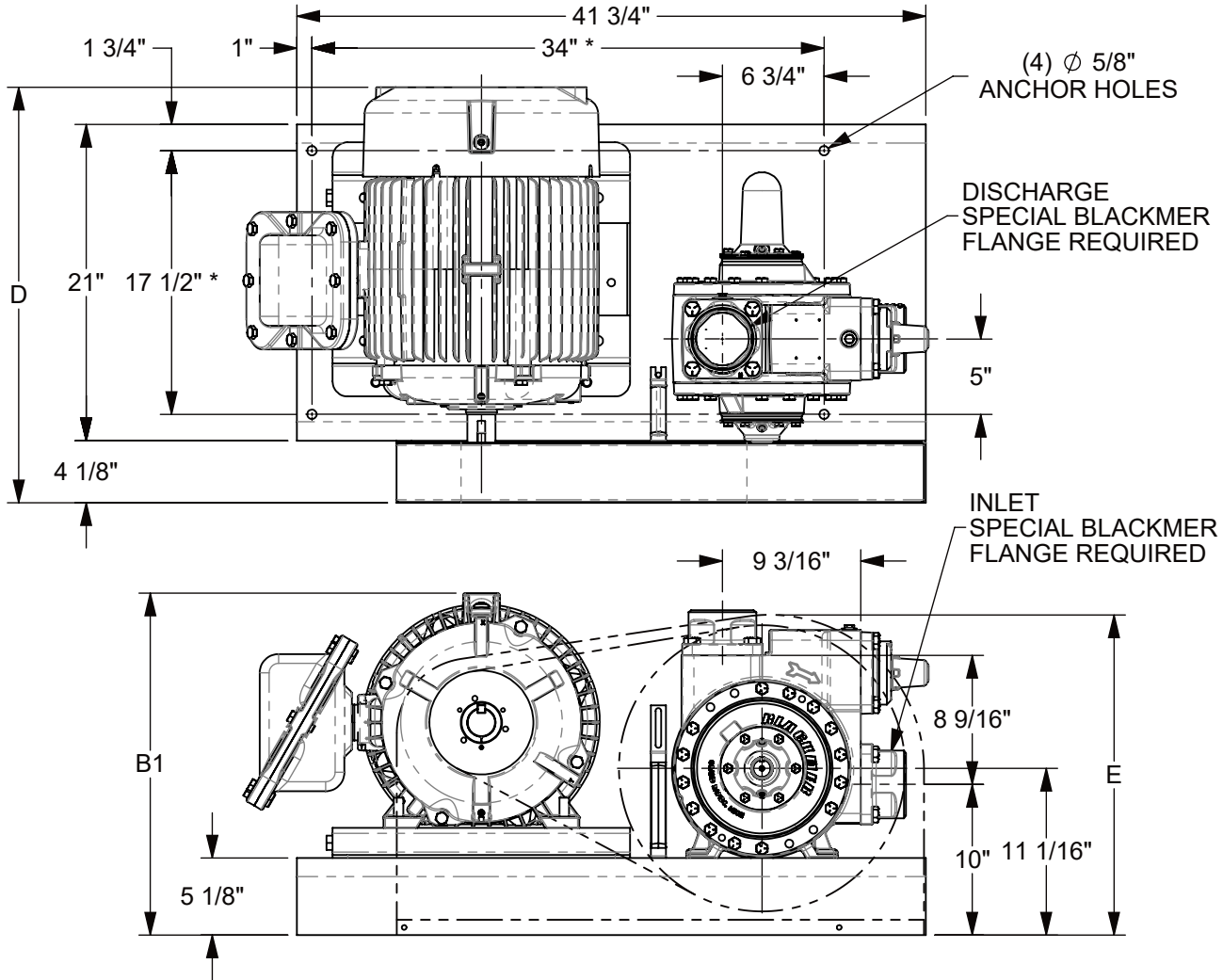
DIMENSIONS											WEIGHTS		
UNITS	A	B	C	D	E	F	G	H	J	K	UNITS	PUMP ONLY	
												LGL4	LGLD4
IN	1 1/4	5/16	2 3/4	9 5/8	6 3/4	2 1/2	4 3/8	5/8	8 1/4	9 15/16	LBS	210	212
MM	31,8	7,9	69,9	244,5	171,5	63,5	111,1	15,9	209,6	252,5	KG	95	96
												3" NPT FLGS	
												LGL4	LGLD4
IN	9/16	5 15/16	4 7/8	13 7/16	15 7/16	---	11 1/16	6	6 9/16	2 5/8	LBS	222	224
MM	14,3	150,9	123,8	341,4	392,2	---	281	152,4	166,6	66,7	KG	101	102
												3/4" WELD FLGS	
												LGL4	LGLD4
IN	3	1 1/4	1 1/2	---	11 1/16	---	---	12 1/16	---	---	LBS	220/224	222/226
MM	76,2	31,8	38,1	---	281	---	---	306,3	---	---	KG	100/102	101/103
												HYD DRV NO FLGS	
												LGL4	LGLD4
IN	---	---	---	---	1 1/4	5/16					LBS	216	218
MM	---	---	---	---	31,8	7,9					KG	98	99



TYPE	SIZE	UNIT STYLE
LGL LGLD4	4A	VB

DIMENSIONS 501-117	
Section Effective Replaces Page 2 / 4	501 MAY 2020 AUGUST 2007

RIGHT HAND ROTATION SHOWN. UNIT DIMENSIONS LESS FLANGES.
 *TOLERANCE $\pm 1/8"$
 TOLERANCE ON OTHER DIMENSIONS $\pm 1/4"$



MOTOR			BASE NO.	DIMENSIONS							APPROX. UNIT WT. - POUNDS	
FRAME SIZE	SPEED 1750/1450	H.P.		B1	D	E					LESS MOTOR	INCL MOTOR
213T	335/275	7.5/5	901943	---	25 1/8	21 1/4					439	694
215T	335/275	10/7.5	901943	---	25 1/8	21 1/4					439	727
215T	410/340	10/7.5	901943	---	25 1/8	21 1/4					439	727
254T	410/340	15/10	901943	---	26 11/16	21 1/4					458	843
254T	515/425	15/10	901943	---	26 11/16	21 1/4					458	843
256T	515/425	20/15	901943	---	26 11/16	21 1/4					458	867
254T	630/525	15/10	901943	---	26 11/16	21 1/4					458	843
256T	630/525	20/15	901943	---	26 11/16	21 1/4					458	867
284T	630/525	25/20	901943	22 11/16	27 9/16	21 1/4					455	991
286T	795/660	30/25	901931	22 11/16	30 1/8	23 3/4					497	1090
324T	795/660	40/30	901931	24 3/4	30 1/8	23 3/4					505	1234



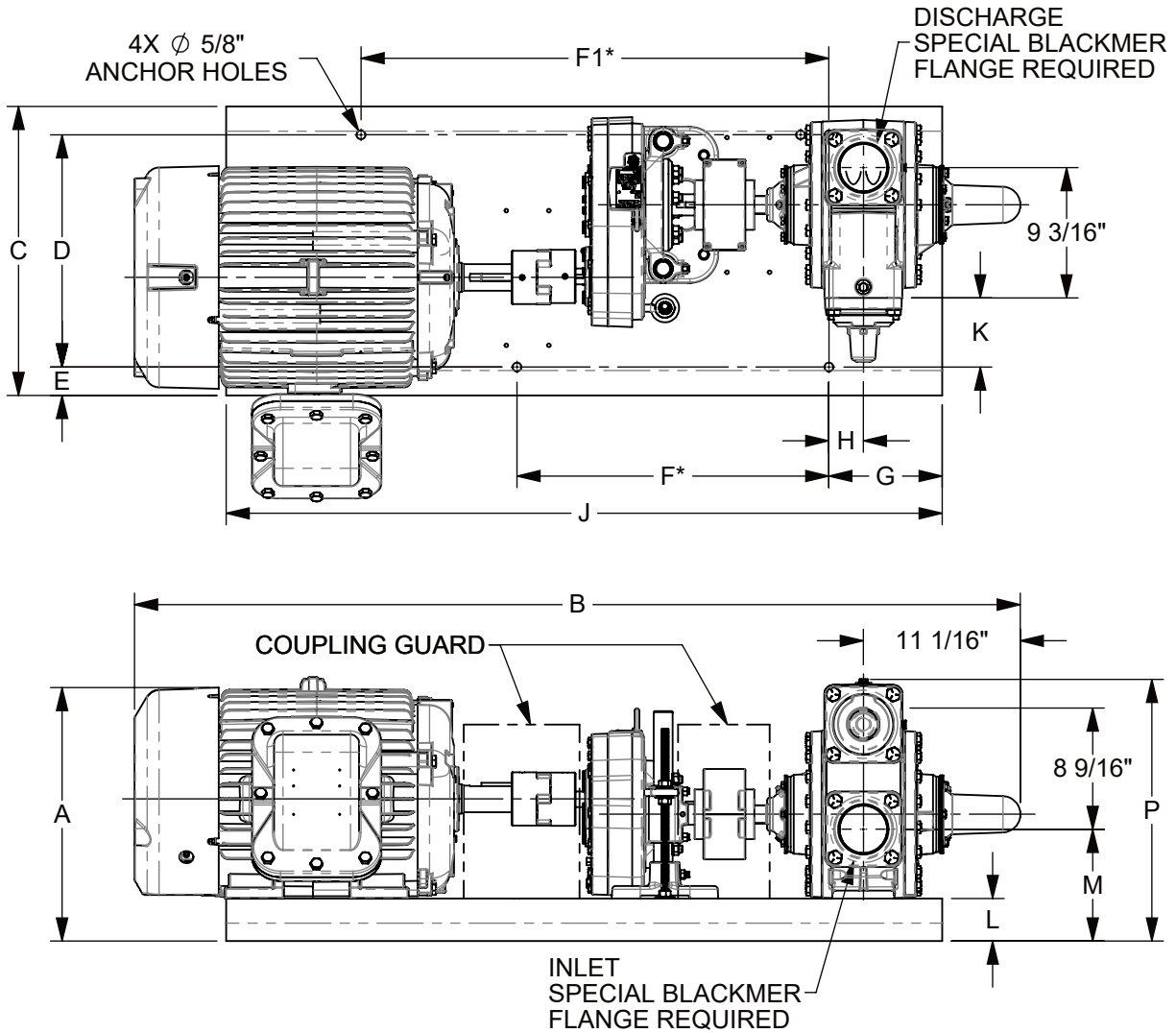
TYPE	SIZE	UNIT STYLE
LGL LGLD4	4A	HRB

DIMENSIONS 501-117	
Section Effective Replaces Page 3 / 4	501 MAY 2020 AUGUST 2007

RIGHT HAND ROTATION SHOWN.

*TOLERANCE $\pm 1/8"$

TOLERANCE ON OTHER DIMENSIONS $\pm 1/4"$



"A" DIMENSION LESS MOTOR EYEBOLT

MOTOR			BASE NO.	DIMENSIONS														APPROX. UNIT WT. - POUNDS	
FRAME SIZE	H.P.	RPM		A	B	C	D	E	F	F1	G	H	J	K	L	M	P	LESS MOTOR	INCL. MOTOR
182T	3	1800	901315	12 7/8	49 3/4	17 1/4	14	1 5/8	15	26	8	5 1/2	44	3 1/8	2 1/4	7 1/8	17 11/16	447	561
184T	5	1800	901315	12 7/8	49 3/4	17 1/4	14	1 5/8	15	26	8	5 1/2	44	3 1/8	2 1/4	7 1/8	17 11/16	447	615
213T	7 1/2	1800	901320	14 1/4	53 5/8	17 1/4	14	1 5/8	15	26	8	5 1/2	44	3 1/8	2 1/4	7 1/8	17 11/16	448	703
215T	10	1800	901320	14 1/4	53 5/8	17 1/4	14	1 5/8	15	26	8	5 1/2	44	3 1/8	2 1/4	7 1/8	17 11/16	448	736
254T	15	1800	901773	16 3/8	57 1/2	20 3/8	16 3/8	2	22	33	8	2 7/16	50 1/2	4 7/8	3	7 7/8	18 7/16	524	909
256T	20	1800	901773	16 3/8	59 5/16	20 3/8	16 3/8	2	22	33	8	2 7/16	50 1/2	4 7/8	3	7 7/8	18 7/16	524	933
284T	25	1800	901773	17 7/8	61	20 3/8	16 3/8	2	22	33	8	2 7/16	50 1/2	4 7/8	3	7 7/8	18 7/16	528	1103
286T	30	1800	901773	17 7/8	62 7/16	20 3/8	16 3/8	2	22	33	8	2 7/16	50 1/2	4 7/8	3	7 7/8	18 7/16	528	1155



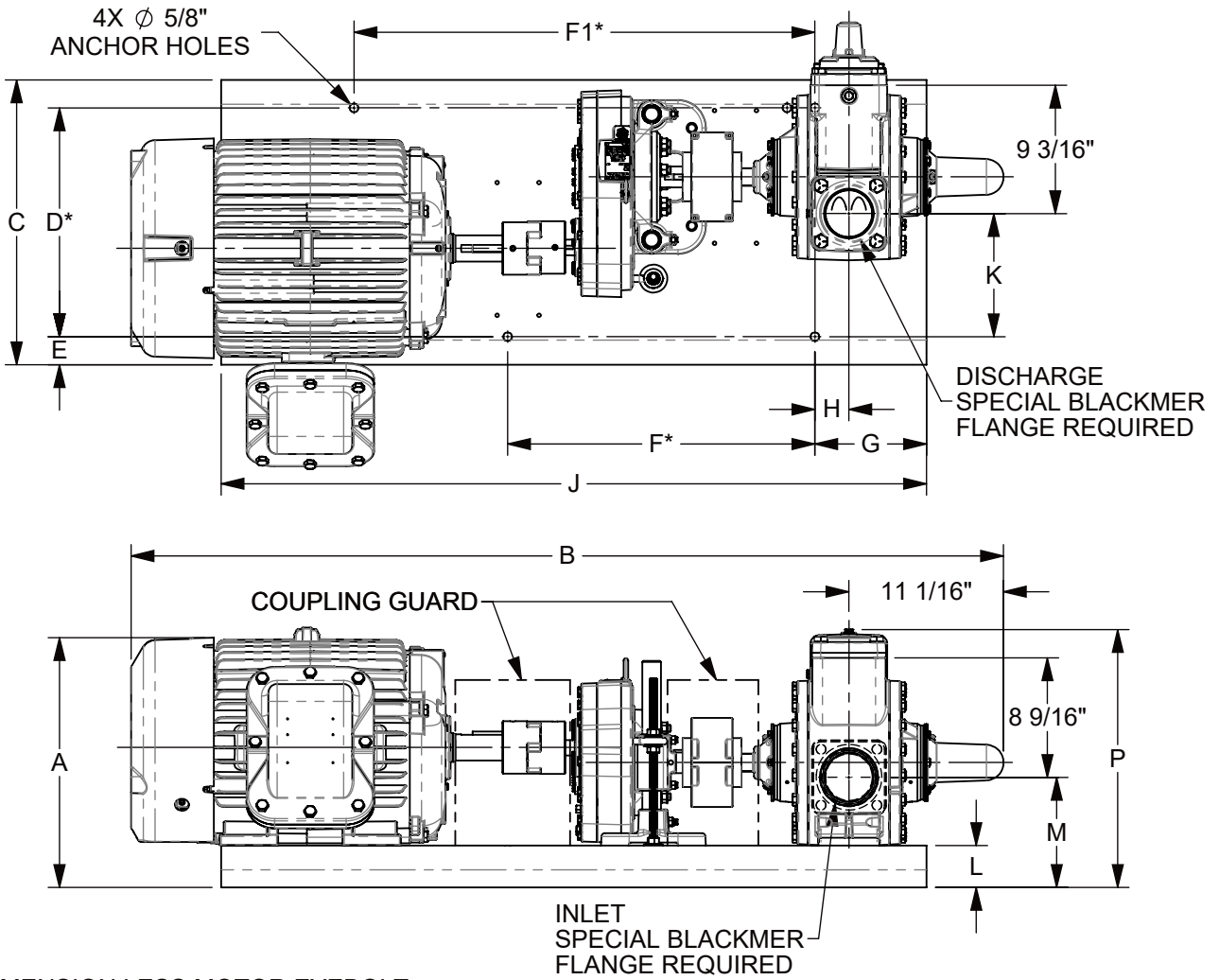
TYPE	SIZE	UNIT STYLE
LGL LGLD4	4A	HRB

DIMENSIONS 501-117	
Section Effective Replaces Page 4 / 4	501 MAY 2020 AUGUST 2007

LEFT HAND ROTATION SHOWN.

*TOLERANCE $\pm 1/8"$

TOLERANCE ON OTHER DIMENSIONS $\pm 1/4"$



"A" DIMENSION LESS MOTOR EYEBOLT

MOTOR			BASE NO.	DIMENSIONS														APPROX. UNIT WT. - POUNDS	
FRAME SIZE	H.P.	RPM		A	B	C	D	E	F	F1	G	H	J	K	L	M	P	LESS MOTOR	INCL. MOTOR
182T	3	1800	901315	12 7/8	49 3/4	17 1/4	14	1 5/8	15	26	8	5 1/2	44	7 1/16	2 1/4	7 1/8	17 11/16	447	561
184T	5	1800	901315	12 7/8	49 3/4	17 1/4	14	1 5/8	15	26	8	5 1/2	44	7 1/16	2 1/4	7 1/8	17 11/16	447	615
213T	7 1/2	1800	901320	14 1/4	53 5/8	17 1/4	14	1 5/8	15	26	8	5 1/2	44	7 1/16	2 1/4	7 1/8	17 11/16	448	703
215T	10	1800	901320	14 1/4	53 5/8	17 1/4	14	1 5/8	15	26	8	5 1/2	44	7 1/16	2 1/4	7 1/8	17 11/16	448	736
254T	15	1800	901773	16 3/8	57 1/2	20 3/8	16 3/8	2	22	33	8	2 7/16	50 1/2	8 13/16	3	7 7/8	18 7/16	524	909
256T	20	1800	901773	16 3/8	59 5/16	20 3/8	16 3/8	2	22	33	8	2 7/16	50 1/2	8 13/16	3	7 7/8	18 7/16	524	933
284T	25	1800	901773	17 7/8	61	20 3/8	16 3/8	2	22	33	8	2 7/16	50 1/2	8 13/16	3	7 7/8	18 7/16	528	1103
286T	30	1800	901773	17 7/8	62 7/16	20 3/8	16 3/8	2	22	33	8	2 7/16	50 1/2	8 13/16	3	7 7/8	18 7/16	528	1155