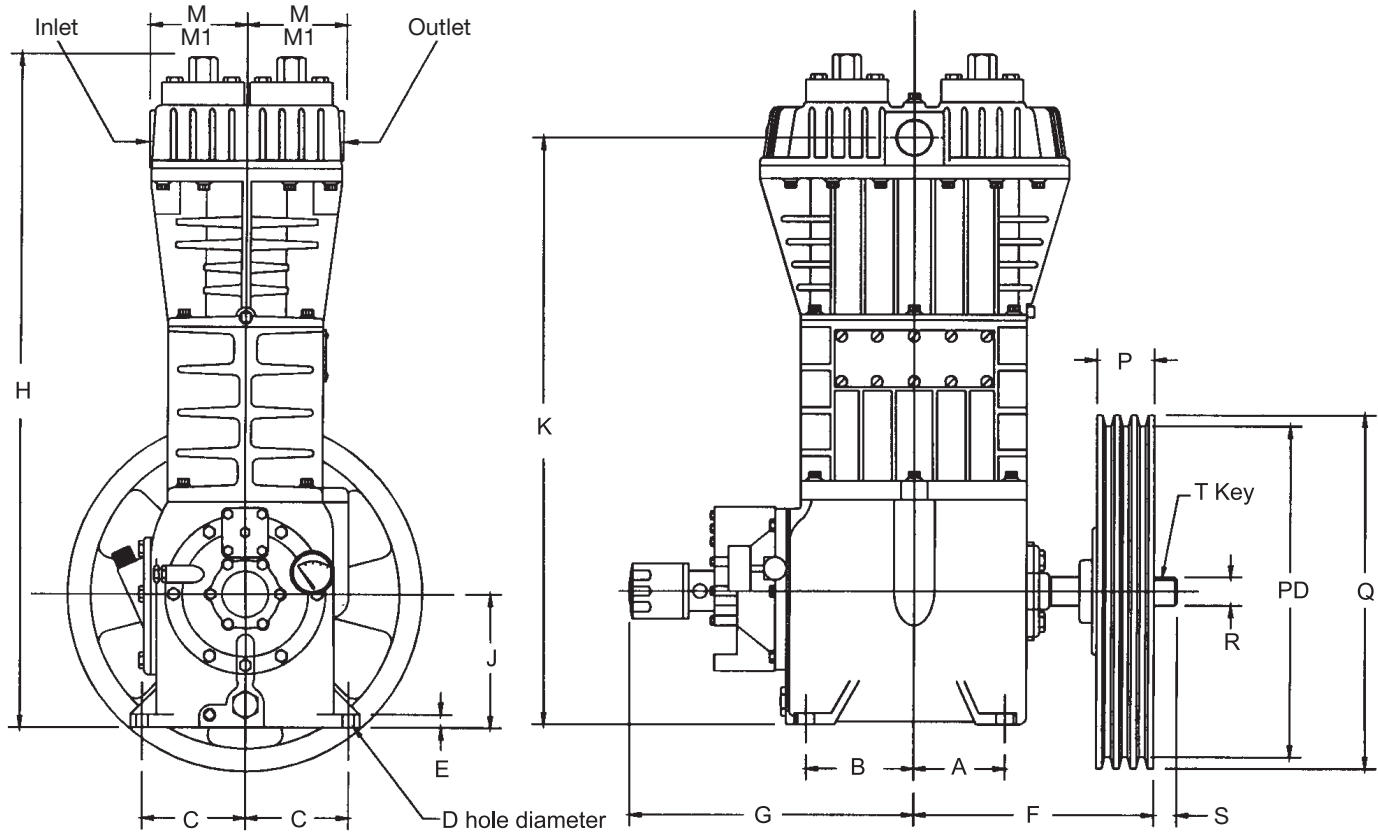


Appendix D—Outline Dimensions

Models 91–691 and F91–F691 Bare with Flywheel



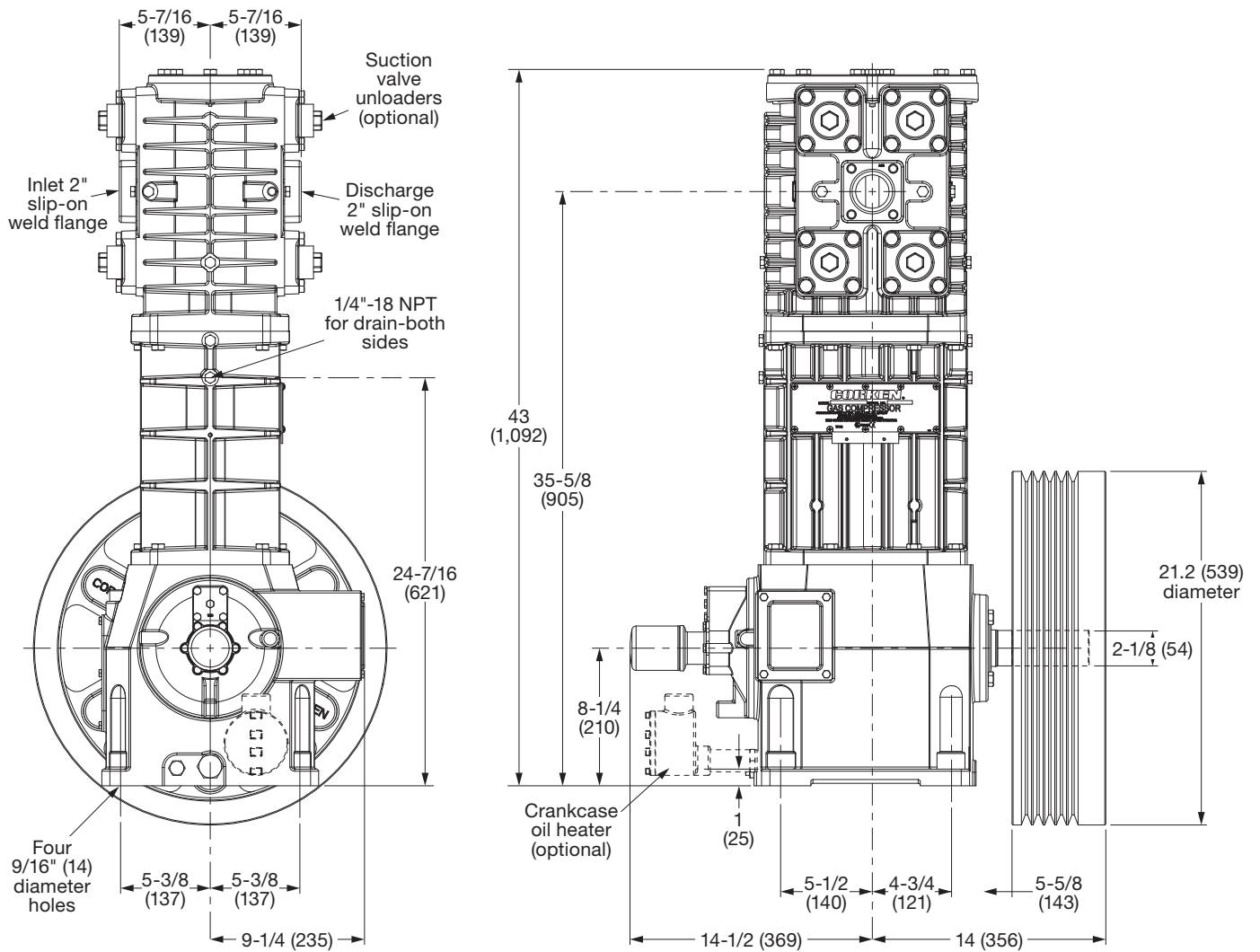
Model	A	B	C	D	E	F	G	H	J	K
91, F91	1-13/16 (46.0)	2-3/8 (60.3)	3-11/16 (93.7)	13/32 (10.3)	5/8 (15.9)	6-1/4 (158.8)	3-7/8 (98.4)	25-5/16 (642.9)	5 (127.0)	22-11/16 (576.3)
291, F291	3-3/8 (85.7)	4-1/8 (104.8)	3-11/16 (93.7)	7/16 (11.1)	25/32 (19.8)	9-13/16 (249.2)	12-1/16 (306.4)	25-11/16 (652.5)	5-3/8 (136.5)	23-3/8 (593.7)
491, F491	4-1/8 (104.8)	5 (127.0)	4-11/16 (119.1)	1/2 (12.7)	11/16 (17.5)	10-11/16 (271.5)	13-3/16 (335.0)	29-5/8 (752.5)	5-7/8 (149.2)	26-3/16 (665.2)
691, F691	4-3/4 (120.7)	5-1/2 (139.7)	5-3/8 (136.5)	9/16 (14.3)	1 (25.4)	14-1/2 (368.3)	14-3/8 (365.1)	39-1/8 (993.8)	8-1/4 (209.6)	35-1/16 (890.6)

Model	M*	M1**	P	Q	R	S***	T	A-belt	Groove	B-belt	Groove
91, F91	2-3/8 (60.3)	4-1/4 (108.0)	3 (76.2)	14 (355.6)	1-1/8 (28.6)	1-1/4 (31.8)	1/4 (6.4)	13.2 (335.3)	2	13.6 (345.4)	2
291, F291	2-5/8 (66.7)	4-1/4 (108.0)	3 (76.2)	16 (406.4)	1-1/4 (31.8)	1-1/4 (31.8)	1/4 (6.4)	15.2 (386.1)	3	15.6 (396.2)	3
				141 (3,581.4)				13.21 (335.5)	2	13.61 (345.7)	2
491, F491	3-7/8 (98.4)	5-5/8 (142.9)	3 (76.2)	16 (406.4)	1-3/8 (34.9)	1-1/4 (31.8)	5/16 (7.9)	15.2 (386.1)	3	15.6 (396.2)	3
				141 (3,581.4)				13.21 (335.5)	2	13.61 (345.7)	2
691, F691	6-5/16 (160.3)	6-15/16 (176.2)	3-13/16 (96.8)	19-1/2 (495.3)	2-1/8 (54.0)	—	1/2 (12.7)	—	—	19-1/8 (485.8)	4

All dimensions are in inches (millimeters).

Appendix D—Outline Dimensions

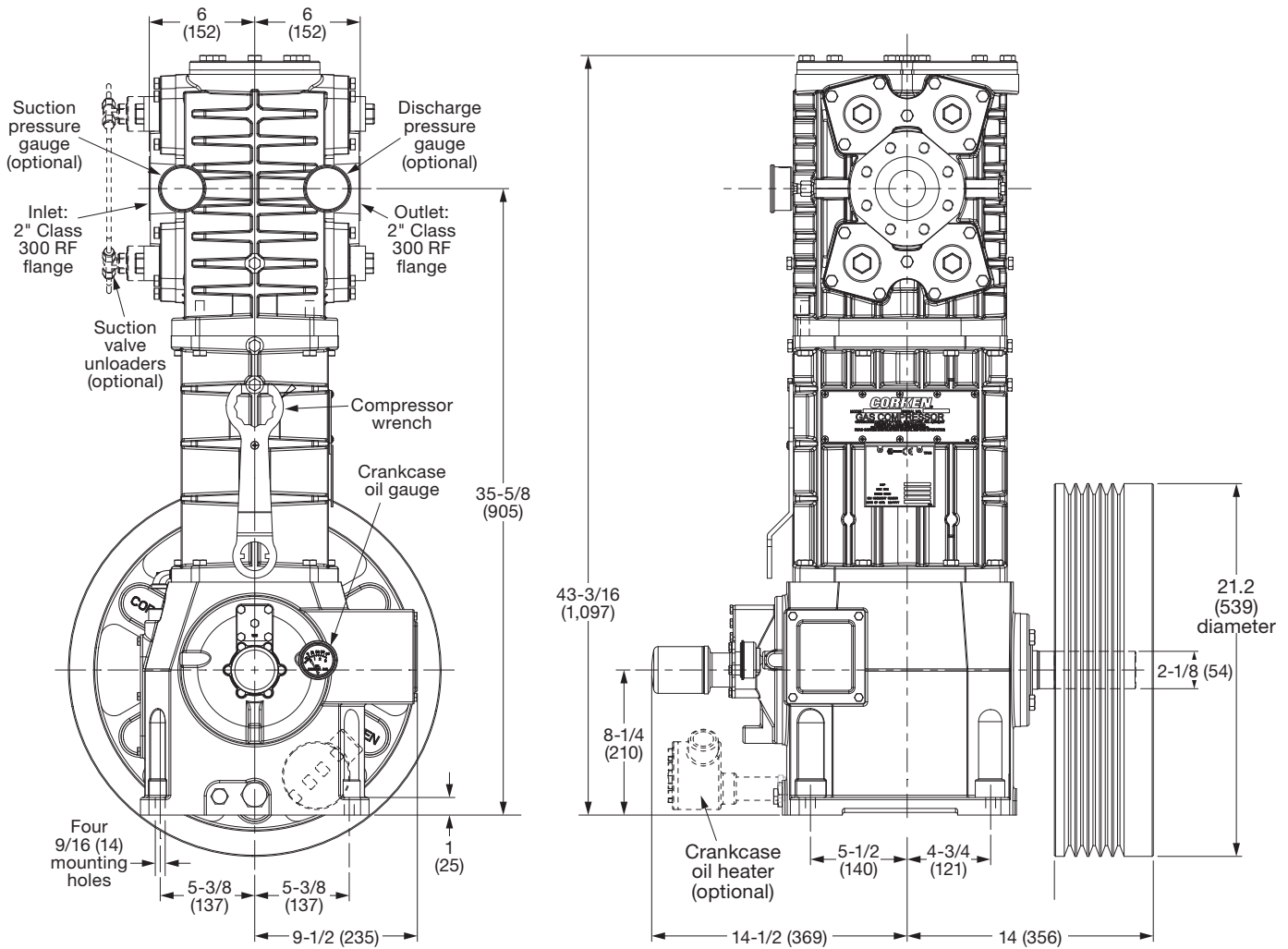
Model D891 Bare with Flywheel



All dimensions are in inches (millimeters).

Appendix D—Outline Dimensions

Model FD891 Bare with Flywheel



All dimensions are in inches (millimeters).